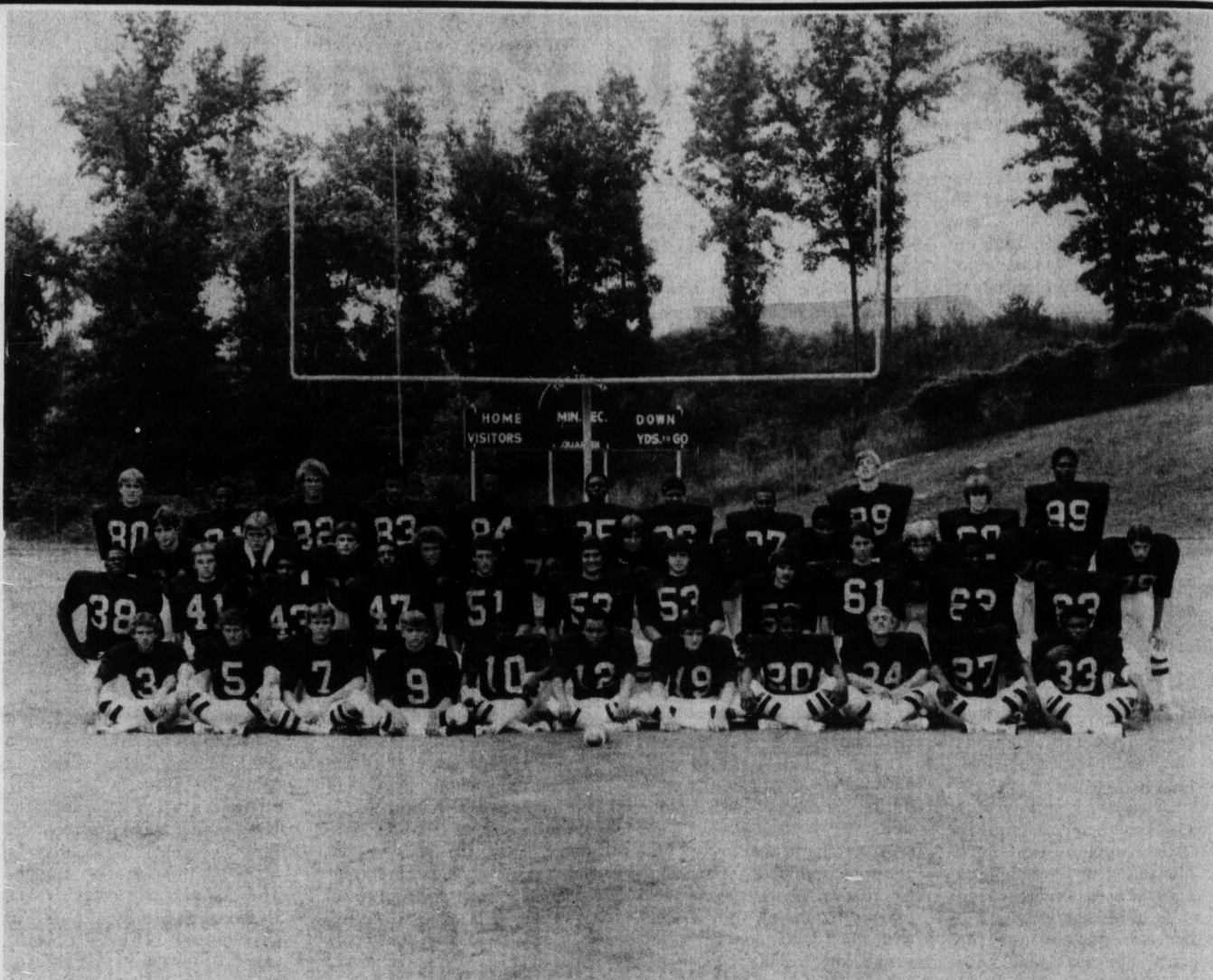


NO.	NAME	POS.	HEIGHT	WEIGHT
3	Mike Woodberry	QB	5'10"	143
5	Jeff Lineberger	R	5'9"	150
7	Trent Hullender	QB	5'11"	150
9	Eric Spicer	QB	5'8"	141
10	Doug Wright	B	5'6"	133
12	Tony Boyce	B	5'8"	164
19	Johnny Bolton	R	5'9"	137
20	Larry Wilson	B	5'9"	155
24	Terry Chapman	B	5'6"	129
27	Tony Rainey	R	5'10"	144
33	Chris Wright	B	5'10"	184
38	Calvin Hood	B	5'11"	177
41	Boo Robinson	R	5'8"	147
43	Todd Bell	B	5'6"	148
47	Max Brooks	B	5'10"	167
51	David Turner	L	6'	168
52	Mark Scruggs	L	5'11"	186
53	Trent Thomasson	L	5'9"	176
57	Mike Donald	L	5'9"	158
61	Mark E. Smith	L	6'1"	176
62	Keith Pressley	L	5'10"	215
63	Dana Camp	L	5'6"	178
64	James Rikard	L	5'9"	165
65	Mark Russell	L	6'1"	168
66	Tommy Eubanks	L	5'9"	171
67	Cam Stewart	L	5'10"	186
72	Daryl Strong	L	6'2"	230
73	Jim Bumgardner	L	5'8"	128
74	Rupert Stephens	L	5'8"	173
75	Carlos Owens	L	6'	196
76	Gary Allen	L	5'10"	193
78	Tony Gordon	L	5'11"	168
79	Richard Ellison	L	6'	163
80	Dexter Tate	R	6'1"	146
81	Terry Feaster	R	5'9"	133
82	David Bolin	R	6'2"	153
83	Mark F. Smith	R	6'1"	154
84	Tony Brown	R	6'	150
85	John Barnette	R	5'10"	152
86	Travis Bell	R	5'9"	137
87	Dennis Jones	R	5'6"	133
89	Wally Davis	R	6'3"	180
90	Barry Lowrance	R	5'7"	129
99	Markus Hager	R	6'3"	185

Managers: Terry Moore  
Maurice Young

Coaches: Dan Brooks  
David Brinkley  
Steve Foster  
Bob Jones



**VARSITY MOUNTIES** - Here's the 1980 edition of the Kings Mountain Mountaineers. They open Southwestern 3-A Conference play Friday at 8 p.m. at John Gamble Stadium against Burns. Front row, left to right, Mike Woodberry, Jeff Lineberger, Trent Hullender, Eric Spicer, Doug Wright, Tony Boyce, Johnny Bolton, Larry Wilson, Terry Chapman, Tony Rainey and Chris Wright. Second row, Calvin Hood, Boo Robinson, Todd Bell, Max Brooks, David Turner, Mark Scruggs, Trent Thomasson,

Mike Donald, Mark E. Smith, Keith Pressley, Dana Camp. Third row, James Rikard, Mark Russell, Todd Weaver, Cam Stewart, Daryl Strong, Jim Bumgardner, Rupert Stephens, Carlos Owens, Gary Allen, Tony Gordon, Richard Ellison. Back row, Dexter Tate, Terry Feaster, David Bolin, Mark F. Smith, Tony Brown, John Barnette, Travis Bell, Dennis Jones, Wally Davis, Barry Lowrance and Markus Hager.

# Mounties Polishing Up For SWC Opener

## SPORTS

Kings Mountain's Mountaineers have a lot of polishing work to do in the next three days to get ready for their 1980 football opener here Friday against Burns.

Coach Dan Brooks is almost settled on a starting lineup. Unlike last year, when the Mounties two-platooned, many players will be starting both ways.

"We found out in our scrimmage at Northwestern last week that a bunch of players aren't ready to play," said Brooks. "We're going to start the other guys who have some experience and work the younger ones in as they get better."

Brooks said the Mountaineers were inconsistent in all phases of the game at Rock Hill. With tough games at the beginning of the schedule, the Mountaineer mentor said he can't afford to develop players in games.

"We don't have non-conference games to get them ready," he said. "We'll let them come in for breathers."

"We did some good things in the scrimmage but we were real inconsistent," he went on. "We

would make a real big play and then turn right around and give up a big one.

"Northwestern was real strong," he continued. "They've really improved over last year. They had 70 people on their varsity and two-platooned all the way."

Brooks said the Mounties this week will spend a lot of time on timing, pass protection and the kicking game.

"We're also working a lot on conditioning," he said. "We'll have to be in much better shape to play people both ways."

The Mounties' starting backfield Friday will include Mike Woodberry at quarterback, Chris Wright at fullback, Tony Boyce at tailback and Boo Robinson at flanker. All are lettermen.

Up front, the Mounties will have Mark Scruggs at center, Mark Russell or Rupert

Stephens at strong guard, Daryl Strong at strong tackle and Markus Hager at tight end. Mark E. Smith will start at quick guard, Wally Davis at quick tackle and Jeff Lineberger or Mark F. Smith at split end.

Brooks said Dougy Wright, out for varsity ball for the first time, will get in a lot of playing time at tailback.

"He's really been impressive the last two weeks," said Brooks. "He did a good job in the scrimmage and since we came back, he's really hustled."

Lineberger will also see some action at tailback, Brooks said.

Carlos Owens will start at nose guard on defense, with Strong at one tackle and either Gary Allen or Keith Pressley at the other. Davis and Mark F. Smith will start at the ends, and Trent Hullender will see a lot of action there. Calvin Hood will start at one linebacker and either

Scruggs or Russell at the other. Chris Wright will also play a lot there.

In the backfield, Boyce and Tony Rainey will play the corners and Hager and Lineberger will be at the safety positions.

Friday's opener will be one which will provide a lot of action. Burns returns its players from a year ago, when the Bulldogs upset the Mounties 16-6.

The Bulldogs, according to Brooks, has one of the best quarterback-split end combinations in the conference in quarterback Al Floyd and end Marion Crowe. They are experienced at the running back positions with 225-pound fullback Frank Porter and tailback Tim Key returning for their senior year.

"If we stop the big fullback and do a good job in the secondary, and have some consistency on offense, we'll be alright," said Brooks.

### Youth Soccer Meet Planned

The Parks and Recreation Department is hosting an organizational soccer meeting to be held at the Kings Mountain Neighborhood Facility Center (Community Center), on Thursday, September 11, 1980, at 7:30 p.m. in room number 3, lower level.

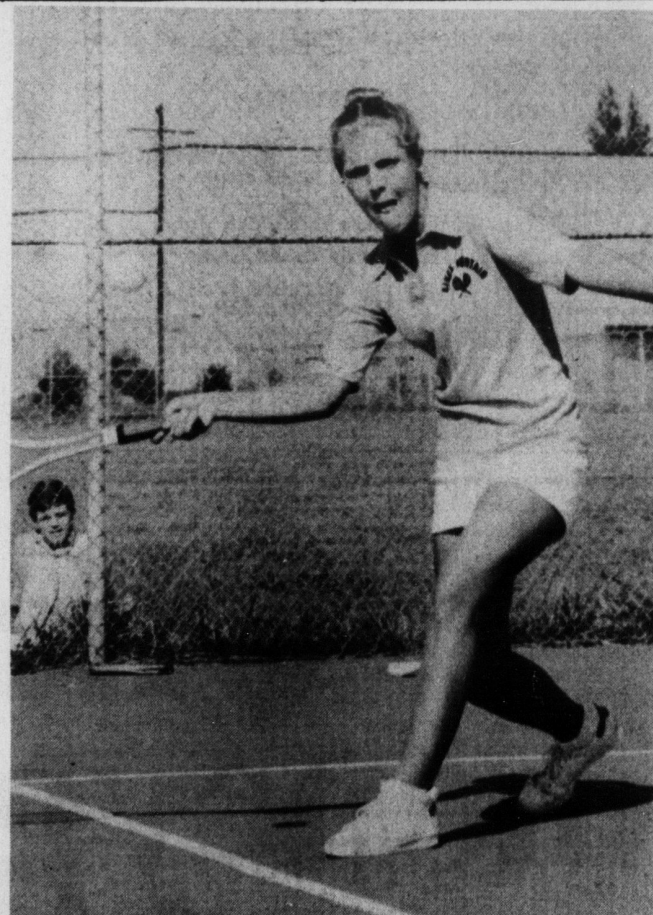
"Soccer, is being played by our youth (boys and girls), all over the country and on both sides of Kings Mountain. It's time to get soccer here in our community," said supervisor Mike Nappi.

All parents, volunteer coaches and persons interested in soccer are encouraged to attend this meeting. Tentatively a rules film is being planned along with a discussion from Belmont Abbey Soccer Coach Jack Murphy.

For more information concerning the meeting or future programs call 739-6995.

### KIWANIS MEETING

Thursday's meeting of the Kings Mountain Kiwanis Club will feature an address by John Breaner, who has been in Washington State at the site of the Mt. St. Helens volcano and will present his impressions. The meeting is at 6:45 p.m. at the Woman's Club.



**TOP RETURNEE** - Senior Bridget Glass is one of four returning starters for the Kings Mountain High girls tennis team, which opens 1980 play Thursday at Hunter Huss. Veteran Coach Ed Guy is expecting one of his better teams.

## KMHS Girls Netters Expect A Good Season

Kings Mountain High's girls tennis team opens what promises to be one of its better seasons Thursday at Phillips Center in Gastonia against 4-A Hunter Huss.

Veteran Coach Ed Guy has four starters returning off last year's team, which tied the school record for victories with an 11-3 mark.

After those four, the Mountaineers are inexperienced but Guy hopes they'll be ready to play when Southwestern 3-A Conference action rolls around in late September.

"I've been real pleased with the four girls who played last year," he said. "They're really going to be ready. The others have to work more on their consistency."

The four returnees are Bridget Glass, Ronda Guy, Jamie Humphries and Kim Moss, all seniors. Guy expects them to occupy the top four singles positions, but not necessarily in that order.

"We started playing off for positions Monday," he said. "We haven't worked on our doubles combinations yet. We'll probably work on different combinations in the non-conference matches."

Guy has two girls returning who did not start last year, junior Wanda Witherspoon and sophomore Karen Ledford. Suzanne Thornburg, a senior transfer from Lenoir, will be battling those two for the final two starting spots.

Newcomers include Heather Crowley, Robin Ramsey, Angela Barrett, Sandra Cobb, Martha Alexander, Pam Crawford, Susan Crawford and Christy King.

"The first of the season, we'll depend on our experienced girls," said Guy. "As the season goes on, we'll depend on the others to get their games together."

The outlook for the SWC season appears the same as past years, with Kings Mountain battling perennial champion Shelby for the championship.

"It'll all depend on what kind of help Shelby gets from their junior high," said Guy. "They lost some good players. We lost to them 5-4 the past two seasons. With our experience, we should have a real good chance. Everyone else will be a distant second to Shelby and Kings Mountain."



**VARSITY COACHES** - Kings Mountain High's varsity coaching staff is pictured above. From left, head coach Dan Brooks, David Brinkley, Bob Jones and Steve Foster.

The Mounties open Southwestern 3-A Conference play at home Friday night against Burns.