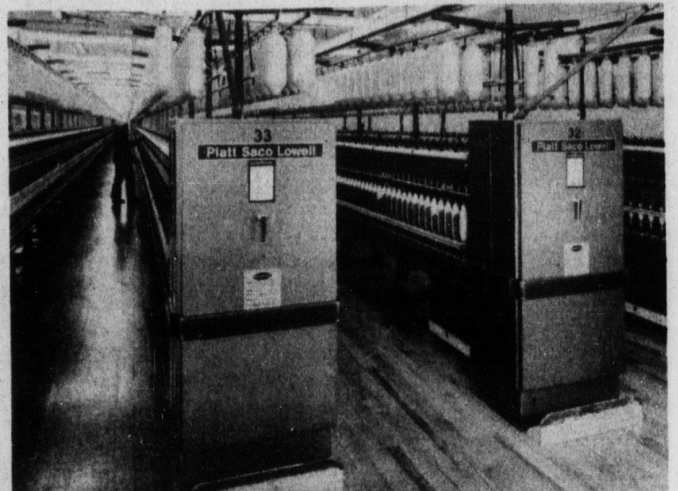
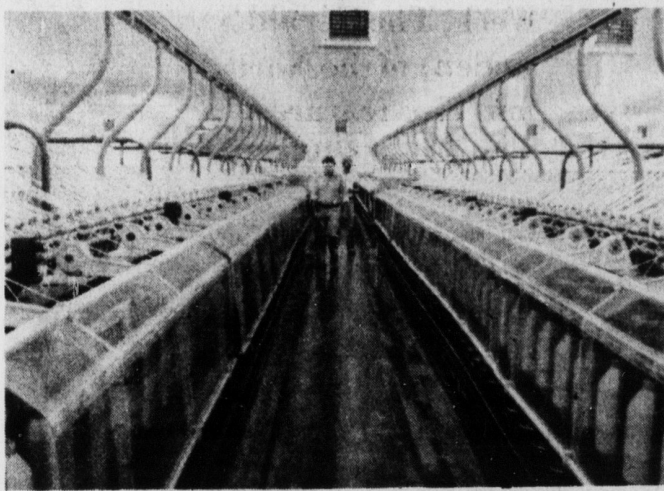


PARKDALE MILLS, INC.

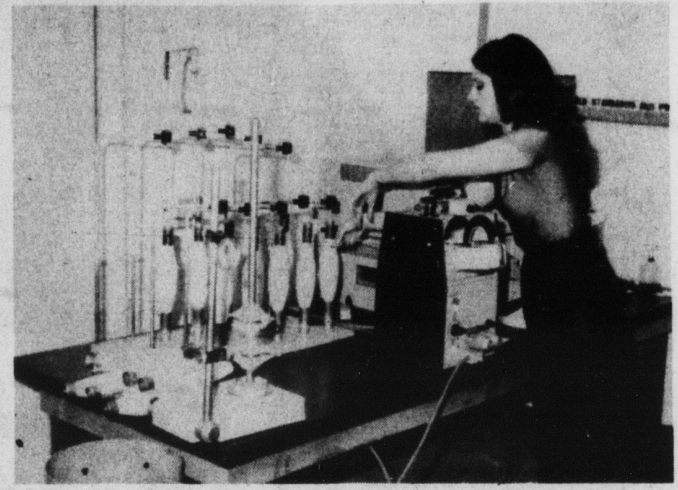
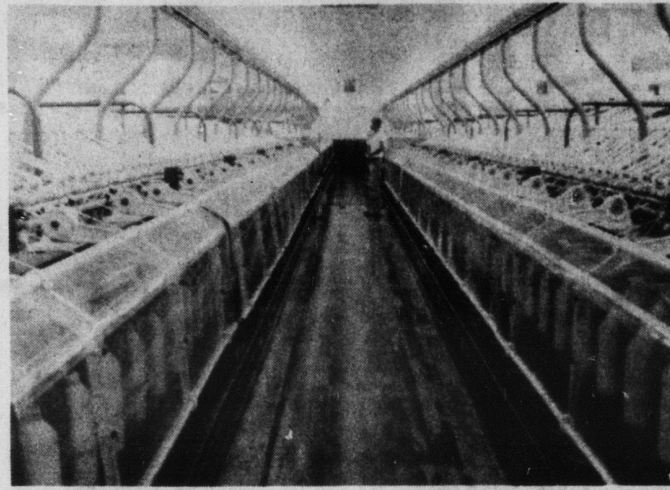
—PEOPLE—



"OUR PEOPLE, PRODUCTION EMPLOYEES and MANAGEMENT MAKE IT HAPPEN," says President, W. Duke Kimbrell. The fine spirit of cooperation and team work of our people has been a major factor in the success of Parkdale Mills. We

recognize that our dedicated employees are Parkdale's greatest asset to the communities in which they live. Many of our employees devote much of their time and energy to their churches, schools, civic and community activities.

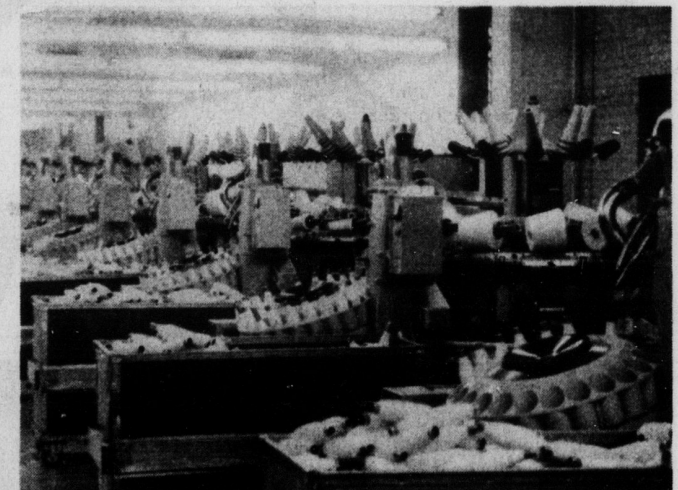
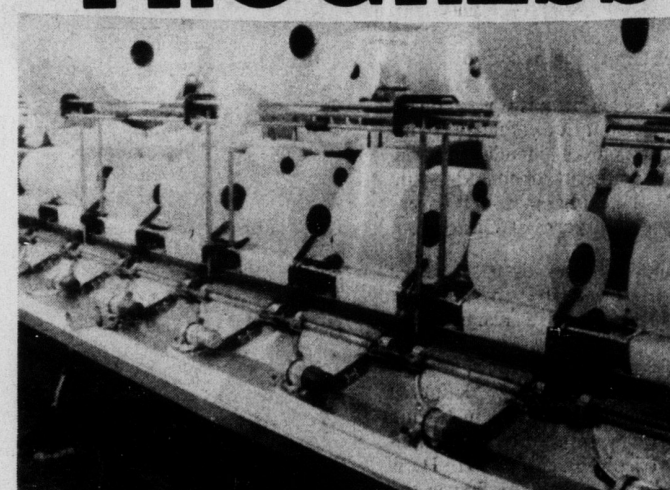
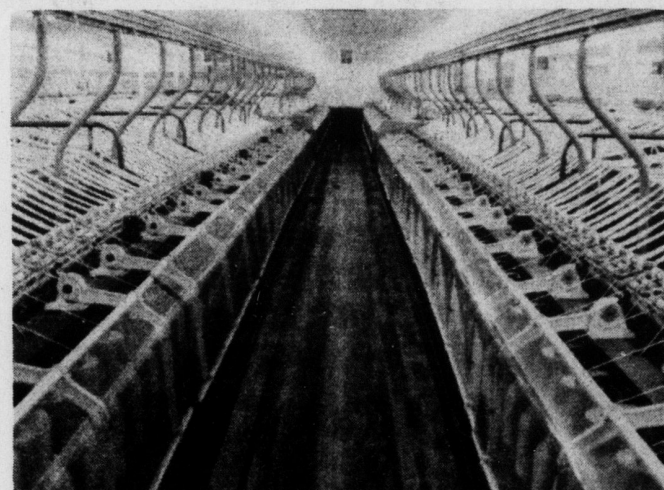
—PRIDE—



At Parkdale Mills, its people and Management take great pride in the production of the finest sales yarn produced for the knitting industry. From Roving produced in the Carding Department to the final process of winding, our products are carefully inspected. These inspections are conducted to in-

sure that the highest possible quality yarns are being produced. One section of the testing process is the Physical Testing Laboratory where a constant check is maintained on in process stock using the most modern testing equipment.

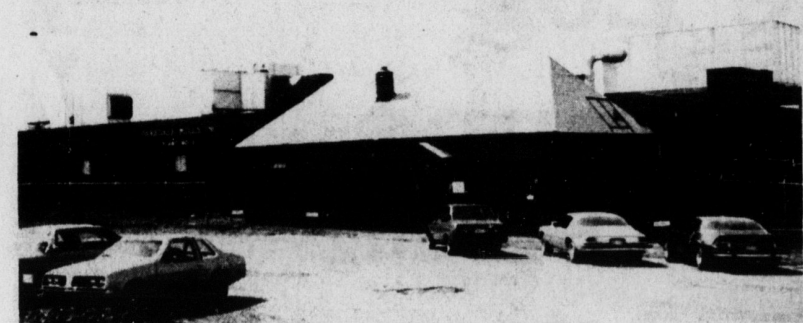
—PROGRESS—



In keeping up with the demands of a changing market place, modernization has been the key word at Parkdale Mills. From computers, machinery, equipment, buildings and the facilities therein, Parkdale constantly strives to keep the latest machinery and equipment in all its plants. Not only does the new machinery and equipment produce

more and better yarns, it helps Parkdale Mills to comply with Governmental regulations regarding the cotton dust and noise standards. Parkdale Mills has recognized that "The only thing permanent is change" and we are ready and willing to meet the challenges of the future.

—PARKDALE MILLS, INC.—



Incorporated in Gastonia, N.C. in 1916. Construction and installation of machinery were completed in 1918. The plant began with the production of 18,000 pounds of Thread Yarn per week.

Today there are two plants in Gastonia, one in Kings Mountain, two in Lexington, N.C. and one in Thomasville, N.C., our latest addition. These six plants employ some 1600 people and produce 72 million pounds of cotton and poly-cotton yarns per year.

Parkdale faces the future with the optimistic view that we will continue to prosper and grow along with our employees.

W. Duke Kimbrell, President
Artie Newcomb, V.P., sales

Ken Pruitt, V.P., Manufacturing
Don Stewart, Comptroller

Bernard S. Harvey, Plant Manager

PARKDALE MILLS, INC.

500 Railroad Avenue, Kings Mountain—Mill No. 5

"A GOOD PLACE TO WORK FOR THE FUTURE"

Equal Opportunity Employer

Phone 739-7411