

KMHS Volleyball Team Loses

Kings Mountain High's girls volleyball team dropped a pair of matches to East Gaston and South Point in Southwestern 3-A Conference action at the KMHS gym Monday.

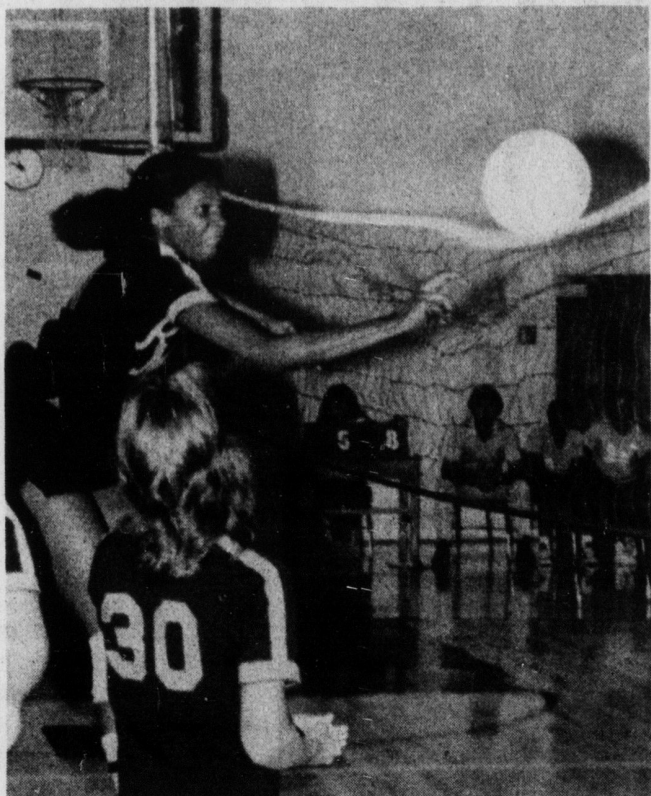
The Mountaintettes fell to East Gaston, the SWC co-leader with North Gaston, 15-10 and 15-6, and lost to South Point 15-13 and 15-5.

Coach Kathy Brooks cited Diane Williams, Mary Ann White and Sheryl Goode for their overall play.

"They worked well together," she said. "They did a good job of setting the ball up and controlling it."

"Williams had a real good serving game against South Point," Brooks went on. "We played a more controlled game against them, but violations hurt us. We played better team-wise...much better than the score indicated. We just got a couple bad breaks."

The Mountaintettes, 2-6, were scheduled to face East Rutherford and North Gaston yesterday at North. They travel to Shelby Monday to play Shelby and Chase.



BALANCING ACT - The volleyball appears to be balanced on top of the net as Kings Mountain High's Sheryl Goode tries for a spike in a recent match at KMHS. The Mountaintettes dropped a pair of matches to East Gaston and South Point in Southwestern 3-A Conference action Monday.



PAM BOLTON

Pam Bolton Cheerleader For Bobcats

Banner Elk, N.C.—Pamela Bolton now wears the green and gold of the Lees-McRae College cheerleading squad. Pamela is a freshman and was elected to the squad this fall.

Many a close victory has been sparked by the enthusiasms of the fans, led of course, by the cheerleaders. The Bobcat cheerleaders have, more than ever, promoted school spirit among both athletes and fans.

Pamela is the daughter of Mr. and Mrs. Jimmie Bolton of Kings Mountain.

Applications Are Available

The Parks and Recreation Department has applications for the October 12 2nd Annual Erwin Denim Days Annual Road Race. Race headquarters is Erwin Municipal Park and the telephone number is (919) 897-7026. Pre-race information and registration available at the Erwin Municipal Park or Erwin Town Hall. Packet pick-up and registration is at Municipal Park until 2:30 Sunday. All starting lines are within walking or jogging distance of the park.

All races will start at 3:00 p.m. and begin and end at the Erwin Municipal Park. Mile signs, split times and water stations will be available. Racers will cross a common finish line and be handed a place card and then proceed into age group chutes for scoring. Plenty of water, food and entertainment will be available at the park. Awards ceremony will be at the park at 4:30 p.m.

One mile run for fun will begin at 3:00 p.m. and the 6.2 mile run will also begin at 3:00 p.m. T-shirts are \$3.50 adults, \$2.50 under 18. The age groups are Men & Women, 12 & under, 13-17, 18-29, 30-39, 40-49, 50-59, 60 plus. Age group awards to the first 3 men and women in 6.2 mile race. Also, industrial and team awards. All entries limited to the first 500.

For an application form, stop by the Parks and Recreation Department in Kings Mountain, New City Hall. For information, call 739-6995.

HERE NOW

The New 1981

FORDS

See Them

At

WADE FORD INC

KINGS MOUNTAIN PHONE 739-4743

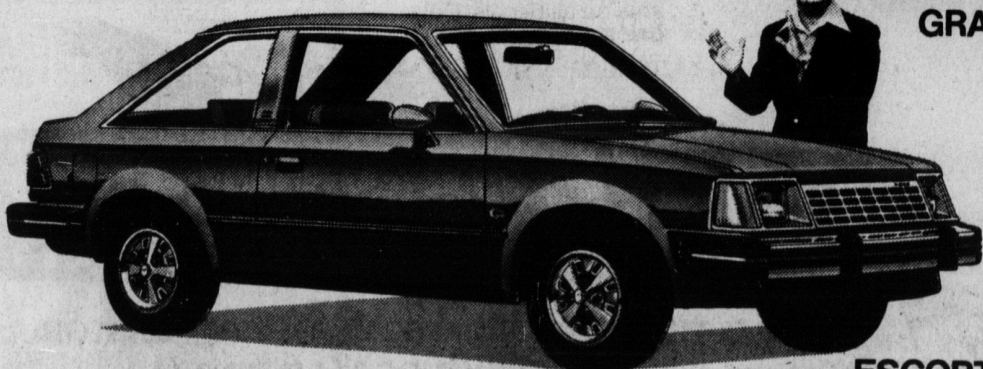
"You're Invited!"

Your Local Ford Dealer
Cordially Invites You
To See The Complete Line
Of 1981 FORDS,
Starting October 3rd.

"You're gonna love the Escort, Ford's new world car. And the all-new Granada will flat out amaze you."



GRANADA



ESCORT

