



INDUCTEES - Pictured above are Kings Mountain students who were recently inducted into Cleveland Tech's chapter of the Gamma Beta Phi Society. Left to right, David Putnam, Loretta Eller, Doris Pruitt, Becky Morrow, Doug Burch and Sarah Dixon.

Fall Induction Held

The Fall Induction of new members of Cleveland Technical College's Chapter of the Gamma Beta Phi Society was held Sunday, November 16, at 3 p.m. at the Cleveland County Office Building.

The 28 inducted into Tech's honor society were selected because each had a 3.50 (B plus) or above average on 15 or more quarter hours.

Invited guests go the induction service were the families of

the honor students, Trustees, and Tech's faculty and staff. Refreshments were served following the program.

Oliver J. Davis, North Carolina State Director of the Gamma Beta Phi Society, was the guest speaker.

Tony Ivey, President of Tech's honor society and North Carolina State President, presided at the service and conducted the induction of the new in-

itiate. Dr. Alvin M. Sherlin, Tech's Vice President, presented the credentials. Dr. Noel R. Lykins, Vice President for Student Services, lead the invocation and pronounced the benediction. Mrs. Sandra W. Hardin, Tech's Associate Dean of Instruction, introduced the speaker. Bobby Phillips, Vice President of Tech's Chapter of Gamma Beta Phi, made the announcements and recognized special guests.

The honor students inducted include:

Shelby - Catherine Anne Bartley; Dianne B. Carter; Barbara Dawkins; Cathy E. Farnham; James Douglas Hambricht; Paul K. Hipps; Robin Lynn Huffstetler; Angela R. Jeter; Margaret A. Kimbrell; Barbara E. London; David William Lovelace; Carl Owen McWhirter, Jr.; Vickie D. Queen; Cynthia Marie Oliver; Sherry H. Trammell; Frances R. Wilson.

Kings Mountain - Douglas L. Burch; Loretta M. Eller; Becky Morrow; David H. Putnam; Doris Pruitt.

Cherryville - Lawrence McGinnis; Regina Baynard. Lawndale - Arnold Steve Boyles.

Casar - Cynthia Lee Carpenter Grover - Kim Sapoch
Lincolnton - Kathy H. Avery
Boiling Springs - John E. Hunt
Officers for 1980-81 are Tony Ivey, President; Bobby Phillips, Vice President; Sue Elliott, Secretary; Donna Huskey, Treasurer; Lisa Yarboro, Reporter; and Kay Dyer, Historian.

Advisors are Hugh Walker and Barbara Taylor.

Former Citizen Writes

A former Kings Mountain resident has written a book on successful techniques for investing in stocks and bonds.

James E. Castle, retired mining engineer, former resident of Kings Mountain and former manager of the Foote Mineral Co., has written a book entitled "How to Invest in Stocks and Bonds with Profit, Poise and Equanimity".

Far from being a dust-dry compendium of dull statistics and overwhelming numbers, the book, instead, starts with an account of the author's 1930's depression-years experiences and vicissitudes in the Silver mining business in the Rocky Mountains. This was written primarily from the point of view of financial-entrepreneurial factors, but includes a nostalgic account of life in an isolated mountain mining camp.

There follows the author's early experience in investing with

results uniformly haphazard, sometimes astonishing, sometimes hilarious. All of this was done in spite of expert training and admonitions by veteran investors and mentors.

The book closes with the author's exposition of his recommended investment technique based upon mutual funds and a four-year economic cycle. A short section is devoted to basic technical analysis of stock market indices, and to considerations of inflation and the true rate of return on investments.

Throughout the book the narrative quality is consistently favored over the stultifying presentation of numbers and charts. The current results being obtained by the recommended techniques are excellent.

The book is available from the author, James E. Castle, P.O. Box 26, York, S.C. 29745, for \$4.50 prepaid and postpaid.

KM Schools Menus

GRADES K-5

Dec. 2: Pinto Beans, Cheese Wedge, Cole Slaw, Corn on Cob, Cornbread, Milk.

Dec. 3: Fried Chicken, Rice/Gravy, Green Beans, Chilled Fruit Cup, Roll, Milk.

Dec. 4: Fish Sticks, Cheese Wedge, Lima Beans, Applesauce, Whole Wheat Roll, Milk.

Dec. 5: Pizza, Tossed Salad, Fresh Pear, Milk.

Dec. 8: Sloppy Joe, Cheese Wedge, Cole Slaw, Corn, Vanilla Cookie.

Dec. 9: Cream of Tomato Soup, Peanut Butter Sandwich, Fresh Apple, Milk.

Dec. 10: Turkey A La King, Rice, Lima Beans, Tossed Salad, Roll, Milk.

Dec. 11: Spaghetti, Tossed Salad, Peach Half, French Bread, Milk.

Dec. 12: Great Northern Beans, Cheese Wedge, Cole Slaw, Peach Cobbler, Cornbread of Roll, Milk.

Dec. 15-19: Manager's Choice.

GRADES 6-12

Dec. 2: Vegetable Beef Soup, Grilled Cheese Sandwich, Fresh Apple, Milk.

Dec. 3: Pizza or Hot Dog, Tossed Salad, Fresh Apple, Milk.

Dec. 4: Pinto Beans or Fish, Cole Slaw, Potato Tots, Corn Muffins, Milk.

Dec. 5: Fried Chicken or Sloppy Joe w/cheese, Potato Salad,

Green Beans, Whole Wheat Roll, Milk.

Dec. 8: Chicken Pot Pie, Hamburger w/Chili, Cole Slaw, French Fries, Applesauce, Roll, Milk.

Dec. 9: Submarine Sandwich or Fried Chicken, Potato Salad, Green Beans, Peanut Butter Pudding, Roll, Milk.

Dec. 10: Meat Loaf or Fish Sandwich, French Fries, Garden Peas, Roll, Milk.

Dec. 11: Lasagna or Toasted Cheese Sandwich, Tossed Salad, Corn on Cob, French Bread, Cinnamon Crispie, Milk.

Dec. 12: Footlong Hot Dog, Tater Tots, Cole Slaw, Corn on Cob, Milk.

Dec. 15-19: Manager's Choice.



GASTON COLLEGE

WINTER QUARTER

December 8, 1980 - February 27, 1981

Registration

Thursday, December 4, 1980

8:30 a.m.-1:30 p.m. & 3:30 p.m.-7:30 p.m.

MYERS CENTER

ACADEMIC • TECHNICAL

VOCATIONAL

Continuing Education
Registration Will Be
Held On December 10

*Approved For Veterans Benefits
*Tuition FREE For Citizens 65 or Over

For More Information, Please Call 922-3136

NOW

INTEREST ON YOUR CHECKING

5 1/4 %

Beginning December 1, 1980, open your NOW Account at First Federal Savings & Loan and be ready to start writing checks against your account on Jan. 1, 1981. NOW Accounts that will allow you to earn 5 1/4 percent interest on your checking account.

ONLY \$400 Minimum Balance

THE BEST OF BOTH-CHECKING AND SAVINGS

To qualify for a NOW account, you simply agree to keep a minimum of \$400 in your account. This \$400 and any additional amount you deposit to your checking account will earn a full 5.25 percent interest. This is the highest rate allowed by law for any Federally insured Savings & Loan association to pay on a NOW Account.

For more information, or to make early application, call 739-4781.

FREE — FREE — FREE
Open Your NOW Account At First Federal Savings & Loan And Receive FREE Your Initial Supply Of Checks.



First Federal

SAVINGS & LOAN ASSOCIATION

Phone 739-4781 300 W. Mtn. St.



Plus Insured Safety

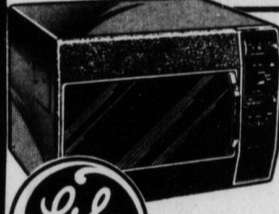
Accounts now insured to \$100,000

General Electric

Appliance

SALE

GENERAL ELECTRIC REFRIGERATORS & MICROWAVE OVENS



GE MICROWAVE OVEN
Save Time, Energy and Money
NOW ONLY

\$299



Frost Free
Optional
Icemaker

TBF-14DA \$469
NOW ONLY

General Electric

WASHERS AND DRYERS



GOOD
Heavy Duty
Washer
\$289

WWA-3100



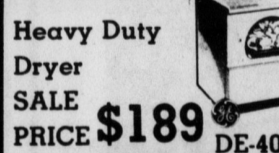
BETTER
Multi-Cycle
Washer ONLY
\$349

WWA-5600



BEST
Deluxe Washer
ONLY
\$369

WWA-8364



Heavy Duty
Dryer
SALE
PRICE **\$189**

DE-4000



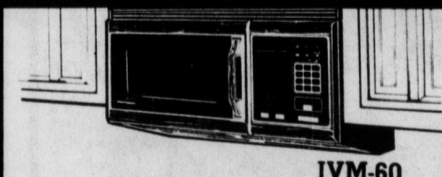
Timed
&
Automatic
Dryer
SALE
PRICE **\$259**

DC-0580



Deluxe
Features
Dryer
SALE
PRICE **\$299**

DE-7108



JVM-60



PACEMAKER

GE Microwave Oven
Simple to install
Replaces 30", 36" or 42" hood
It's easy to make your kitchen look
beautiful
Saves time, energy and money

DURING THIS SALE

SAVE \$100

Factory
Service
Available
On All
Appliances

TIMMS Furniture

909 GROVER ROAD
KINGS MOUNTAIN, N. C. 28086
PHONE 739-5656

Credit
Terms
Available
With
Approved
Credit