

PEPSI-COLA BOTTLING COMPANY

OF SELMA

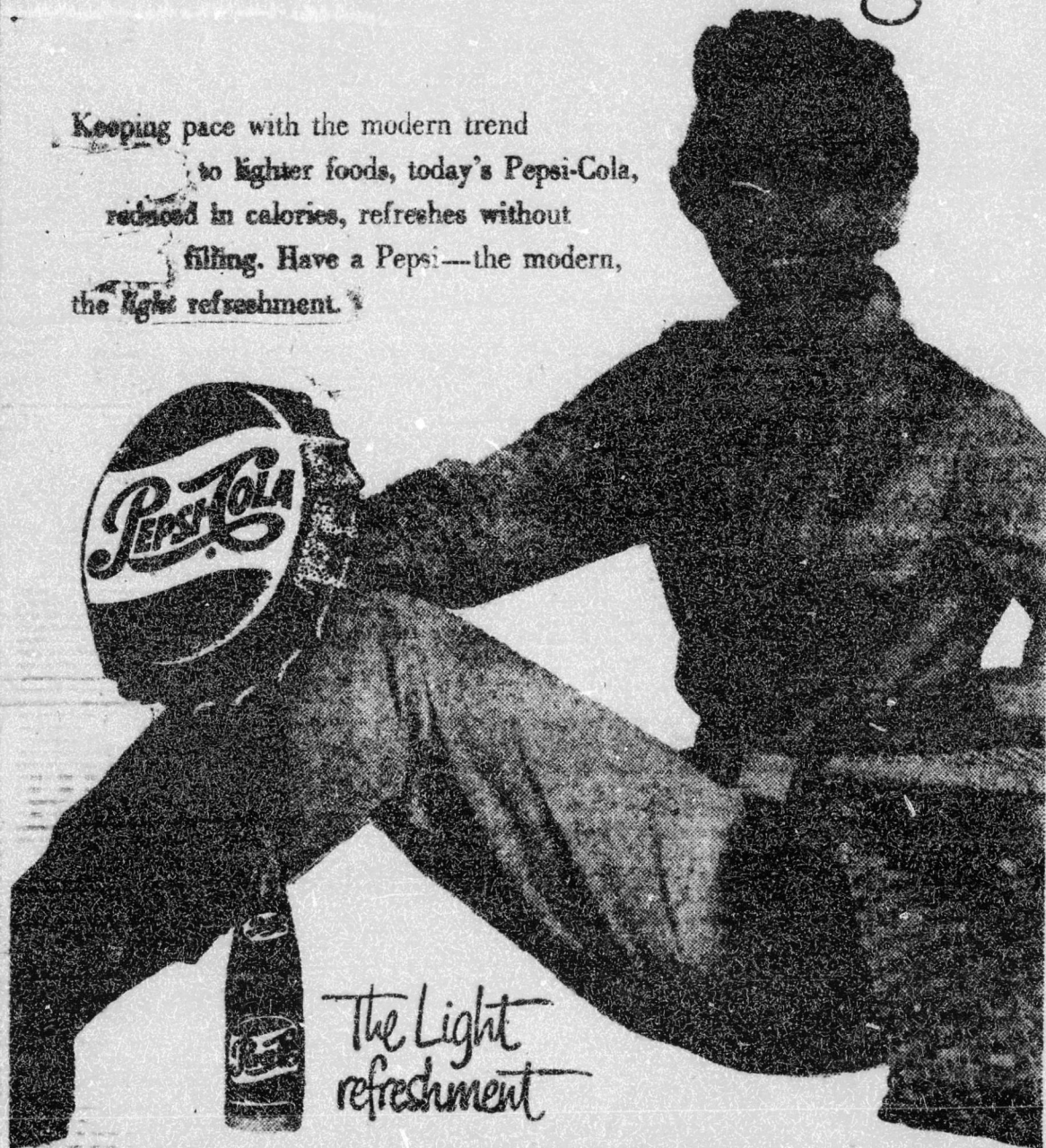
Invites You To The 12th Annual

HAM & EGG SHOW

Get A Free Pepsi-Cola While There And
Enjoy today's fun...

Refresh
without filling

Keeping pace with the modern trend
to lighter foods, today's Pepsi-Cola,
reduced in calories, refreshes without
filling. Have a Pepsi—the modern,
the light refreshment.



THEY CAME CLOSE — Persons receiving honorable mention at last year's Ham and Egg Show, are left to right, Mesdames Della Gratefield, Route 1, Clayton, reserve grand champion eggs; Vera

Atkinson, Four Oaks, champion; Flora Revels Route 2, Selma, reserve. Mrs. Esther Mitchener, grand champion, and Mrs. Lucy O. Toole, home agent for Johnston County, are shown exchanging proud smiles on the right.



IN THE HAM DIVISION — These men were prominent last year at the Ham and Egg Show held in Johnston County. From left are Columbus Richardson, Route 1, Wendell, reserve champion; David Richardson, Route 1, Wendell, champion; David Merritt, Route 1, Wendell, reserve grand champion. The Rev. J. T. Hocutt, grand champion, and L. R. (Ham) Johnson, county agent, are shown on the right.



Welcome
JOHNSTON COUNTY FARMERS
To
SMITHFIELD STARLINGS
YOUR STORE OF FASHION

PATRONIZE
OUR ADVERTISERS

Austin's
Your Men & Boys
Outfitter

Welcomes You To
Smithfield

You Have The Best In
Hams & Eggs
We Have The Best In
Styles And Prices

Mr. & Mrs. Ham & Egg Producer
Check The Values At
ROYAL'S CLEARANCE
SUPER SPECIALS

- LADIES & GIRLS TOPPERS
- LADIES & GIRLS DUSTERS
- LADIES & GIRLS REGULAR SUITS

1 / 2 PRICE

Ladies Better Dresses
Buy One **FREE**
AND
Get One

INSTANT
CREDIT
LONG EASY
TERMS

Ladies Walking Suits
\$14.29 Originally Priced Much Higher

Royal Clothing Co.
GOLDSBORO SMITHFIELD DURHAM ROCKY MOUNT

Visit The...
HAM and EGG SHOW

E. J. Bird's
DEPARTMENT STORE

Of Smithfield

OLD TIME VALUES
Friendly Service

Welcome To
HUDSON-BELK

Home of Better Values

JOHNSTON COUNTY'S
LARGEST DEPARTMENT
STORE

Welcome To
THE 12TH ANNUAL
HAM & EGG SHOW

ROBERTS & WELLONS

Complete Farm Equipment
SMITHFIELD, N. C.

THE
HAM & EGG SHOW
Deserves Your Support

**Heavner - Wallace
Imp. Co.**

Allis - Chalmers Farm Machinery
SMITHFIELD, N. C.

THE FRIENDLY SMITHFIELD MERCHANTS
WELCOME YOU TO THE
12TH ANNUAL SHOW AND SALE
JOHNSTON COUNTY LIVESTOCK ARENA
APRIL 8TH, 9TH AND 10TH

**SMITHFIELD
CHAMBER
OF
COMMERCE**