

tion At Work

Shalom Y'all

By Mildred Lyons

"Each of you can fulfill your role as a Jewish woman or man by getting involved, and together we will ensure a healthy Jewish future." So spoke Rose Luski prophetically on June 29 at an informal gathering at the home of Sara and Michael Schreibman. The occasion was a welcome to newcomers to the Charlotte Jewish community under the auspices of the Shalom Y'All committee of the Women's Division of Charlotte Jewish Federation.

An old fashioned ice cream social took little effort in getting involved with the elaborate caloric choices of ice cream sundaes topped with a colorful array of fruits, creams, chocolate syrups and cakes and cookies. But while the palate was being satisfied, the mind was being informed re the various Jewish agencies and organizations that exist in Charlotte to create an outstanding quality of life for all who care enough to participate.

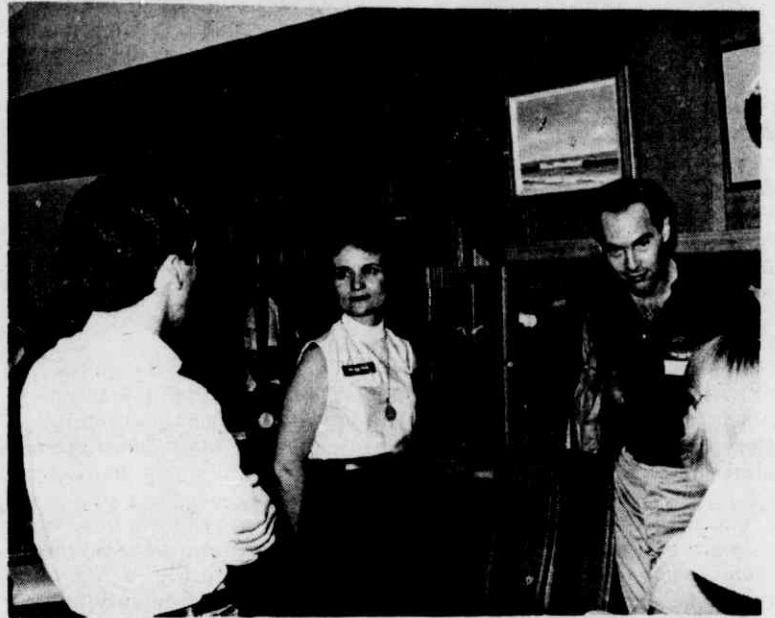
"What is the Women's Division? It is people, you, me, our neighbors, our organizations — all working together voluntarily and sharing responsibilities. It's women who care about Jewish survival, supporting the different activities and programs that educate and share in the needs of fellow Jews." Rose Luski's efforts as cochairwoman of New Gifts served as a reminder that the Federation supports the religious, educational, social and financial needs of the community as well as the community at large and Israel.

Ruth Goldberg, president of the Women's Division, welcomed over a dozen newcomers and introduced immediate past president of the Foundation and past president of the Federation, Herman Blumenthal; Marvin Bienstock, Executive Director of the Federation and Foundation; Gail Bienstock, past president of the Women's Division; Ron Katz, Federation Campaign chairman, Sara Schreibman and Rose Luski, cochairwoman of New Gifts; Sally Schrader and Sharon Sand, cochairwoman of Shalom Y'All; Mildred Lyons, cochairwoman of Publicity; and Cary Bernstein, chairwoman of Young Singles.

Ron Katz spoke on behalf of the Federation and urged all to participate in the many activities that the Federation sponsors in the community. Sally Schrader distributed a new brochure, prepared by Florence Jaffa, which lists the major Jewish organizations in Charlotte and serves to acclimate newcomers to



Sally Schrader, Anita Blumenthal, Ellie and Ron Katz making ice cream sundaes.



From left: Craig Laufer, Rochelle St. Gelais and Jerry Fischer.



Geri and Steve Litt and Anita Blumenthal.



Mike and Shari Simon.



Herman Blumenthal and Sara Schreibman.

the community.

The following newcomers introduced were: Nancy Berkowitz, Mahlon Coplan, Jerry Fischer, Michael Glassman, Trude Hill, Craig Laufer, Geri and Steve Lit, Mildred and Bennett Lyons, Rochelle St. Gelais, Ralph and Nettie Smith, and Lisa and Ted Teitelzweig.

Patronize our Advertisers — And tell them you saw their ad in THE CHARLOTTE JEWISH NEWS!!



NOVA PLAZA CENTER



Featuring the:

RITZ

For The Finest In French Cuisine
Reservations: 567-1010

CLUB  CLUBS

- Open: 4 p.m. - 2 a.m.
- Happy Hour: 4 - 7 p.m. daily
- Live entertainment nightly

For reservations call: 535-8300
Consult with us about your special business meetings/special occasions.

5323 East Independence Boulevard
Charlotte, North Carolina 28212
535-8300 or 567-1010