

Address Correction  
Requested

Non-Profit Organization  
BULK RATE  
U.S. Postage PAID  
Charlotte, N.C.  
Permit No. 1208

The Shalom Y'All brochure inserted in this issue is a New Year's gift from the Federation to the entire Jewish community. The brochure, originally intended for newcomers, we feel will be useful to everyone.

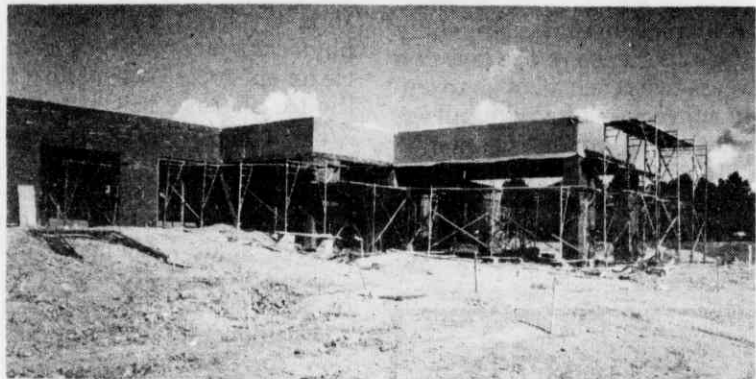
# The Charlotte JEWISH NEWS

Vol. 7 No. 8

Charlotte, North Carolina

September, 1985

## Buildings Named After Benefactors



Entrance to the Blumenthal Jewish Educational Building.

In a dramatic move honoring the two benefactors whose donations of \$1 million dollars each have brought the Foundation in sight of completion, the two halves of the Shalom Park Phase I facilities, the Jewish Education and Community Center, have been named in their honor.

### Blumenthal Jewish Educational Building

Both the Blumenthal Foundation and its president, Herman Blumenthal, are well known in philanthropic circles, being responsible for the establishment and continuance of such outstanding projects as the NC Home for the Jewish Aged, Wildacres Retreat, Circuit Riding Rabbin, Carolina Association of Jewish Education and numerous grants to institutions and programs in the general community.

The Blumenthal Jewish Educational Building will contain all classrooms needed by Temples Beth El and Israel, Hebrew Academy and Jewish Community Center. It will house offices for the Federation, Social Services, Foundation, JCC, "CJN" news room, and provide office and record storage space for the Jewish organizations. An adult lounge, meeting rooms, library, music room and arts and crafts rooms are located around the multi-purpose room which lies in the center of the building. Capable of

seating 450 for a lecture or performance, it can be divided into 3 sections for smaller groups. The adjoining kosher kitchen will be able to serve 300 at one time.

### Leon and Sandra Levine Jewish Community Center Building

Family Dollar Stores and its founder, Leon Levine, are outstanding examples of American business success. They have both acquired a national reputation for quality of service and for phenomenal growth and development. Despite the demands of such an enterprise, Leon Levine has maintained an active leadership role in both the Charlotte Jewish community and the general community. In this, he has been matched by the activities of his wife, Sandra. Leon's concerns, involvement and support have been given to Temple Israel, the Federation and the Hebrew Academy. Sandra is past president of Hadassah and involved with Women's Division of Federation.

The Leon and Sandra Levine Jewish Community Center Building is that half of the facility built around the massive gymnasium. This complex of specialized rooms includes three racquetball courts, a dance/exercise room, full locker facilities, large indoor pool, a youth lounge and game room. An extensive health club, with separate facilities for men and



Leon Levine



Sandra Levine



Herman Blumenthal

women, including saunas and whirlpools and massage rooms and a jointly used Nautilus workout center, is also located there.

Inside, the entire building is circled by a running track. Those hungered by exercise can visit the snack bar which includes an outdoor, screened area overlooking the outdoor pool complex.

ference" sponsored by the American Jewish Congress. He was one of approximately 40 mayors from throughout the world who visited Israel under the auspices of the AJC.

His trip through Israel provided him with an insight of the land and its people. He will share his feelings and thoughts on this trip with our community.

## Federation Focuses On Local Needs For '86

The completion of Shalom Park Phase I, early in 1986, poses a challenge to the Federation and every community member. Expanded facilities for the JCC, Academy, Social Services, Federation/Foundation mean expanded budgets. In some cases the need is for additional staff; in others, it is dollars for maintenance.

"In all, \$250-300,000 more will have to be raised — not by increasing institutional membership and fees so they are out of reach. The answer lies in an increased Federation Campaign where everyone can share in securing the future of Shalom Park," stated Ron Katz, Men's Campaign Chair, characterizing the enthusiasm and intensity with which the '86 Campaign will be conducted.

A full calendar of campaign events, including educational, social and entertainment, begins with a community-wide kick-off at Spirit Square on Nov. 12. Featured will be an evening of Israeli popular music performed by the 15-person-troupe, "Chassidic Festival." The name is from the annual musical competition held yearly in which the words to the songs must come from the Hebrew Bible. When this ensemble performed two years ago at Temple Israel, 450 people crowded in to clap, sing and even to dance. "In this case," says Katz, "the word 'Chassidic' means 'joyous' rather than 'religious'. That is just the way the '86 Campaign should be run, with a sense of joy and wonder for what we have accomplished here in Charlotte



Ron Katz

and how we want our accomplishments to flourish for us and our families."

The '86 Campaign will be conducted between Sept. and Dec. 31, 1985. Dollars raised during the campaign will be for the '86 budgets of the recipient agencies for whom Shalom Park will be home, the JCC being the major recipient. Receiving allocations from the campaign will be the Blumenthal Home, Hillel, BBYO, ADL, To Life and 31 other local, state, national and international organizations and institutions.

The single largest overall recipient will remain the United Jewish Appeal through which pressing social, medical, educational and housing needs of Israel's lower economic groups are met.

"We have struck a balance between maintaining our obligation to Israel and world Jewry and meeting our increased needs here in Charlotte," says Katz. "In a compromise, UJA will receive the same dollar amount it received from the '85 Campaign. Every new dollar will be

(cont'd on page 7)

## JCC "Toasted" Membership

The Jewish Community Center sponsored a highly successful membership appreciation event on August 10 at Idlewild Olympic Club Pool. Over 125 members and newcomers to the Jewish community gathered for a barbeque dinner hosted by leadership and staff of the "J". The evening, which included music and water volleyball, was provided at no cost to all. The JCC Board took this opportunity to thank the Center's membership for their unwavering support during this transition year. The success of this event clearly reflects the desire of Center members to come together for social programs. The "J" looks forward

to greatly increasing opportunities for social programming when it finally has a home of its own.

## Mayor Gantt To Speak To Jewish Community



Mayor Gantt

The Community Relations Committee of the Charlotte Jewish Federation is pleased to announce that Mayor Harvey Gantt will speak at a joint Oneg Shabbat on Friday, Sept. 13 at Temple Beth El, 1727 Providence Rd. Services begin at 8 p.m. with the Oneg following about 9 p.m.

Mayor Gantt was recently sponsored by the CRC to attend the "Mayor's Con-

ference" sponsored by the American Jewish Congress. He was one of approximately 40 mayors from throughout the world who visited Israel under the auspices of the AJC.

His trip through Israel provided him with an insight of the land and its people. He will share his feelings and thoughts on this trip with our community.

### In The News

Book Review.....	8
Bulletin Board.....	18
Calendar.....	19
Classifieds.....	19
Editorials.....	2
JCC.....	9-13
Lubavitcher Rebbe.....	6
Recipes.....	19
Social Services.....	3
This 'n That.....	17
World Beat.....	4

### Special Feature

New Year  
Supplement

JCC Fall Class Schedule — Pgs. 9-11