



Your Dollars — A



Social Services

'85 \$44,659 '86 \$55,338

In 1985, 800 members of our Jewish community contacted the Social Services department for vocational, geriatric, family and marital counseling. The increase reflects adjustment of salaries to comparable positions in both the Jewish and general communities.

Jewish Community Center

'85 \$60,000 '86 \$100,000

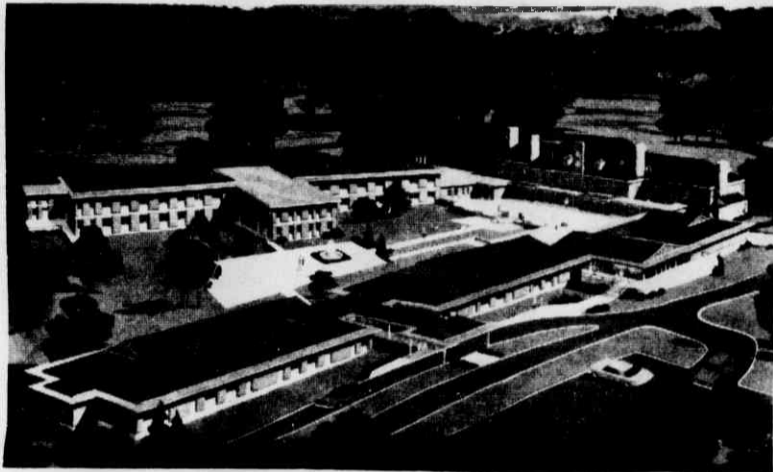
Offering the best in education and recreation to more than 2000 members and to the community at large. The increase represents increased staff and operating costs in the new facilities.



Blumenthal Home

'85 \$48,000 '86 \$50,400

One of the finest residence homes in the country. It accommodates 132 older adults of whom 31 are from Charlotte. This is a five percent cost of living increase.



Hebrew Academy

'85 \$37,300 '86 \$42,000

Serving Jewish children of Charlotte through the highest standards in general and Jewish education. The increase reflects increased operating costs in the new facility.

For The Ones Who....

"Earned It"



Joint Cultural Appeal

A cluster of nine organizations involved with promoting Jewish culture, Yiddish, art, theatre, etc.

Advanced Jewish Studies

Co-operative Program in Judaic Studies. This program funds the Chairs of Jewish Studies at Duke and Chapel Hill.

Greater Carolina Assoc. Of Rabbis.

Promoting contact and programming for all Rabbis.



Charlotte Clergy Association

Promoting contact and cooperation between clergy of all religious persuasions.

Amer. Jewish Congress.

Amer. Jewish Committee

NJCRAC

Working on national levels in the area of community relations vis a vis Jews, Israel, and social action. Each of the

"Will Grow Because of it"



three addresses itself to a different segment of the national population.

HIAS

Working with UJA to bring out Jews from Soviet, Arab and other countries and establish new lives in the West.

Jewish Braille Institute

Developing and providing materials to aid the blind and the learning disabled.

NA. Conference Soviet Jewry

Coordinating body for the ongoing effort to obtain release for Jews wanting to leave Russia.

New Israel Fund

Dedicated to developing new service deliveries in Israel with emphasis on grass roots leadership.

Torah Umesorah

The coordinating body for Orthodox day schools around

Report On '86 Allocation Committee

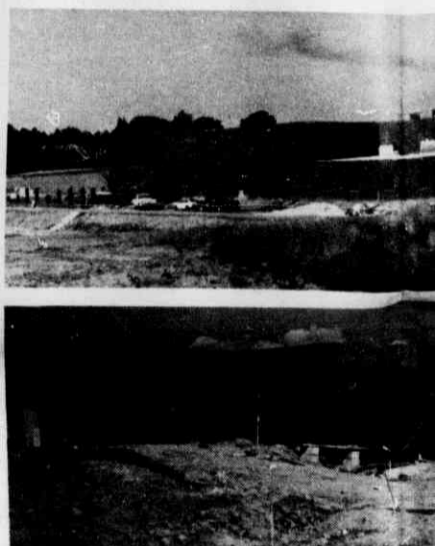
10 Major Recipients:
Federation, Foundation, JCC, Academy, Lubavitch, BBYO, Hillel, Social Services

28 Others:
Local, State, National

UJA Contingency (Funds for unexpected requests and emergencies)

3% Reserve for Uncollectibles

'86 CAMPAIGNING



The Foundation of The Charlotte Jewish Community Center

'85 No Allocation

Responsible for administrative maintenance and finances. The report anticipates a shortfall between the budget (to '83) covered by the institution in rent and the actual anticipated \$400,000.

The Other Recipients

'85 \$10,400

the nation including one in North Carolina.

Federated Council of Israeli Org.

Serving more than 400 small schools, orphanages, training institutions in Israel as a coordinated fund-raising body.

Amer. Jewish Archives

Preserving vital records on Amer. Judaism and history.

Jewish Chautauqua

Bringing Jewish speakers.