

# Our Organizations

## B'nai B'rith Lodge

Stu Epstein, the new JCC Athletic Director, was the speaker at our February monthly event, held at the Royal Palace Chinese Restaurant. Stu gave the inside story on the facilities and activities that will be available at the new JCC.

On February 10, members of the Lodge took about a dozen children of single Jewish parents to the basketball game at the Charlotte Coliseum. We treated them to pizza and soft drinks before the game. All of the children received Charlotte B'nai B'rith T-shirts as a souvenir of the evening.

B'nai B'rith recently participated in the Loaves & Fishes annual campaign to collect food for Charlotte's poor.

What do Vida Goldgar (Editor/Publisher of the Southern Israelite), Judge Arthur Kaplan (Municipal Court Judge, Red Cross volunteer, police trauma team volunteer and a living legend), and Dr. Fred Broder (Management Consultant/Master Moti-

vator) have in common? All three addressed the 1986 Atlanta Leadership Conference. Attending from Charlotte were Lodge President Ken Stern and Financial Secretary David Fligel.

Play a musical instrument? Lodge members are planning to perform at our March 26 monthly event. Previous musical experience recommended; talent not required. Call Eric Sklut at 365-0154 for information or to volunteer to be a part of the B'nai B'rith band.

— Ken Stern

## Ha Lailah BBW Gives "Baskets"

**PASSOVER:** A time for families and friends to gather around the seder table and once again experience the ancient holiday traditions. But many Jewish families and older adults in Charlotte, who are less fortunate, can not share in this. B'nai B'rith Women Ha Lailah provides "Passover Baskets" to those needy families and individuals

## Charlotte Chapter B'nai B'rith

On March 5, at Temple Beth El, Charlotte Chapter will honor its new and life members. To celebrate Mental Health Month, there will be an awareness program on mental retardation. Lunch, served at 11:45 a.m., will be \$4 per person. Babysitting is provided: \$1 per child.

March 9 from 12:30-5:30 Charlotte Chapter and the Mental Health Association will cosponsor a Children's Mental Health Fair. See article on page 11.

Charlotte Chapter will once again be involved with Special

Olympics to be held at Country Day School on April 17. Volunteers are needed to act as buddies for the many athletes participating this year. This has fast become one of the chapter's favorite pro-

jects so please don't miss out on this fulfilling and worthwhile day. If you would like to volunteer please call Ilene Burstein at 847-7232.

— Susan Coen

Money For Tomorrow —  
It's Our Business  
Call on me

**Paul S. Kronsburg**

**EQUITABLE LIFE ASSURANCE  
SOCIETY OF NY**



Suite 415  
2100 Rexford Rd.

Bus: 365-3523  
Res: 535-5775

## RENEE STEINER/REALTOR

Merrill Lynch Realty



Office — 364-1580  
Home — 366-8044

"servicing clients in the  
most professional way  
possible"

## Annoucement

The Charlotte Yiddish Institute's 8th season at Wildacres, Little Switzerland, NC, will be held May 22-25.

To add your name to the Yiddish Institute mailing list, call Baila Pransky, 366-5564 or mail information to Charlotte Yiddish Institute, Box 13369, Charlotte, NC 28211.

## Piedmont Adjustment Bureau, Inc.

Licensed & Bonded Credit Collections

704/825-9388

Shelton S. Goldstein  
President

P. O. Box 287  
33 N. Main Street  
Belmont, N. C. 28012

**Riccio's  
Riccio's  
Riccio's**

**SERVING  
CHARLOTTE'S  
FINEST  
ITALIAN FOOD  
FOR OVER  
21 YEARS**

Featuring our famous  
fresh veal and homemade  
pasta dishes

**Early Bird Special  
5:30 - 7 p.m.**

**Riccio's**

Serving Dinner Tuesday-Sunday  
116 Middleton Dr. • 378-3821  
Major Credit Cards • All ABC Permits

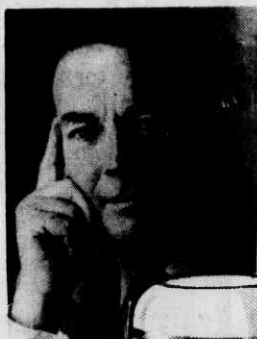


## Beguiling

Martha Wallace Ltd. has a collection of ladies party and play clothes to bedazzle you. Special occasion dresses, sweaters, and pant outfits for weddings, dances, galas, trips, indoor and outdoor parties. Visit this very special specialty shop today!

**MARTHA WALLACE LTD.**  
Inner Courtyard  
Specialty Shops On The Park  
10-6 Mon.-Sat. 366-9848

## DR. CHRISTIAAN BARNARD ON AGING.



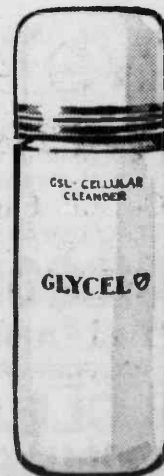
"We have found GSL can make older skin behave and look like younger skin." Christiaan Barnard, M.D.  
Announcing the arrival of Glycel, the remarkable new skin care regimen from Switzerland.

Dr. Christiaan Barnard, the renowned heart surgeon, and a team of Swiss cellular biologists have identified Glycel's key ingredient, GSL, as the most effective treatment in the recovery and rejuvenation of healthy new skin.

Come discover how your skin can look younger and more beautiful. A personal consultation and a deluxe sample awaits you at the Glycel counter.

**Gift With Purchase:** As an introduction we offer you a complimentary GIFT of GSL-CELLULAR CLEANSER (3.3 oz.) Yours FREE with any Glycel purchase.

GSL Cellular Cleanser 6.6 oz., \$30  
GSL Cellular Toner 6.6 oz., \$35  
GSL Cellular Facial Scrub 3.3 oz., \$25  
GSL Cellular Treatment Activator 1.6 oz., \$45  
GSL Cellular Day Creme 1 oz., \$60  
GSL Cellular Night Creme 1 oz., \$65  
GSL Cellular Eye Creme 1/2 oz., \$45  
GSL Cellular Anti-Aging Creme 1 oz., \$75  
GSL Cellular Clay Mask 2 oz., \$55  
GSL Cellular Facial Kit \$195



MONTALDO'S

220 N. TRYON, (704) 333-5181 — SOUTHPARK, (704) 365-3308  
Charlotte, Durham, Greensboro, Raleigh, Winston-Salem