

# The Charlotte JEWISH NEWS

Vol. 8 No. 7

Charlotte, North Carolina

August, 1986

## Federation Exploring New Areas of Programming and Services for Community

The Federation is currently exploring two new areas of programming and services for the entire community: leadership development and endowment.

A committee on leadership development, chaired by Dr. Paul Putterman, has been meeting to plan an extensive 16-month program designed to foster and develop Jewish community leadership qualities and ideals in Jewish adults in order to provide future leaders of local Jewish institutions and organizations.

Based on extremely successful programs conducted around the nation, the 40 participants will be chosen from nominees and applicants. The sessions will bring to Charlotte outstanding lay and professional leaders from around the country to speak on topics ranging from inside information on controversial issues to leadership skills to personal development. Target date for the first session is January '87.

The Endowment program

was established in the spring under the chairmanship of Shelton Gorelick. Co-chair is Herman Blumenthal.

The purpose of the Jewish Community Fund is to provide opportunities for individuals to support institutions and causes on a long term basis in ways which are beneficial to their own financial planning. Charitable giving through a variety of endowment formats has become increasingly important in recent years. The Foundation for the Carolinas, a non-profit endowment for the general community, has grown to more than \$20 million in just the past 5 years.

"Proposed changes in the tax system will make this an even more positive year for establishing endowments," says Gorelick. "This is a complicated area because of the wide range of choices including both the formats and the potential recipient institutions and organizations.

"It will be the job of the Endowment Committee to educate the entire Jewish community on this subject. We will do it through this newspaper, through mailings and through group meetings and personal contact.

"Our goal is to help secure the future of every one of our institutions and organizations through helping people plan long range philanthropy." Elected trustees of the Jewish Community Fund include Bob Abel, Don Bernstein, Mark Bernstein, Aaron Gleiberman, Meg Goldstein, Stan Greenspon, Harry Lerner, Alvin Levine, Leon Levine, Abe Luski, Hy Polk, Morris Speizman and Harry Swimmer. The current lay leaders of the JCC, Academy, Foundation, Federation, Temple Beth El, Temple Israel and Lubavitch also serve as trustees.

## Barry Hantman Appointed Foundation/JCC Director

Mark Bernstein, President of The Foundation of the Charlotte Jewish Community, and Miles Levine, President of the Jewish Community Center of Charlotte, have jointly announced the appointment of Barry Hantman as Executive Director.

Mr. Hantman formerly resided in central New Jersey where he was Executive Director of the YM-YWHA of Union County, New Jersey. Prior to that he served as Executive Director of the Seattle, Washington JCC and as a Community Consultant with JWB, a national organization with which the community center affiliates.

Mr. Hantman has approximately 20 years experience in Jewish communal work. He has taught social work at Kean College in Union, NJ and has been active in the Association of Jewish Center Workers. He has also written and presented a number of professional papers.

Mr. Hantman has a bachelor's degree from Brandeis University and a master's degree in Social

Work from New York University.

He has moved to Charlotte with his wife, Felicia, and 2 children, Daniel and Samantha.

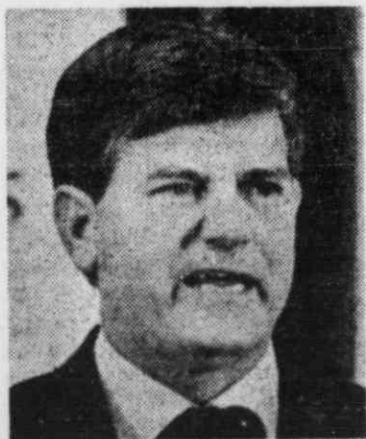
When interviewed, Mr. Bernstein and Mr. Levine officially thanked the Search Committee, chaired by Harold Josephson, for the excellent job in screening many candidates for the position of Executive Director. They said that although there were a large number of applicants, Mr. Hantman was selected because of his years of experience and exceptional qualifications. With top quality lay leadership and the choice of the new executive, the Foundation of the Charlotte Jewish Community and the Jewish Community Center can now, more than ever, move forward into the future in order to best serve the community.

Many of you have already had the opportunity of meeting with Mr. Hantman; those of you who have not, stop by his office (preferably by appointment) and say hello.

## Dedication Weekend Being Planned

All of the institutions and the Foundation will be involved in a weekend of dedication activities, Friday-Sunday, September 19-20. The weekend will begin with a joint Shabbat service and Oneg for Temple Beth El V'Shalom and Temple Israel, scheduled to be held at Temple Beth El. Current plans call for the involvement of many of the Hebrew School/Sunday School and Academy children in the service. A scholar-in-residence for the weekend is also part of the plans.

Saturday evening will feature a dinner/dance. The



Gov. Martin

program will include remarks by Governor Jim Martin and

Mrs. Esther Leah Ritz, immediate past president of the Jewish Welfare Board, the national association for Jewish Community Centers.

Highlighting the event will be a musical review of the history and accomplishments of our own Charlotte Jewish community. Performed by a professional troupe of actors and singers, the review will be a fast paced tour of the people and events which have shaped our community and brought us to our current status. Sunday morning, the school

(cont'd on page 11)

## Academy Gala Brings Elegance to Shalom Park

By Martha F. Brenner

Towering centerpieces of delicate peach-colored flowers transformed Shalom Park's multi-purpose room into an elegant banquet hall at the N.C. Hebrew Academy Spring Gala dinner dance June 1.

The black, tubular bases for the fresh flowers were the handiwork of Academy parents and staff, as was the gourmet dinner honoring the school's founders. The affair raised \$8,500 for the school, according to Gala Chair Ann Abel.

Patti and Steward Scher and Berta and Moshe Straz



Academy President Peggy Gartner reads certificate of appreciation honoring the 18 who purchased school's first home. Abe Luski (L) accepted the honor on behalf of the founders.



Winners of the Academy's Spring Gala drawing, Annette and Richard Gross, shown with their prize. Photos/Alan Goldberg

(Berta is the school's administrator) created the table centerpieces. The flowers were later donated to the children's wards of local hospitals.

The Academy Gala, a tribute to the men who purchased the day school's property in 1971, was the first formal dinner prepared in Shalom Park's spanking new kosher kitchens. Peggy Gartner,

Academy president and a professional caterer, with the assistance of Beryl Fishman, a former Academy parent and also a professional caterer, led a talented team of cooks and bakers who managed to prepare and serve a flawless meal despite the inevitable "new equipment" and "no equipment" problems.

(cont'd on page 10)

## UJA Sponsors Heritage Mission

The United Jewish Appeal's Major Gifts Heritage Mission to New York City, a unique adventure through two centuries of Jewish history and culture, will take place November 5-6. The announcement was made by UJA National Vice Chairpersons Elaine Winik of New York, Larry Hochberg of Chicago

and Steve Grossman of Boston, who will serve together as Mission Co-chairs.

Mission participants will attend a private art show, visit the historic Lower East Side, sail on a yacht to the Statue of Liberty, enjoy home hospitality with New York's dynamic Jewish leadership and receive an analysis of Middle Eastern events by high-level Israeli diplomats.

Due to the scarcity of hotel rooms in New York City, those interested in participating on the mission should make a reservation immediately. Once the mission has reached its full capacity, no additional reservations can be accepted.

Additional information can be obtained from your local federation or by calling Roberta Lawit at (201) 489-2700.

### In The News

Academy News.....	3
Calendar.....	16
Classifieds.....	15
Editorials.....	2
JCC.....	8-9
Lubavitch.....	5
Organizations.....	12-13
Recipes.....	16
Social Services.....	6
Temples.....	14
This 'n That.....	15
World Beat.....	4
Shalom Y'all.....	7