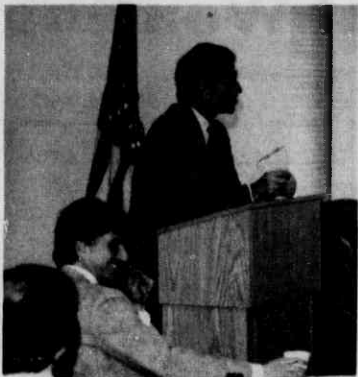
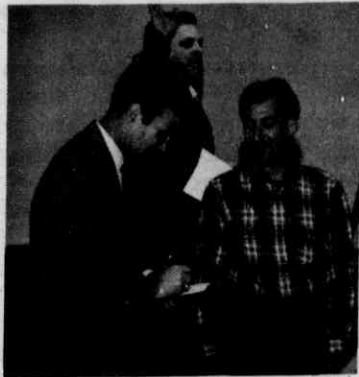


Charlotte Jewish Federation

Worker Motivational Session



Carl Scheer, vice president of the Charlotte Hornets, was guest speaker. Paul Edelstein (L) introduced him.



Carl Scheer (L) giving "autograph" to Elliot Gartner (R). That's Richard Klein waving to someone.



Some of the "motivated" workers.

It Pays To Advertise

If YOU WANT to Reach the Jewish market YOU MUST Advertise in the Charlotte Jewish News.

366-5007
366-9715 366-6632



"State of the Union" Address

cont'd from page 2

tinued to fund Lubavitch of N.C. Many, many people expressed concern as to whether this allocation was in the best interest of the total community. The Allocations Committee and the Executive Committee deliberated long and hard and reached the conclusion that the Federation must honor its pledge to the community that Lubavitch of N.C. would receive an allocation in 1989. This allocation will depend on campaign results and will be treated as every other allocation — in terms of cuts made across the board. However, because this issue is of such concern to so many donors, the Federation will reevaluate its funding of Lubavitch of N.C. and present its recommendations to the Board of Directors before the 1990 Campaign begins.

The Teen Israel Summer Scholarship Program, under the guidance of Phil Joffe, developed and clarified new guidelines for its program and is now in the capable hands of Wendy Rosen. The Cash Collections Committee, chaired by Ron Katz, developed a new policy for write-offs and the By-Laws Committee Chair, Hal Levinson, helped update and make some much needed changes to our by-laws. A new Personnel Committee, chaired by Emily Zimmern, has been formed to evaluate the performance of our Executive Director, based on guidelines established by the Executive Committee.

Through the auspices of

Jewish Family Services, steered by Adrienne Rosenberg, director, and Evelyn Berger, Chair, the Federation has developed a Chaplaincy Program, revised the guidelines for its emergency loans, established the Ellis Berlin "Ezra Fund," and began to investigate alternative funding sources through a United Way task force.

Joel Goldman has successfully put together an Editorial Board for our Charlotte Jewish News. A Jewish Education Committee was formed, under the guidance of Ruth Goldberg, which reinstated the Joint Jewish Studies Program and began the long and arduous task of investigating the possibility of a Bureau of Jewish Education.

Women's Division continues to provide outstanding programming, outreach and education to our community with ever increasing campaign results. This is due to the hard work and dedication of Emily Zimmern, Meg Goldstein and the Women's Division Cabinet.

Our Campaign Committees' accomplishments have been manifold. For that we can thank Richard A. Klein, Paul Putterman, Meg Goldstein and the Campaign chairs. We have developed a strategy for major gifts and upgrade. We have broadened the base of givers at beginning levels and we have had the earliest, most detailed campaign plan in our Federation history. Our Super Sunday team, led by Wendy Rosen, has been enthusiastic and well organized. The 1989 Campaign has been a most difficult challenge, but through it all we have kept our vision clear, our purpose high, and our motives pure. If our goal this year was beyond our reach, then it

means we have the courage to try. It means we will never become complacent because we have visions of an ever stronger, more responsive community. Mike often says to us that soliciting is holy work and indeed it is commanded in Deuteronomy, "Open your hand to the poor and needy kinsmen in your land." So, from my point of view, all of you are angels and will be rewarded with the words of Isaiah, "and the work of Tzedakah shall be Shalom."

So much for 1988 — now let us look to the future. My goals for the coming year include completing our computerization process, expanding staff, developing an effective endowment program, establishing a long-range planning committee, working on behalf of Soviet Jewry, expanding our missions to Israel and building a campaign structure that will help us reach our fundraising potential of two million dollars. Ambitious goals, but necessary, if we are to meet the challenges of the 1990s and beyond. It is my firm belief that only in the context of Klal Yisroel (building community) can we begin to realize our full potential. It is my hope that each of us remembers he is a member of a chosen people — chosen for "Tikkun Olam" (repair of the world) and what better way to begin to work toward perfection than right here in Charlotte, N.C.

Thank you for your confidence in reelecting me and for your support in the coming year. Please be patient with my shortcomings and know that I am working hard to be worthy of your trust. I look forward to our continued association.

McALPINE STATION

Levine Properties is proud to offer office, retail and commercial sites at McAlpine Station, the largest undeveloped I-1 zoned property in the southeast Charlotte area of Monroe Road at Village Lake Drive.

- 76 Acre Development
- Zoned I-1
- Building Sites from 1-15 Acres Available
- Retail Frontage on Monroe Road
- Office, Retail And Commercial Building Sites
- Office/Retail/Showroom Condominiums
- Build-to-Suit Options
- Vibrant Southeast Charlotte Location

THE DEVELOPER . . . Levine Properties, a Charlotte based company with a long term commitment to Greylyn Park and McAlpine Station and to the tenants of this fine development. We're helping to make success a part of your business plan.



GREYLYN • BUSINESS • PARK



GREYLYN BUSINESS PARK . . . the outstanding 23-acre master-planned business community with over 266,000 square feet of flexible retail, showroom and warehouse space. *Already 90% leased! Construction has started on the 3 remaining buildings.*

THE ADDRESS . . . Monroe Road and Sardis Road North, a vibrant southeast Charlotte location near some of the region's largest corporate headquarters plus many restaurants and banking facilities.

GREYLYN BUSINESS PARK

Leasing Spaces for:

- Office/Showroom
Sizes from 1,250 square feet
- Office/Showroom/Distribution
Sizes from 2,400 square feet

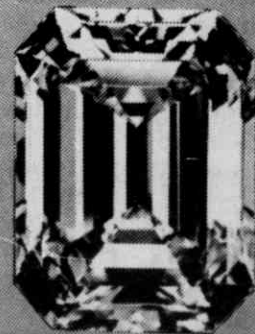
9301 MONROE ROAD

For more information, call 704/847-0060.



P. O. Box 2439
Matthews, North Carolina 28106
704/847-0060

Our Reputation Is On The Rocks



Diamonds. Colored stones. Pearls. And other

high-quality precious jewels. Donald Haack has over 30 years' experience with some of the finest gems in the world. His knowledge comes from the ground up — mining rough stones in the South American jungles. He's traded with

the best diamond brokers in Europe. And he is

internationally respected for quality, value and reasonable price.

When you are looking for the perfect gem, see Donald Haack. All transactions are confidential.

DONALD HAACK
DIAMONDS

275 One First Union Center • 301 South College Street • Charlotte, NC 28202-6034
704/373-7720 • NC 1-800/532-6013 • US 1-800/282-1436