

Charlotte Jewish Federation

Federation Holds Annual Meeting

The Luski Youth Activity Center was crammed with over 100 people on Jan. 15, who came to learn of the Federation's accomplishments and goals for the coming year. At the same time they were saying "thank you" to Bobbi Bernstein, who served as Federation president during 1987-89, and welcoming Emily Zimmern, the incoming president.

Concluding the business portion of the meeting, Meg Goldstein spoke about the development of the Charlotte Federation's "Jewish Community Fund" (Endowment Fund). Shelton Gorelick, chair of the Nominating Committee, presented the slate for its Board of Trustees which was unanimously accepted as was the slate for Federation's Board of Directors.

Sara Schreiber introduced Barry Swartz, Charlotte's Council of Jewish Federation consultant, who addressed the group, praising them by summarizing Charlotte's accomplishments over the past 10 years and its award-winning programs. Mr. Swartz also sent a challenge to the Federation leadership regarding Soviet Jews and their resettlement and the necessity for everyone to participate in this endeavor.

Mike Minkin, executive director of the Charlotte Jewish Federation, then spoke about



(L to R) Barry Swartz, Mike Minkin, Emily Zimmern, Bobbi Bernstein



Shelton Gorelick holding the L'Chaim award.

the continental Jewish agenda and urged members of the Board to participate in activities and issues regarding Israel and other nations through the United Jewish Appeal. After this talk, Bobbi Bernstein passed the gavel

to Emily Zimmern.

A special award presentation occurred during which Shelton Gorelick received the L'Chaim award for outstanding service by a volunteer to the Federation.

Long Range Strategic Planning Identifies Critical Issues

Monday evening, January 29, members of the Federation's Long Range Strategic Planning (LRSP) Committee, spent over three hours in a workshop facilitated by Mary Williams, organizational consultant.

The central purpose of the workshop was to develop four to six critical issues on which the LRSP Committee can focus its attention for the next six months in order to establish five year priorities.

The first task of the group was to look at the Federation's Mission Statement and discuss its meaning in terms of personal values and challenges. Next came an environmental scan which identified external forces or factors having an impact on the Jewish community today. Once that was accomplished, the group compiled a "wish list" of what it would like the Jewish community to look like in five years. With that in mind, the committee broke into small groups and began to identify the critical issues that need further study in order to prioritize community needs.

After a lengthy discussion, a consensus was reached identifying the following five critical areas of concern (not prioritized):

1. Human and financial resource development
2. Jewish global concerns (Israel, Soviet Jewry)

3. The changing nature of the Jewish family

4. Jewish education and Jewish values

5. Demographics/Marketing

The workshop ended with the appointment of a convener to each area of study who will develop a committee to investigate a critical area of concern. At the conclusion of these five areas of study, the LRSP Committee will begin to develop priorities for the Federation to adopt in the next five years. It is hoped that a broad cross-section of the community, both affiliated and non-affiliated, will have an opportunity to participate in setting priorities. All who are interested are encouraged to call the Federation office, 366-5007, for further information.

The members of the LRSP Committee are: Evelyn Berger and Bobbi Bernstein, co-chairs; Don Bernstein, Paul Edelstein, Doug Gentile, Margie Goldstein, Scott Gorelick, Stan Greenspon, Vicki Hopkins, Phil Joffe, Harold Josephson, Richard Klein, Sheila Kritzer, Harry Lerner, Moses Luski, Ed Newman, Sol Shapiro, Marcia Simon and Mattye Silverman. The professionals include: Barry Hantman, Mike Minkin, Adrienne Rosenberg, Rabbi Robert Seigel and Rabbi Marc Wilson.

FREE! NC Individual Tax Return Preparation with Federal Return

- Guaranteed Tax Return Preparation
- Convenient Hours
- Computerized Preparation

- Returns for all States
- Specialist in Small Business Taxes
- Electronic Filing for Fast Refund
- Available Year Round

Call For An Appointment
Murray Monosoff, CMA
offer expires 4-16-90

568-0372



General Business Services
4822 Albemarle Rd.
Charlotte, NC

B&P Women's Division to Meet

The Business & Professional group of Women's Division presents "Working Women—Wining, Dining & Socializing" to be held at Shun Lee Palace on Wednesday, March 21, at 6 p.m.

It will be a wonderful evening of networking and kibbitzing, including a short fun video, produced by Paul Rousso. Please bring a friend and RSVP to the Federation office, 366-5007, by March 14. Also bring your business card in order to be eligible for door prizes.

Money For Tomorrow —
It's Out Business
Call on me

Paul S. Kronsburg
Agent/Registered Representative

EQUITABLE LIFE ASSURANCE SOCIETY OF U.S.

Suite 415
2100 Rexford Rd.

Bus: 365-3523
Res: 535-5775



LEATHERMEN'S GUILD-THE FINEST!

- German Premium Leather • Select from 150 Colors
- Also available in French & Italian Calfskin

Lifetime Warranty

You'll definitely love our discounts*

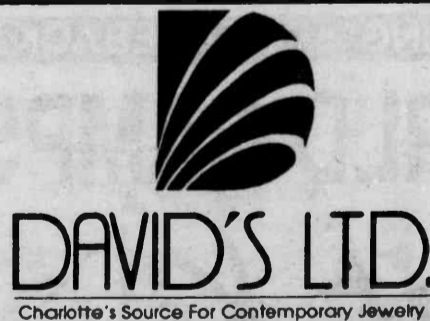
"CHARLOTTE'S ONLY FINE LEATHER SPECIALTY SHOP"



*We Will Not Knowingly Be Undersold

LEATHER Gallery Ltd.
2400 Park Rd. — Dilworth Area — 372-4609

Tue.-Fri. 10-5 Sat. 10-3 Sun., Mon. & Evening by Appt.



Charlotte's Source For Contemporary Jewelry

Charlotte's Source...

- Contemporary Jewelry
- Fine Diamonds
- Precious Gemstones
- 14K Gold Jewelry

Jewelry Design and Expert Repairs On The Premises

Open a David's Ltd. Charge Account Today!

Radisson Plaza Shops • 375-6543 • Mon. - Fri. 10-6, Sat. 10-5
Parking Validated-Southern National & Radisson Hotel.

CONFUSED?



Any advertising salesman can confuse you with his own peculiar sales pitch on advertising rates, marketing areas, circulation, readership, etc.

But if you want to reach the Jewish market, YOU MUST advertise in *The Charlotte Jewish News*. Wipe out confusion. Call us today.

366-5007