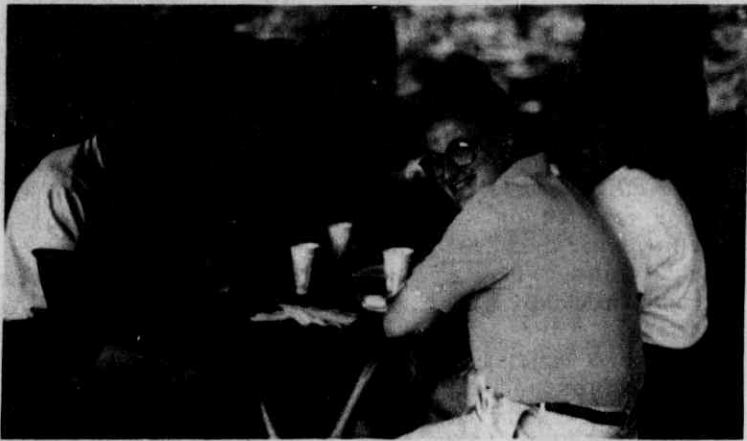


Charlotte Jewish Federation

Leadership Development Update



Enjoying the picnic were (clockwise from left): Gene and Amy Marx, Phyllis Berlin, Marci and Rick Willenzik.

By Ken Stern

The 1990-1992 Federation Leadership Development program, a 15-month educational and leadership training program, has passed the halfway mark. Our June program dealt with the topic of Worldwide Jewry and the Soviet Resettlement. Our speakers for the program were Emily Zimmern, president of the Charlotte Jewish Federation, and Adrienne Rosenberg, director of Jewish Family Services. Emily provided the group with an overall picture of worldwide Jewry. She discussed the commitment that Jews in Charlotte and in other cities in the U.S. feel to our brothers and sisters in countries around the world. She reviewed the history of resettlement efforts worldwide. The Ethiopian airlift had just been completed, and Emily was able to obtain a videotape of the airlift for the group to view.

Adrienne spoke to the group about the local resettlement of

Soviet Jews. She spoke of the planning involved, the joys and obstacles that must be overcome, the emotions felt by the Soviets upon their arrival and the cultural differences that must be learned. The videotape, "Operation Exodus in Charlotte: Soviet Resettlement," was shown.

In July, the Leadership Program sponsored a picnic at Boyce Road Park. The afternoon provided participants the opportunity to meet socially and have a chance to get to know each other, as well as meet the 'significant others' in their lives. Hot dogs, salads, drinks and watermelon were served. A brief shower did not dampen the enthusiasm of the group, particularly as we were under shelter at the time.

In August a teamwork and trust-building program at the Charlotte Outdoor Center was held. Upcoming events include sessions on the Holocaust and on anti-Semitism.

There's a Mission to Israel for Everyone

VIP President's Mission — Oct. 13-22

Excitement is building for the President's Mission! This mission will provide you with the opportunity to view Israel firsthand during this historic moment of the ingathering of the olim and to express your solidarity with Israel.

The mission includes a pre-mission visit in one of the following countries: Czechoslovakia, Germany, Greece, Morocco, Poland, Spain, Turkey,

USSR and Yugoslavia. In each of these countries, you will have the opportunity to explore the history of a Jewish community and meet with its leadership.

In Israel, mission highlights include confidential briefings with President Chaim Herzog and Prime Minister Yitzhak Shamir and informative meetings with Soviet, Ethiopian and Albanian immigrants.

The cost is \$3,500 with a

minimum gift of \$10,000 to the 1992 Regular Federation Campaign. There is a UJA subsidy of \$1,750, thereby making your cost from New York, \$1,750.

For further information, please contact Sol or Ada Shapiro, President Mission Co-Chairs, 542-6455; Nicki Levine, Mission's Chair, 847-1149; or Pam Appelbaum, Federation Staff Associate, 366-5007.

National Dentist and Physician Mission

Here it is...the National Dentist and Physician Mission to Israel...just what the doctor has ordered! Not only will you be treated to the outstanding UJA Missions program, but you will also have the opportunity to earn 12 CME credits. The itinerary will be appealing and compelling for all dentists and physicians. Mark your calendars

for Oct. 27-Nov. 6.

Attractions will include:

- Meeting special Israeli medical professionals
- Visiting army clinics
- Visit Beit Hatefutsoth — Museum of Jewish Diaspora
- Hospitality at the homes of Jewish doctors
- Attend courses on the cutting edge of medicine and med-

ical technology

• Pay tribute to Israel's fallen soldiers at Mount Herzl Military Cemetery

Join the hundreds of American Jews who are visiting Israel now and thousands more who are signing up for this fall. For further information, contact Nicki Levine, 847-1149, or Pam Appelbaum, 366-5007.

Charlotte Community Mission '92

Next year in Jerusalem — Tel Aviv, Haifa, Carmel, Sefad, Masada, the Golan Heights — can come true for you. Join Susan and Donald Jacobs, Joe and Linda Zucker, Nicki Levine, Rich Osborne, Meg Goldstein and Matt Luftglass, Phyllis Schiffman and Margie Goldstein on June 28, 1992 for the trip of your life on Charlotte's next Community Mission to Israel. The group will return to Charlotte on July 8.

UJA Missions are truly the best way to experience Israel.

See the country, meet the people, feel the spirit of our homeland. Greet the planes full of Soviet olim; visit a home on the West Bank; welcome the Shabbas Queen at the Kotel (Western Wall). Enjoy a ride on a camel with Bedouins and a campfire dinner under the desert stars; float on the Dead Sea; climb Masada. Shop quaint art studios and stores brimming with tefillin, yarmulkas, wall-hangings,

challah covers, kiddush cups, all of which will forever remind you of your dream trip.

Interested? Of course! Call Nicki Levine, 847-1149 or Pam Appelbaum, 366-5007 for more information. We're planning a great trip for a super group of folks and we want you to join us for Charlotte Mission '92.

— Nicki Levine

ENCORE

Nearly new designer & name brand fashions for the discriminating woman.

• ON CONSIGNMENT •

Lorraine G. Oudin
332-3365 [store]
372-0860 [home]

Sheryl R. Auerbach
1721 Kenilworth Ave
Charlotte, NC 28203

L'Shana Tova

Berrybrook Farm Natural Food Pantry



COMPLETE LINE OF NATURAL FOODS & VITAMINS

Juice Bar - Sandwiches, Salads & Soup Made Fresh Daily To Go 11-4
Organically Grown Produce
Nutritional Books • Birkenstock Sandals
Cruelty Free Natural Cosmetics
Champion & Acme Juicers
Vitamin & Senior Citizens Discounts

8428 Park Rd. 552-9801
1257 East Boulevard 334-6528

M-Sat 9:30-6

National Missions Calendar

1991

Oct. 2-16	National Zahav Mission
Oct. 6-16	Women's Division Mission to Czechoslovakia
Oct. 13-22	\$10,000 President's Mission
Oct. 27-Nov. 6	National Dentist and Physician Mission
Nov. 10-18	Southeast Regional Georgia Mission
Dec. 8-18	Southeast Regional Alabama Mission
Dec. 22-Jan. 1	National Winter Family Mission

1992

Mar. 22-Apr. 1	Southeast Regional Mission
June 28-July 8	Charlotte Community Mission

For further information kindly contact Nicki Levine, Mission's Chair, 847-1149 or Pam Appelbaum, 366-5007.

"WE MARKET THE SIMPLEST, EASIEST PROGRAM FOR ORDINARY PEOPLE TO ACCUMULATE WEALTH WITHOUT ANY INCREASE IN THEIR BUDGET!"

Call for information on the most innovative financial security program ever developed.

(704) 556-6961

USA FINANCIAL GROUP

FJL ELECTRIC

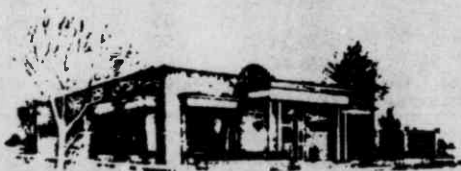


Service is Our Business

Residential • Commercial • Industrial
35 years experience

Frank Lutz

588-2258



The Gutmann Galleries Inc.

"A Museum of Gifts"

Thom Powell

Phone 376-6501

129 Perrin Place (Just off Providence Road)

Free Gift Wrap and City-Wide Delivery