



# The Charlotte JEWISH NEWS

Vol. 14 No. 8

Charlotte, North Carolina

September 1992

## Temples to Celebrate the New Year in New Buildings

### Temple Israel to Hold Dedication and Gala Prior to Holidays

By Cynthia Chapman & Lois Schneider

Would our ancestors from Eastern Europe believe it? After the mass immigration to America, after the Shoah, Jewish community thrives in Southern America in Charlotte, North Carolina. The dream of Shalom Park reaches a new level of achievement this fall with the opening of both new synagogue buildings.

The entire community is invited to the dedication of Temple Israel's new edifice scheduled for September 13 at 2:30 p.m. It is an event that Temple Israel's congregation has been looking toward with great excitement.

Temple Israel has long been part of Jewish life in Charlotte. It officially began when the Hebrew Benevolent Society was chartered by the General Assembly of North Carolina, on December 24, 1870. In September, 1895, it was formed as Congregation Agudath Achim, Hebrew United Brotherhood.

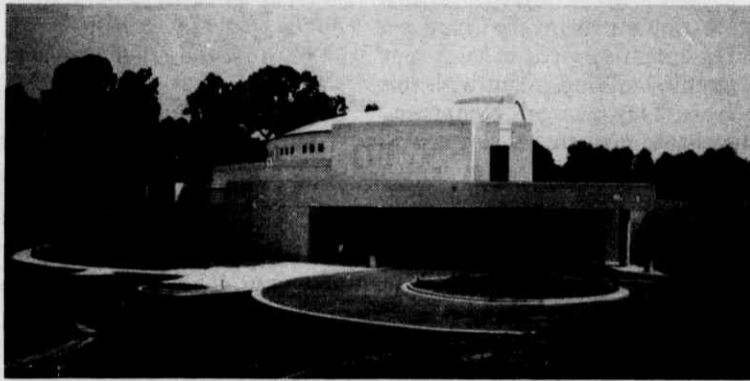
The decades since have brought many changes to the Jewish community and the larger Charlotte-Mecklenburg area. The Temple was first on Seventh Street and then on Dilworth Road. Moving the shul to Shalom Park has already infused Temple Israel with a new vitality.

We invite you to share our excitement, both at the dedication and in the years to come. Temple Israel has many programs to meet many needs. Whether you are young or old, new to Charlotte or a longtime resident, now is the time to discover (or rediscover) what Temple Israel has to offer. We welcome you to join us.

### Rabbi Seigel to Take Post in Calif.

Rabbi Robert Seigel has resigned as Temple Beth El's rabbi to accept a similar position at Temple Beth Israel, a reform congregation of 348 families, in Fresno, Calif. Though somewhat smaller than Temple Beth El which has approximately 500 families, Seigel feels that it is a time for change for him. He will remain in Charlotte until October.

A Charleston native, Seigel came to Charlotte 12 years ago from his post as a chaplain at the University of Miami. Years before that he served as Hillel director at the University of N.C. at Chapel Hill. He was hired to lead Temple Beth Shalom, which was a small reform con-



View toward the front of the new Temple Israel.

#### About the Dedication

Before the dedication, the festivities will start with a Torah March from Holocaust Square at Dilworth Road to the new building. The Torah March symbolizes the transition from the old site of Temple Israel to the new building, and from the past to the future. After the Torahs arrive in Shalom Park, they will be passed among all the past presidents until they arrive at the front of the new building.

A mezuzah will then be hung at the front door and the final cornerstone will be set. Cornerstones from both the Seventh Street shul and the Dilworth Road shul have been placed already.

Following the ribbon cutting, everyone will move indoors for the program. Speakers will include a representative from United Synagogue, Rabbi H. Scott White and Sol Jaffa. A reception will be held in the Social Hall following the program with music by VIVA KLEZMER!

A bronze commemorative medallion will be available for sale featuring a graphic representation of the new building.

Medallions of the Dilworth Road shul will also be available for purchase at the dedication. These are certain to be treasured keepsakes in the years to come.

#### Weekend Festivities

The dedication will cap a weekend full of celebration including family services on Friday night and special Shabbat services on Saturday morning. Sisterhood will sponsor an art auction Saturday night, Sept. 12.

Also, congregation members are invited to participate in a bake-in in the new Temple kitchen for Sunday's reception. The bake-in will be held Wednesday, Sept. 9 and Thursday, Sept. 10, 10 a.m.-1 p.m. and 6 p.m.-9 p.m. You can call the Temple Israel office for more information at 362-2796.

#### Gala Dinner Dance

But the celebration won't end that weekend. There will be a Gala Dedication Dinner Dance held on Saturday, Sept. 26 and

See GALA page 22

### What is Temple Beth El?

By Ethel Gordon

What is Temple Beth El? It is a synagogue, a meeting place for Jewish worship, religious study and social interaction based in the Charlotte community but extending its interest nationally and worldwide.

In reality, it is much more than that! It is a magnificent new structure atop a hill in Shalom Park. The building was inspired by historical synagogues evoking ancient and traditional Judaic elements and was designed by Kehert, Shatken, Sharon Architects of Princeton, New Jersey.

It is also much more than that! It is a group of approximately five hundred families of all ages, sizes, with diverse interests and various objectives for belonging to this almost fifty year old Reform congregation.

It is also much more than that! The varying interests and foresight are what brought about the new Temple Beth El, and going further back in history, Shalom Park. It will be these varying interests of vibrant creative people which will continue the momentum of what was begun more than 20 years ago when 24 acres were purchased on what is now the site of the new Temple Beth El as we see it today. Shalom Park evolved from this original purchase.

It is also much more than that! It is a place where in our sanctuary congregants welcome the Sabbath facing an antique marble ark from a Passaic, New Jersey temple now disbanded. It is a sanctuary filled with prayers, songs and magnificent organ



Antique marble ark in Temple Beth El's sanctuary.

music, filled with B'nai Mitzvah, betrothal prayers, baby namings, Tot Shabbats, conversions and sermons. It is a sanctuary that seats 380 with expansion to 1093. A nursery featuring Jewish activities is provided for children of those attending services.

Temple Beth El is still much more than that! It is a Chapel/Library with the focus being the Ark and Ner Tamid (Eternal Light) from our previous Temple, so familiar to our congregants whose history dates from 1949. This area will be used for more intimate services.

It is also much more than that! Our Fellowship Hall with its barrel vaulted ceiling and large mullioned window overlooking a soon to be in place garden and permanent Sukkah will seat 325 for dinner. Its first use for this number will be October 10 when a gala dinner reception will be held celebrating the dedication of the Temple. Featured that evening will be the international comedian David Brenner. The See WHAT page 15

## Millions Raised after Meeting with Rabin

The United Jewish Appeal held the most successful single fund-raising event in its fifty-three years history on Aug. 13.

A total of \$67.3 million was raised during a meeting of UJA leaders from throughout the U.S. with Israeli Prime Minister Yitzhak Rabin. The Prime Minister laid out the directions of the new government in Israel, including accelerating the peace negotiations and establishing immigrant absorption as one of the country's top priorities. He told the leadership gathering that Israel's doors would always remain open for new immigrants, who must be given the opportunity of better lives in their new homeland.

The meeting, held at the Plaza Hotel in New York City, was cochaired by Charles Bronfman,



L to R: Joel Tauber, Max M. Fisher, Prime Minister Yitzhak Rabin, Leslie Wexner, Charles Bronfman. UJA photo/Robt. Cumins

cochairman of the Board of the Seagram Company, Ltd., and by Leslie Wexner, founder, president and chairman of the Board of The Limited, Inc. Max M. Fisher, a UJA Honorary National Chairman was Honorary Chairman of the event. UJA

President Marvin Lender organized the special session.

The funds pledged will support Operation Exodus, the special UJA campaign for bringing Soviet and Ethiopian immigrants to Israel and assisting in their absorption. As of July 31, 1992 Operation Exodus raised \$728 million. UJA, in partnership with local Jewish federations and smaller communities, also conducts an Annual Cam-

See MILLIONS page 6

In The News

CAJE ..... 13  
Calendar ..... 23  
Classifieds ..... 23  
Ed-Op ..... 2-3  
Eng/Marriages ..... 18-19

Family Services ..... 8  
Federation ..... 6-7  
JCC ..... 11-12  
Lubavitch ..... 16-17  
Organizations ..... 20-21

Resettlement ..... 9  
Temples ..... 14-15  
This 'n That ..... 21  
Tributes ..... 13  
World Beat ..... 4

JCC Classes - page 10  
SPECIAL SUPPLEMENT  
Dining Out/Catering  
Entertainment  
Holiday Recipes