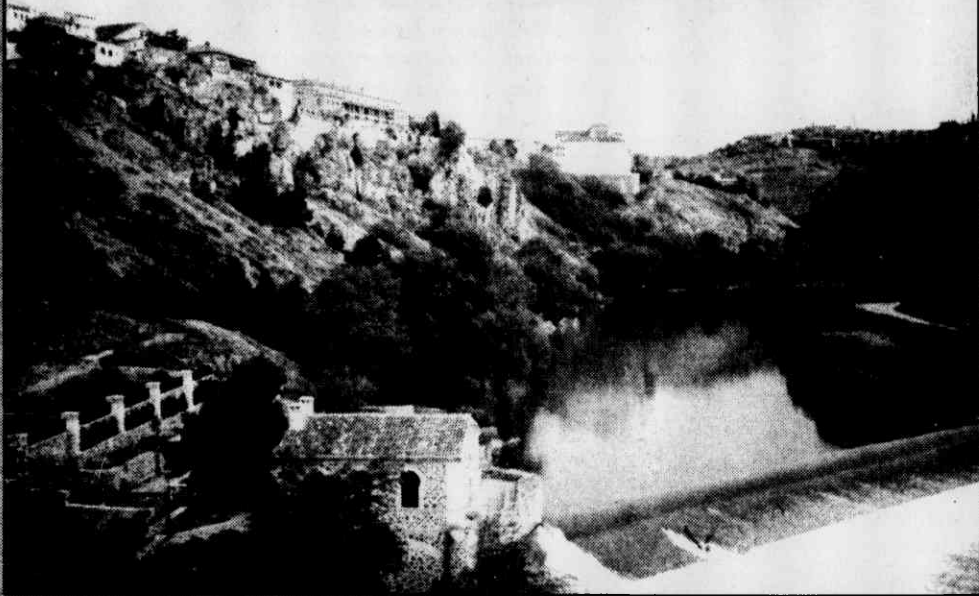


Travel Talk

Madrid and Toledo



by Maxine Silverstein

My husband Gary and I visited beautiful Spain in May and divided our time between two great destination cities, Madrid and Toledo.

Madrid—in fact all of Spain—wants Jews to know that 500 years after expelling them, Spain welcomes them again.

Madrid is home to over 3,000 Jews who come from three backgrounds. Eastern Europeans came during or immediately following World War II. Latin American Jews came in the 1960s. Jews from Israel, England, Hungary and the United States comprise the third group. Culturally, the community considers itself Sephardic.

A visit to the Prado museum is a special treat. It contains a collection of masterpieces by Velazquez, Goya, El Greco, Rubens, Titian, Tintoretta and others and is one of the world's great art repositories. A number of its works have a particular attraction for Jews because the subjects seem decidedly ethnic.

In addition to historic sights, Madrid offers a variety of restaurants. Be prepared—the locals dine late (ten or eleven P.M. is the norm). Spanish cuisine is a wonderful adventure. Valencia's paella (saffron rice with fish or chicken) is a favorite.

Casa Botin is a popular Madrid eatery. Founded in 1725, it is revered as the world's

oldest restaurant. The building is charming, with four floors of wood-beamed and tiled dining rooms. Ernest Hemingway was a Casa Botin regular, and it is claimed that Goya was a dishwasher there.

With more than 52,000 shops, Madrid has something for everyone. Beautiful Spanish lace, Majorca pearls and Spanish tiles are all specialties. Remember that siesta time is from 1:00 to 4:00 p.m. when all the stores are closed. Nothing is open on Sunday.

Forty-five miles south of Madrid, about an hour away, is Toledo. Built of golden-hued limestone, this picturesque walled city is set high on a cliff. For both its situation and its spirituality, Toledo has been compared with Jerusalem. Toledo was once Spain's capital and a leading center of Jewish culture, with Spain's largest Jewish population. There reminders of the country's Jewish past still stand. Its cobbled streets are narrow and steep. But though its many blind alleys make it easy to get lost, recently placed directional signs (with Stars of David on a red background) clearly point the way to the most significant Jewish landmarks.

Spain is a wonderful, exciting place to visit. The country's desire to welcome Jewish visitors and give you a chance to explore its Jewish past will make you love this special place.

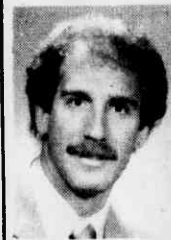
Weequaric High Grads to Celebrate 50th

Okay, all you readers who moved south from New Jersey, search your memories! Do you know someone who graduated in 1947 from Weequahic High School in Newark? If so, their classmates are trying to find them for the 50th reunion which will take place May 4, 1997 at the Mayfair Farms in West Orange, New Jersey.

Contact Janet Goldstein Chernus, June '47, 14 Bowling



Drive, Livingston, NY 07039 or Gloria Schonwetter Roemer, January '47, 280 Prospect Ave., Apt. 9L, Hackensack, NJ 07601.



Larry Horowitz, CLU, ChFC

Hinrichs Financial Group
230 S. Tryon St. - Suite 1400
Charlotte, NC 28202-3215
(704) 371-8600

Helping in the *CREATION, PRESERVATION* and *DISTRIBUTION* of your Estate.

COOL AND SCENIC
BLUE RIDGE MOUNTAINS

Rubin's Osceola Lake Inn

FRIENDLY, INFORMAL RESORT HOTEL

Delicious Jewish/American Cuisine

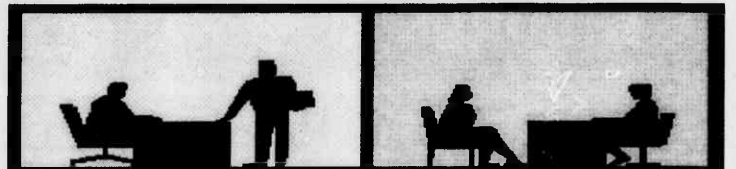
Fishing • Golf • Tennis • Boating • Whirlpool
Swimming Pool • Activities • Entertainment

OPEN JUNE 14th TO SEPTEMBER 30th

For Brochure & Rates Call: 1-800-468-3540
or Write: P.O. Box 2258 Hendersonville, North Carolina 28793

Buy or Sell a Business in strict confidence

Let us handle the time-consuming details,
the qualifying of potential buyers & sellers
and the Marketing...through our
national business transfer network.



Pathfinder Business Acquisitions
(910) 215-4558



RECEPTIONS • REHEARSAL DINNERS
BRIDESMAID LUNCHEONS • LODGING
ANNIVERSARIES • GALAS
BAR AND BAT MITZVAHS

A Southern estate located in
Charlotte's oldest neighborhood.
Elegance for all your celebrations.

Recently renovated with gracious reception
areas and twelve private suites in a
beautiful secluded setting

the Morehead Inn

1122 E. Morehead Street • Charlotte, NC 28204
704-376-3357

Wishing You Happy Holidays And
Exciting Travels Throughout
The New Year.

L'Shana Tova!

Maxine and Gary
Silverstein
and the Staff of

MANN TRAVELS

Carlson Wagonlit Travel



556-8311

or

1-800-343-MANN