

The Charlotte JEWISH news

Vol. 21 No. 5

Iyar-Sivan 5759

May 1999

Shalom Park To Expand!

The Leon Levine Foundation and Anita & Herman Blumenthal Lead \$28 million Capital/Endowment Drive; Harry Swimmer and Hal Levinson Will Chair Campaign

Shelton Gorelick, President of the Foundation of Shalom Park, announced the beginning of a campaign to expand and endow Shalom Park. In all, the initial plans will enlarge the existing facilities from the present 75,000 sq. ft. to more than 180,000 sq. ft.!

The community campaign received an incredible boost from early campaign commitments in excess of \$17 million. As a result of the cornerstone commitment of \$5,000,000 from The Leon Levine Foundation, the Jewish Community Center will be known as the Sandra and Leon Levine Jewish Community Center. A \$5,000,000 founding gift from Anita and Herman Blumenthal and the Blumenthal Family, will create the Blumenthal Jewish Education Center.

The generosity of Lori and Eric Sklut will provide \$2,000,000 to bring into being the Mindy E. Levine Day Camp at the Jewish Community Center. Gorelick was pleased to announce that a \$2,000,000 pledge from Howard Levine will allow us to add a second gymnasium to the Jewish Community Center.

Founding pledges of \$1,000,000 each from the Shelton Gorelick Family and the William Gorelick Family, and \$500,000 from the Ostrow Family will help lead the Campaign to expand and endow Shalom Park toward its \$28 million goal. A full list of campaign commitments appears on page 16.

The Building Committee, chaired by Eric Sklut and Bill Gorelick, has been working with all of the Shalom Park institutions and the architecture firm of Lee, Nichols and Hepler for more than two years to design facilities that will address our community's projected needs. The project will include both renovations to the existing building and the construction of new facilities. The project will have significant impact on the programs and services offered by the Temple Israel Religious School, Temple Beth El Religious School, Jewish Community Center of Charlotte, Jewish Federation of Greater Charlotte, Jewish Day School of Charlotte, Charlotte Jewish Preschool, Carolina Agency for Jewish Education, Jewish Family Service, Consolidated Hebrew High School and the Speizman Jewish Library.

The \$28 million campaign includes approximately \$19 million in construction costs and \$9

million as an endowment for operations. Shelton Gorelick states that, "Both capital and endowment funds are necessary. The existing Shalom Park construction was completed without a mortgage. We must have the funding for construction so we do not compromise the community's future by saddling it with tremendous debt. And, we have to know, up front, that we will have sufficient funds to operate the facilities we build. While the Shalom Park institutions will still

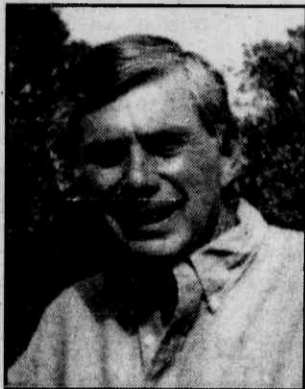
**See pages 16 and 17
for the architectural
rendering of the new
Shalom Park.**

be responsible for much of the yearly operating and upkeep costs, the endowment will provide a large measure of security. Anything less than these actions would leave the bulk of the financial burden to future generations. Our job is to create the fiscal foundation. Our responsibility is to get it done, now!"

Shelton Gorelick is confident that the community will embrace a plan to enable the Charlotte Jewish community to build on the visionary dream that originally resulted in the creation of Shalom Park. The next stage of this evolutionary project will produce a new, creative and dynamic reality fashioned to address the challenges of keeping Jewish life in Charlotte vibrant and inspiring.

Campaign Committee Formed
With the agreement of veteran community leaders Harry Swimmer and Hal Levinson to serve as co-chairmen of the Campaign Committee, Gorelick is sure the campaign will reach its goals.

Swimmer, who has in some way left his mark on almost every aspect of Jewish life in Charlotte, is one of our most revered and respected community leaders. In an almost single-handed fashion, he was the primary force in the original campaign that raised the funds for Shalom Park when it opened in



Harry Swimmer



Hal Levinson

1986. Swimmer has been at the forefront of Jewish community development for over 40 years

Levinson, a native Charlottean and former President of the Jewish Community Center, continues to serve as a valued voice in community planning and is widely acknowledged as someone deeply committed to the diversity of the Charlotte Jewish community.

Together, Swimmer and Levinson represent trust and effectiveness spanning two generations of Charlotte Jewish communal leadership. They have successfully completed the first task of their current assignment by assembling a skilled and energetic Campaign Committee that includes: Gail and John Baron, Lee and Jeff Bierer, Alan and Lee Blumenthal, Tracy and Larry Brown, Michael Cohen, Larry Farber, Roni and Glenn Fishkin, Mickey Gold, Meg Goldstein, Bill Gorelick, Shelton Gorelick, Stacy and Todd Gorelick, Nancy and Bob Kipnis, Karen Knoble and Barry Bobrow, Alan Kronovet, Allie and Eric Lerner, Norm Levin, Daniel Levine, Miles

(Continued on page 27)

1999 Federation Campaign Achieves Goal - Raises \$2 Million!

In an unprecedented show of support, the Jewish community has pledged over \$2 million for the Jewish Federation's 1999 Annual Campaign. Achieving the \$2 million mark is a historic accomplishment for Charlotte and establishes a strong foundation as the community moves into next millennium.

Meg Goldstein, 1999 Annual Campaign Chair, is thrilled with the accomplishment and attributes the campaign's success to a variety of factors.

"Our Major Givers initially established the momentum for the campaign at the Major Gifts event by responding positively when asked to raise their gifts by 25%. We built upon this momentum with the Leonard Nimoy event which was hugely successful. With close to 500 in attendance we were able to effectively tell the Federation story and 80% of those who were present raised their gifts. Additionally, the gala allowed us to broaden the base of Federation donors by garnering 97 new gifts. The '99 Campaign Cabinet also deserves considerable credit for working hard to reach out to those who were unable to attend the gala."



Federation President, Bill Gorelick agrees with Ms. Goldstein that education is the key to the success of the Annual Campaign and that bringing in a major speaker for a Federation community wide event was the winning ticket.

"We have heard overwhelmingly positive feedback about the gala and we were so pleased that the community responded positively to our first effort. It was gratifying to see that when asked the community stopped forward to meet the challenge to provide the dollars that are needed. We should be very proud that we have achieved this historic total."

\$2 million represents an 18% increase over last year's campaign and will make an additional \$300,000 available to be allocated to the Federation's beneficiary agencies.

Special thanks to the following

(Continued on page 20)

Yugoslav Jews Send E-mails to Describe the Crisis They Face

By Ruth E. Gruber

ROME (JTA) - A former leader of the Yugoslav Jewish community plays tennis with a group of friends two times a week in Belgrade.

When they play now, the men wear bull's-eye targets pinned to their backs — a symbol worn by Yugoslav citizens protesting NATO bombs.

Last week they had to cut short a game because of an air raid siren, but despite the bombing the games "will probably go on," he quipped by e-mail, "as long as the tennis courts are intact - or as long as we are intact."

This man, like most people contacted for this story, asked that his name not be used. He added: "I still feel that this is surreal. I still cannot believe all this is happening. OK, I do, but not yet 100%. I suppose people in Beirut, Sarajevo and perhaps Vietnam, for

that matter felt the same way."

NATO's ongoing air war against Yugoslav President Slobodan Milosevic's campaign against ethnic Albanians in Kosovo has placed Yugoslavia's 3,000 Jews,

The Federation has established the Kosovo Relief Fund to purchase food, clothing, medicine and other humanitarian needs. Checks can be mailed to the Kosovar Relief Fund c/o the Jewish Federation of Greater Charlotte.

most of whom live in Belgrade, in much the same crisis as that faced by their fellow countrymen.

Yugoslavia's Jews are well integrated into mainstream society, and they share the same concerns, frustrations and fears - as well as the same black humor - experienced by their fellow citizens as they try to carry on their daily lives.

"Our worries are the same, and our troubles, too," said one Belgrade Jewish man, communi-

(Continued on page 4)



**Connecting Families
Sustaining Tradition**

SHALOM PARK

Inside this issue . . .

Shalom Park Expansion Story . . . pp. 1 & 23

Read About the New Shalom Park Plans

New Shalom Park Architectural Rendering . . . pg. 16 - 17

See How the New Park Will Look

Shavuot . . . pp. 19 - 22

Stories, Announcements and Recipes

Also inside . . .

Federation News	page 4
Jewish Family Services	page 7
Temple Beth El	page 8
Temple Israel	page 9
Lubavitch of North Carolina	page 10
Women's Page	page 12
CAJE	page 13
Speizman Jewish Library	page 14
The Jewish Traveler	page 15
Dining Out	page 24-26
Jewish Community Center	page 30-31