

# be mine



Platinum dinner ring featuring one 2.32 carat emerald-cut ruby flanked by two old European-cut diamonds, all bezel set in a vintage-inspired, pierced-bar mounting. **Price upon request.**

## Perry's pays even more for your designer and antique pieces.

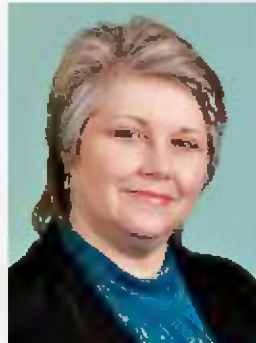
We have purchased more than \$20 million in fine jewelry and coins from customers like you in the past year! With more than 12 Graduate Gemologists on our staff and 12 private offices, we will help you get the most value for your items. **We buy Tiffany & Co., Cartier, Van Cleef & Arpels, David Yurman, John Hardy, and more!**

**Sell today and rest easy tomorrow.**

Call **704.364.1381** to schedule an appointment or stop by Perry's during store hours.



Brian Filer  
Graduate Gemologist



Holly Nester  
Graduate Gemologist



Mike McChesney  
Graduate Gemologist

Other buyers are only interested in paying scrap price to melt down your items, meaning you'll ultimately be paid less for your precious jewelry. **Sell your jewelry to Perry's to get more money!**

6525 Morrison Blvd. Charlotte, NC 28211 Store Hours: Mon-Sat 10-6, Thurs 10-7  
[www.perrysjewelry.com](http://www.perrysjewelry.com) • 704.364.1391 • 800.339.0734



**Immediate payment  
or a Perry's store  
credit worth at least  
125% of the value.\***

\*Some restrictions apply.  
See store for details.

# PERRY'S

*Fine, Antique & Estate Jewelry*

**Wow, what a find!**