

**Standings**

**VOLLEYBALL**

Team	Won	Lost	Pct.
Firestone	33	6	.846
Modena	30	9	.769
Salvation Army	30	9	.769
Parkdale	18	18	.500
Optimist	15	21	.417
Red Shield	12	24	.333
Dixon	12	24	.333
Smyre	0	39	.000

(Games thru Monday, October 27)

**LITTLE LEAGUE BOWLING**

Firestone	9	0	1.000
Red Shield	4	5	.444
Recreation Center	4	5	.444
Optimist	1	8	.111

(Games thru Saturday, October 25)

**LADIES PIONEER BOWLING LEAGUE**

Cohens	11	4	.733
Groves	9	6	.600
Thread Rockets	9	6	.600
Morris Glass	8	7	.533
Thread Rebels	8	7	.533
Firestone	0	15	.000

(Games thru Wednesday, Oct. 22)

**AMERICAN BOWLING LEAGUE**

Yankees	7	2	.778
Knox Sandwich	7	2	.778
Dodgers	5	4	.556
Carolina Cleaners	4	5	.444
Firestone	2	7	.222
Farm Bureau	2	7	.222

(Games thru Thursday, Oct. 23)

**Schedules**

(Continued from Page 2)

**Second Shift Billiard League**

Fri., Nov. 7, Carding vs Twisting  
 Mon., Nov. 10, Carding vs Spinning  
 Fri., Nov. 14, Weaving vs Twisting  
 Mon., Nov. 17, Weaving vs Carding  
 Fri., Nov. 21, Twisting vs Spinning  
 (All games at 1:00 A. M.)

**Second Shift Bowling League**

Thurs., Nov. 6, Weaving vs Twisting  
 Tues., Nov. 11, Carding vs Twisting  
 Thurs., Nov. 13, Spinning vs Weaving  
 Tues., Nov. 18, Twisting vs Spinning  
 Thurs., Nov. 20, Weaving vs Carding  
 (All games at 10:30 A. M.)

**Little League Bowling**

Sat., Nov. 8, Firestone vs Optimist  
 Sat., Nov. 15, Firestone vs Recreation Center  
 Sat., Nov. 22, Firestone vs Red Shield  
 (All games at Recreation Bowl 10:00 A. M.)

**Ladies Pioneer Bowling League**

Wed., Nov. 5, Firestone vs Morris Glass  
 Wed., Nov. 12, Firestone vs Groves Thread  
 Wed., Nov. 19, Firestone vs Thread Rocketts  
 (All games at Recreation Bowl 6:00 P. M.)

**American Bowling League**

Thurs., Nov. 6, Firestone vs Carolina Cleaners  
 Thurs., Nov. 13, Firestone vs Dodgers  
 Thurs., Nov. 20, Firestone vs Rockets  
 (All games at Recreation Bowl 8:15 P. M.)

**Bingo Parties**

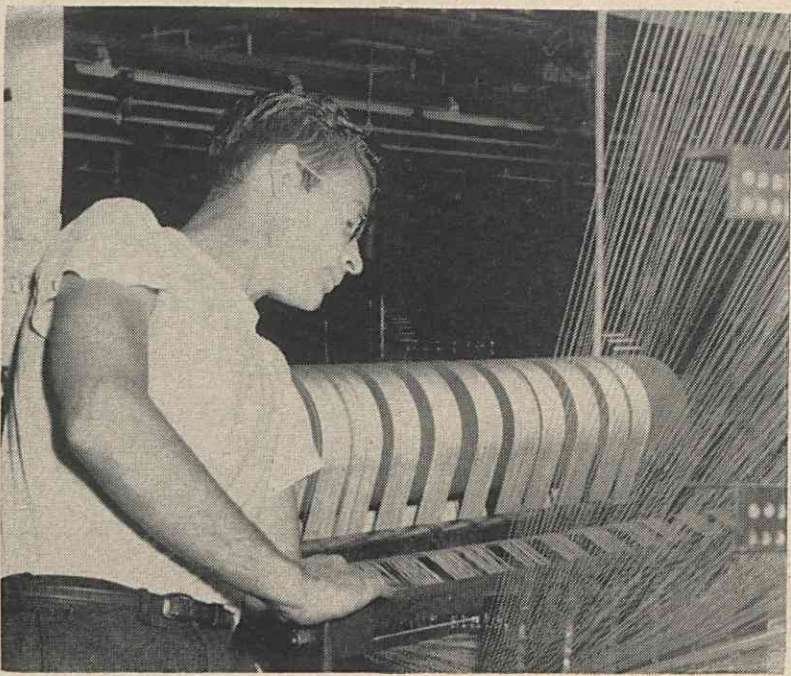
Thurs., Nov. 13, Girls Club  
 10:00 A. M. and 7:00 P. M.

**Ceramics**

Classes each Monday  
 10:00 A. M. and 7:00 P. M.

**Know Your Plant. . .**

**CORD AND CHAFER FABRIC ARE END PRODUCTS FOR PLANT**

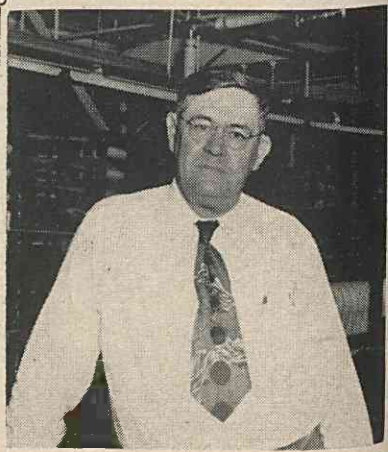


MILTON GOINS, weaver, makes an adjustment on a cord loom. The cord fabric he is making has three picks, or ends of filling yarn, inserted per inch. Cord fabric has great strength lengthwise; is intended to have little or none sidewise.

CORD AND CHAFER FABRIC are the two chief concerns of Overseer Russell Conrad and his 200 Weaving Department employees. About the only feature these two fabrics have in common is the fact that they're both woven fabrics. Otherwise they are very different products.

The major difference in cord and chaffer fabric is the fact that the cord is made of synthetic yarns; whereas the chaffer fabric is made of cotton yarns. Other differences: Cord is prepared in the Twisting Department after being received from the manufacturer of the synthetic yarn and prior to being woven. There it is made into cable (several ends twisted together) and sent to the Weaving Department on spools. In the case of single yarn chaffer fabric, the single yarn enters the weaving department on section beams from Spooling and is put through the slasher process before being woven. In slashing the yarn is taken from the section beam, run through a "size", a solution of starch and oils which adds a protective coating to the yarn—preventing it from fraying apart when woven. After drying the sized yarn is put on a loom beam and is ready to be woven into single yarn chaffer fabric or Osnaburg, as it is also called. A small amount of ply yarn chaffer is also produced, in which case the yarn goes directly from Twisting to Weaving without slashing.

Another, and perhaps the most obvious difference in cord and chaffer fabric is the fact that chaffer is a square woven product having practically equal strength lengthwise and widthwise. Cord fabric



OVERSEER RUSSELL CONRAD

is designed to have tremendous strength lengthwise (along the line of the cable cords) and none to speak of along its width or filling. In fact the small amount of filling in cord fabric is there only to keep the cord fabric intact until it is made into a tire.

Approximately six sizes of cable cord enters the Weaving Department—its size determining the style fabric it will be made into. The first operation at the loom in the production of cord fabric is creeling in; meaning to replace empty, or near-empty spools with full spools of yarn. Following the creeling comes tying-in, knot-pulling, inspection of creel, and weaving in that order.

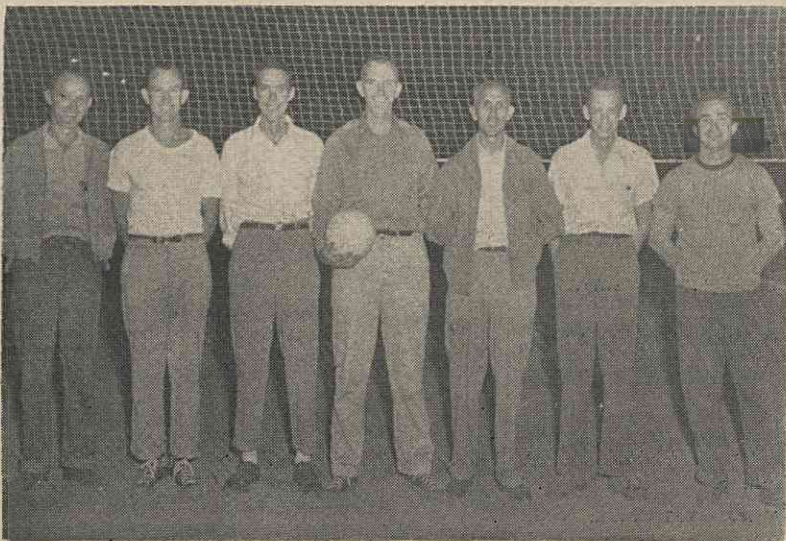
It takes seven hours to weave an average sized roll of cord fabric, which would contain 1000 yards of fabric, be 61" in width, and weigh 1100 pounds. After the roll is completed on the loom, it goes to balers where it is wrapped in water-proof burlap, banded and transferred to the Warehouse for storage and shipment.

**Students See Hobby Show**



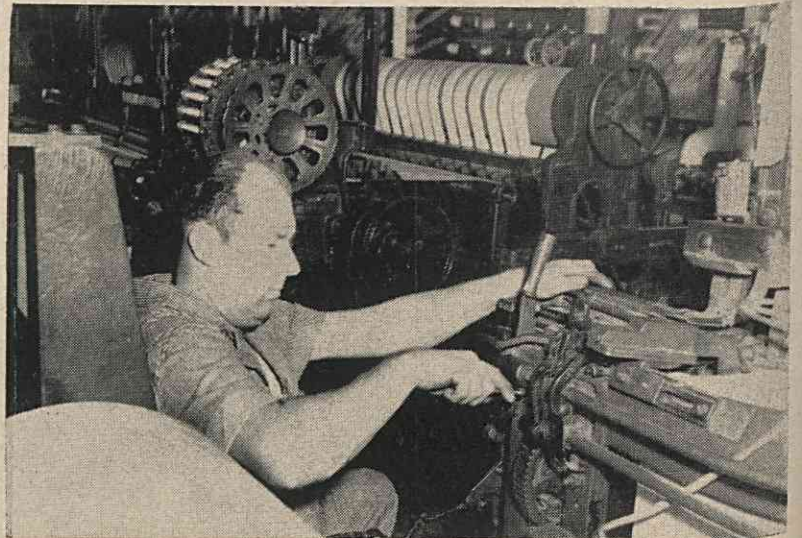
LOOKING over the antique china exhibit are members of the Arlington Junior High School. Other schools that saw the Hobby Show en masse were Arlington Elementary and Abernethy Elementary.

**Firestone Champions**



MEMBERS of Firestone's league leading volleyball team are, left to right, Burnette Spencer, Alvin Riley, Roland Conrad, Captain Sam Honeycutt, Reid Deal, Kirk Sanders, and Lynn Atkinson. This team plays in the Recreation Volley Ball League at Todd Field.

<b>Ladies Bowling League</b>	Thurs., Nov. 13, Weaving-Twisting vs Spinning-General
Tues., Nov. 4, Weaving-Twisting vs Main Office	Tues., Nov. 18, Weaving-Twisting vs Spooling
Thurs., Nov. 6, Spinning-General vs Spooling	Thurs., Nov. 20, Main Office vs Spinning-General
Tues., Nov. 11, Main Office vs Spooling	(All games at 6:30 P. M.)



A HIGH DEGREE of mechanical skill is needed to keep looms operating properly. That skill is provided by loom fixers for the most part. William Murray, above, has spent years learning this skill, and like most fixers would agree that one never learns all there is to know about the job.

SEC. 34.66 P. L. & R.  
 U. S. POSTAGE  
 PAID  
 GASTONIA, N. C.  
 PERMIT NO. 29