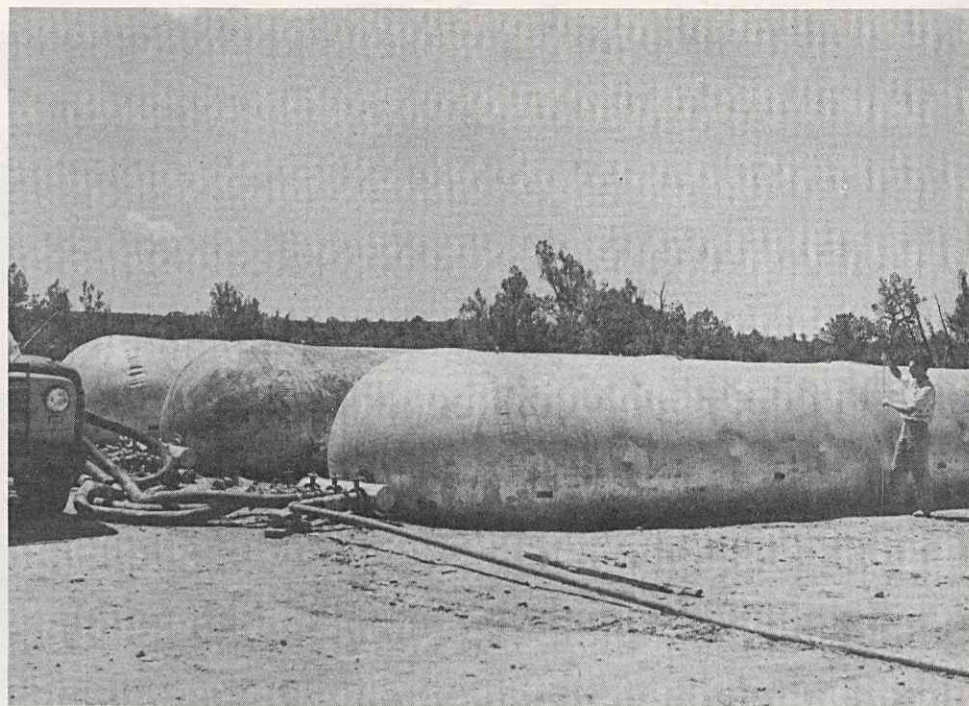


ADDITIONS TO and improvements in plants and equipment amounted to \$58,570,529. Major additions were made to our plants at home and abroad. Pictured above is a new Bag-O-Matic line at the Memphis, Tennessee, plant.



A NEW PLANT for the manufacture of coated fabric products was established at Magnolia, Arkansas. Giant collapsible rubber tanks like those above are manufactured at the plant and are designed for oil, water or other liquids.

Address to Stockholders

(Continued From Page 2)

Our Company maintained its position as the world's largest producer of rubber. Production of natural rubber was again increased on the Firestone plantations in Liberia and on our research plantation in Guatemala. More than 1200 acres of rubber trees were planted on our new plantation in Brazil, and surveys are now in progress to find a suitable site for our projected rubber plantation in the Philippines. Our program of replanting our Liberian plantations with higher-yielding rubber trees is proceeding on schedule.

The Firestone Plantations Company was chosen by the National Planning Association for its fifth study of the performance of an American business abroad. The Association made a detailed, on-the-spot inquiry into the operations of the Plantations Company in Liberia and the effect of these operations on the social, economic and political life of the country, and it highly commends our Company for its Liberian operations.

Coral rubber, a new synthetic developed by Firestone research, which has characteristics similar to that of natural rubber, has proved so successful in truck tires tested by the Army Ordnance Department that it may eliminate the need for costly stockpiling of natural rubber and make the United States, in case of an emergency, completely independent of foreign sources of rubber.

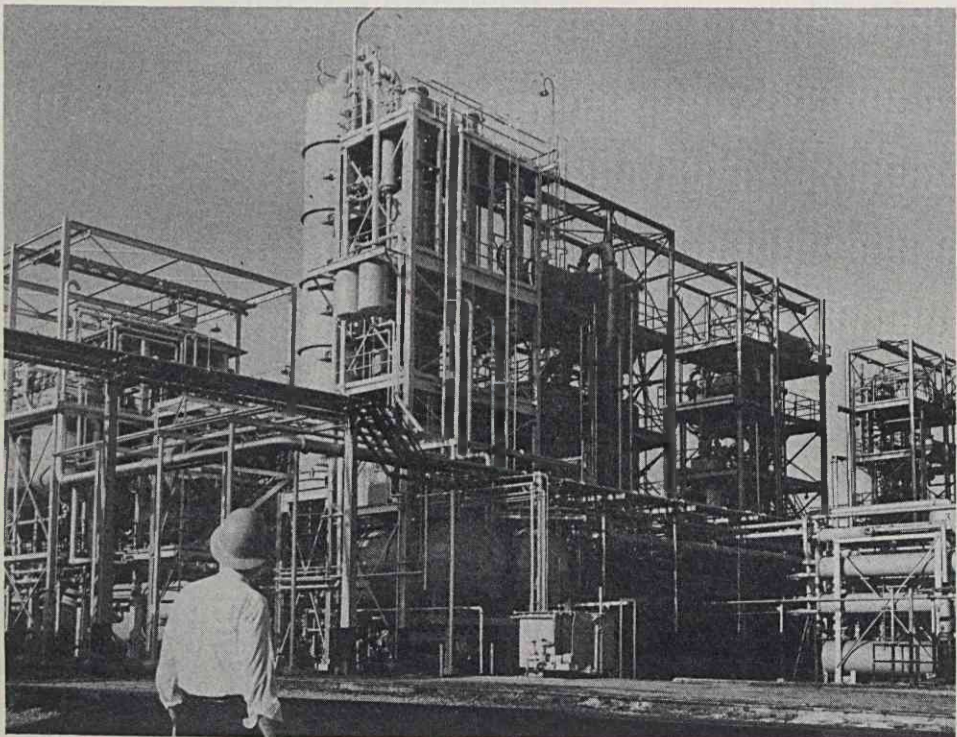
Again, last year, Firestone tires were on the winning cars in all national championship race car events and in most stock car and sports car races. For the thirty-third consecutive time, Firestone tires were on the winning car in the 500-mile Indianapolis sweepstakes, and for the twenty-eighth consecutive time on the car which won the Pikes Peak Climb.

THE COVER --

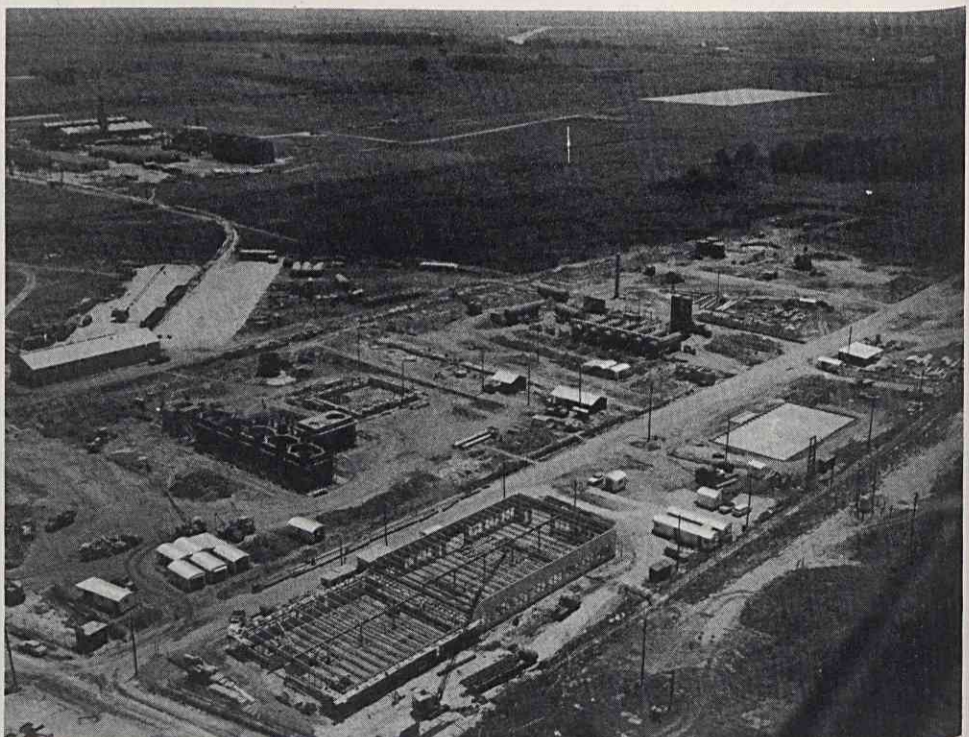
The adoption of fourteen-inch wheels by most of the passenger car manufacturers for their 1957 models necessitated extensive mechanical changes in all of our domestic tire factories. Pictured on the cover is a scene in the warehouse at the Memphis, Tennessee, plant where workmen give passenger car tires one last inspection before placing them on wooden pallets for storage until they are shipped to automobile manufacturers and other customers.



EXPANDED CAPACITY and improvements in processing equipment were provided for the production of natural and synthetic rubber. The trade mark FR-S identifies the top quality synthetic rubber made by the company.



THE PRODUCTION capacities of our synthetic rubber plants at Lake Charles, Louisiana, and Akron, Ohio, have been substantially increased. When these plants were purchased from the Government in 1955, they had a combined capacity of 129,600 long tons. When the present expansion program is completed this year, capacity will be 230,000 long tons.



TO HELP SUPPLY the synthetic rubber plants, a new plant for the manufacture of butadiene, a principal raw material of synthetic rubber, is under construction as the first unit of a new Firestone petrochemical center which is being established on a 1,000-acre site at Orange, Texas. The Company also has a financial interest in a synthetic rubber plant now under construction in England.