

WHILE OTHERS SLEEP . . .

900 Men, Women Work At Night

"MOST glorious night, Thou wert not sent for slumber." This sentiment was expressed by the famous English poet, Lord Byron.

This, too, is the feeling of many Firestone Textiles people who work during hours of darkness on the second and third shifts.

Every day at 3 p.m. and 11 p.m., Monday through Friday and usually on Sundays beginning at 11 p.m., approximately 900 employees pass through the plant gates to put in their "day's" work.

Night at Firestone is no "quiet time." Those who work during the day would be surprised to see the traffic and activity in and around the plant during the second and third shifts.

WHILE the shades of night are drawn, production of fabric for the Company's tire plants and sales yarn products for the outside market continues to 7 a.m., when the first shift begins.

Of the Cotton Division, carding, spinning, spooling, winding and weaving operations continue through the night and around the clock. In the Synthetic Division, twisting, splicing, weaving and plastic dip treating continue through the night.

Too, there is the Quality Control department, keeping constant watch over materials as they roll from the production lines. A laboratory technician is on hand until the end of the second shift, and inspectors are on the floor 24 hours a day.

In the mechanical department a "skeleton" maintenance crew is on hand to keep machinery and equipment on-the-go. And don't overlook the oiler, who goes from machine to machine, putting "smoothness" into every moving part.

The Refreshment Service operates its wagons two complete rounds on the second and third shifts.

OUTSIDE and inside the plant are the loading and unloading crews and the men who handle materials on the production lines.

—More on Page 3



THE ROAR OF MACHINERY fills the air and the pace of production continues through the night. Fluorescent lamps light the way as the Firestone Textiles plant keeps its flow of products on the road to the Company tire plants and outside sales.



INCOMING synthetic filament, bought from suppliers, begins long journey through twisting, winding, spooling and weaving processes. It will emerge as fabric that helps give Firestone tires their long-wearing, safety features. Here, William Holton, fork truck operator, transports beams from warehouse to plant.



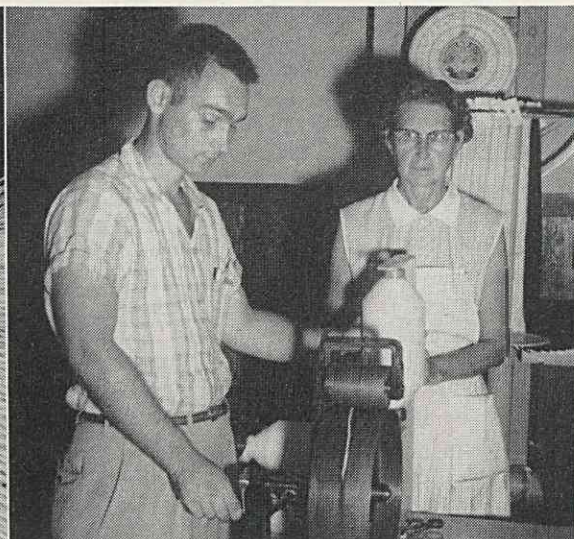
SPLICING synthetic cord with automatic sewing machine: Marjorie Anderson, on third shift for ten years.



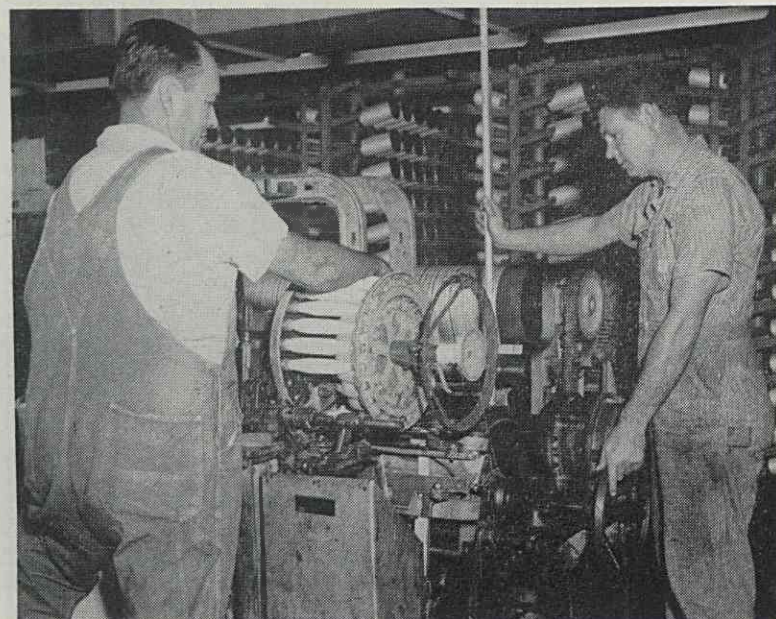
FIRST AID is a 24-hour service. Frances Wilson, second shift nurse, helps Kenneth Bell, Ply Twisting doffer.



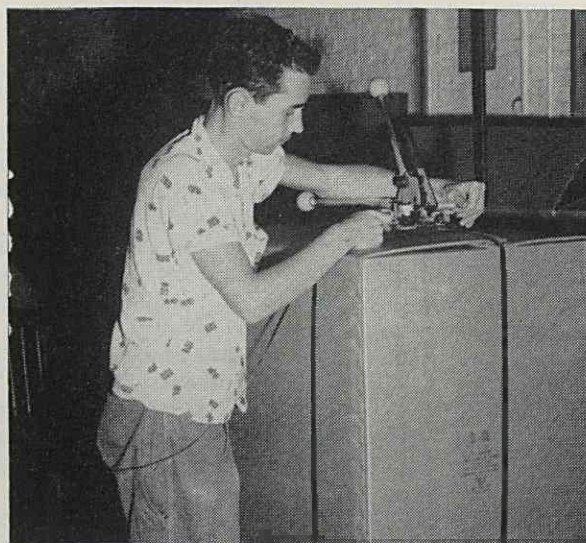
YARN must be transferred from packages to large beams, to go to looms for weaving into fabric. Cloe McDaniel, third shift for five years, operates warper.



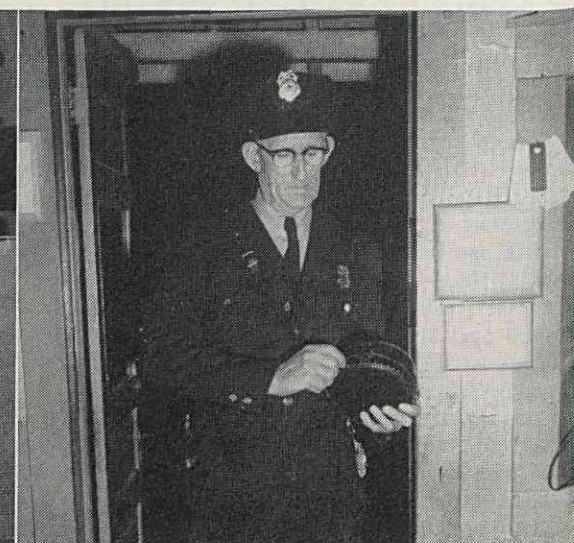
QUALITY Control lab testing goes on until 11 p.m. William Roberts checks roving. Nettie Thomas, Twisting inspector, watches. Inspecting continues all night.



LOOM FIXERS are on the job around the clock, to keep machines turning out top-quality tire fabric. James Isenhour (right), five years on third shift, makes adjustments on one of the looms attended by 15-year, third-shift weaver, James Dobbins.



MATERIALS for outside market are produced all night long. Edward Matthews, third shift Sales Winding, readies a package for shipment.



PROTECTION is especially vital at night. Watchman Dave Smith prepares clock for routine trip through his third-shift territory.