

TRAINER FLOWN 12,000 HOURS, NEVER OFF GROUND

Flown over 12,000 hours and never off the ground.

That's the remarkable record of the Link Trainer, land-bound airplane-cockpit used by Piedmont Airline pilots for their continued proficiency in instrument and in "blind flying".

The Trainer, operated by Piedmont Aviation, Inc. for the airline pilots and instrument students is operated by Miss Hop Hee Dunne, who has been in charge of this phase of work in Winston-Salem for three and one-half years.

Miss Dunne has an impressive background of training, having taught at the Academy of Aeronautics in San Francisco, instructing in Link Trainer, Navigation and Meteorology before coming to Piedmont. Prior to that time she was in the weather forecasting department for American Airlines in Chicago.

All Piedmont Airline pilots are required to make regular periodic flights in the Trainer, and in addition to the airline personnel, Miss Dunne has instrument students who start from the beginning and learn blind flying. The Trainer department of the fixed base operations is also approved for ATR training.

The accompanying pictures show the Trainer in operation, with Miss Dunne giving a student an instrument problem. The trainer, looking like a clipped and pushed together small airplane, as shown in the top photo, is balanced by air when the power is on, and sits on air furnished by four bellows.

The instruments in the cockpit, including the gyro, operate by vacuum just like on the airplanes, and the electrical instruments operate just like the airplane cockpit. The Trainer is a single engine craft, and can be given rough air, wind drift and all simulated actual conditions.

In the upper right photo, Miss Dunne is observing the progress of the flight as the student flies his problem, with the machine in the left foreground drawing a miniature pattern just as the ship flies. Miss Dunne also manipulates the controls for the various stations in the link and applies rough air and other conditions.

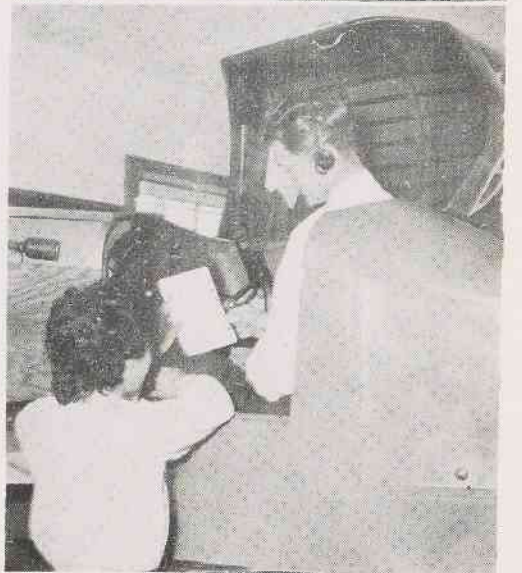
At lower right, the instructor is explaining the problem and airport where the blind landing will be simulated.

Charts giving compass headings, radio bearings, and other information are used by the pilots and the students.

PAI PIN-UPS

Bill Mabe of Fixed Base Stockroom No. 2 is the very proud father of a new baby daughter, Deborah Jan, born October 15th, and weighing 8 lbs., 9 ozs.

The average girl needs more beauty than brains because the average man can see better than he can think.



FUND DRIVE SUCCESS

The 1953 United Fund campaign has come to a close with a total contribution from Winston-Salem employees of \$2632.50, an increase of 26 per cent over last year. 71 per cent of INT employees contributed for an average of \$9.40 each.

Special congratulations are due the general office, accounting, accessory overhaul, inspection and the pilots who had 100 per cent participation in the drive.

This is the largest percentage of employees contributing that we have ever had, and we would like to thank all solicitors for their splendid cooperation and hard work.
