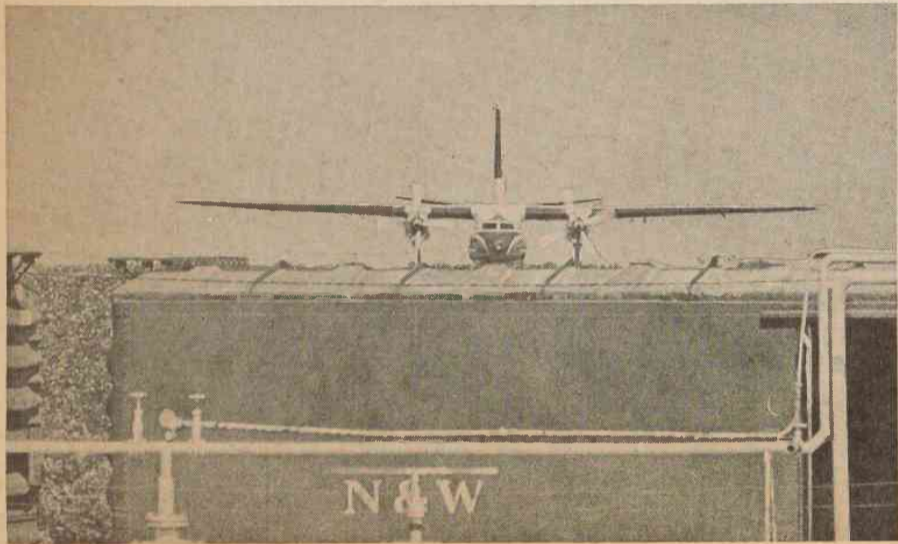


Piedmonitor Pix



IT'S A TRAIN, IT'S A PLANE — It's both! The maintenance ramp at INT stretches toward a frequently used railroad track. Looking eastward across the tracks it often appears that the Piedmont planes and the N&W trains are playing games. Waiting for Superman perhaps.



WHITE CHRISTMAS EVE — Charlottesville Agent Mark Trail puts pins in to hold the gear. The snow fell on Christmas Eve and grounded the flight. Shown below are Capt. E. L. McMillan, F/O L. G. Hieronymus and F/A Pat Markunas who spent most of the night getting back to INT by train.



NO PEPSI'S ON BOARD — Anita Bryant didn't seem to mind. She posed here as she passed through Roanoke in route to a convention at White Sulphur Springs, West Virginia via Piedmont not long ago.



ROA HUNTER — Mickey Overstreet, at left, is showing off the 17 pound, 11 ounce turkey he bagged recently in typical Roanoke style.



THE SHIRT TAIL CUTTING — Margie Pullen is shown here just after making her first solo flight. She's the wife of pilot Ed Pullen who is now on active duty with the U. S. Army. The traditional cutting ceremonies took place at the Rocky Mount airport recently with her father-in-law E. F. Pullen, who taught her to fly, doing the cutting.