

LONG LINES

Since Piedmont's long line is one of, if not the most, successful of our modes of communication, we thought a column by the same name might be a good way of mentioning some of the small, but newsy things of interest that go on around the system. Any contributions you might have will be more than welcome. Address them to the Editor, Piedmonitor, INT-ZY.

Rocky Mount has a new airport. Piedmont switched its service to the just completed facility in mid-March. It is located about seven miles west of Rocky Mount, less than ten miles from the site of the old terminal. The new airport comes under the responsibility of the Rocky Mount-Wilson Airport Authority, which is composed of the cities of Rocky Mount and Wilson and Nash, Wilson and Edgecombe counties.

Jim Lockamy, former Piedmont Sales Rep in Nashville, has transferred to Newark to open a new Piedmont Sales Office there.

Merrill Gadker of Cincinnati reports that North Central has joined the list of carriers serving Greater CVG! He also mentioned that the Reds started baseball season off with a bang. If anyone is interested in a schedule of home games just let Merrill know.

The final selection has been made for the location of Piedmont's permanent Central Res Office. Construction has begun west of Winston-Salem at a site on Griffith Road, which is just off Stratford Road, if you're familiar with the city. We'll keep you posted on the progress.

Roanoke reports they've had lots of VIP's coming through lately. Their list included New Zealand's Ambassador to the U. S. Frank Corner, Miss Rodeo USA, Diana Flynn from Tulsa also passed through as did Eddie Albert of TV's "Green Acres". ROA ops tell us they've revived the Piedmont Pacemakers. Their softball team made an admirable showing last year by winning more than half of their scheduled games. They're looking for an even better season this time around.

If you're calling the Credit Union these days don't hang up too soon. Everybody's friend Freda (Zappia) hasn't gone but she has changed her name. Freda is now Mrs. James Borden. Her husband Jim is a Piedmont radio technician.

We noticed in a recent issue of the Aviation Daily that Piedmont had the second highest load factor among all the local carriers for 1969. Ours was 46.6%. Only Mohawk was higher with 47.4%

Interesting Interlining

YOU'RE CLEARED TO LAND says the brochure for the 6th Annual Miami Interline Club's International Spring Festival. The holiday week-end exclusively for airline personnel will be held this year at the Carillon Hotel in Miami Beach. The dates are May 7th-9th and the rates are \$16 and \$23 for double and single rooms, including breakfast and dinner. For reservations or further information write to Mr. Jack Wofford at the Carillon Hotel, Ocean at 68th Street, Miami Beach, Florida 33141.

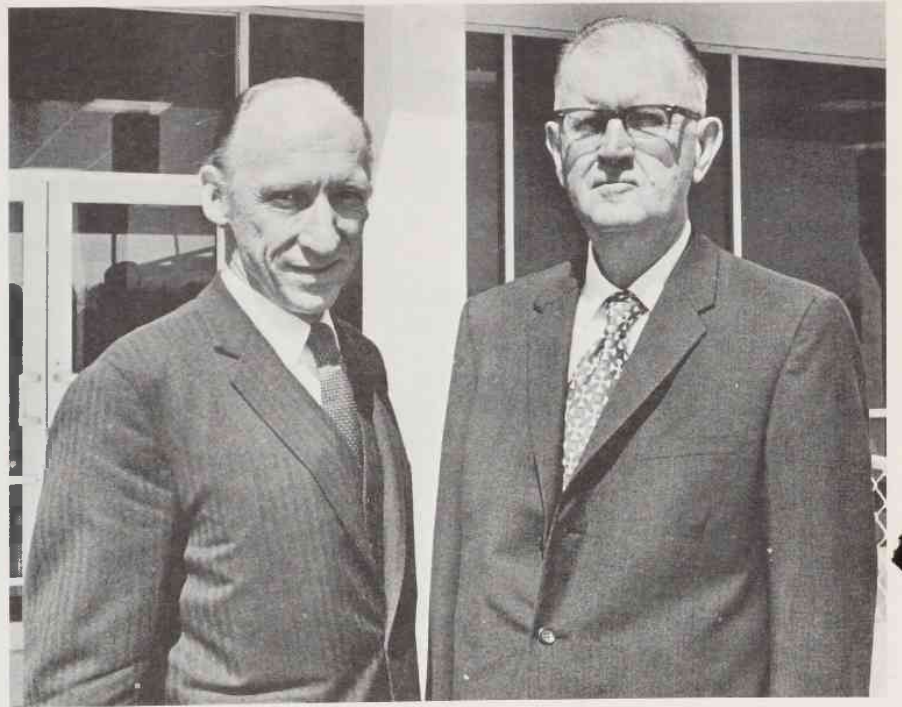
FLAGSHIP HOTELS, a subsidiary of American Airlines, has announced a new discount rate policy for Piedmont employees. In season cuts of 25% off the regular posted rates and off-season discounts of 50% on rooms will be allowed for employees traveling on vacation. These discounts are for room only and do not apply to any other services. They are subject to availability at time of requests which must be made in writing well in advance specifying dates and preferences. The Piedmonitor office has a complete listing of the hotels if you need further information.

BARGAINS IN HAWAII include a special rate of \$12 at the Keauhou Beach Hotel at Keauhou-Kona starting August 15th, the opening date for the newest on the Island Holiday Resort Hotels. If you're going that way between August and December and wish to apply for the special rate you should write on Company letterhead to Island Holidays Resorts, P. O. Box 8519, Honolulu, Hawaii 96815. The Keauhou Beach Hotel is located four miles from the village of Kailua-Kona and will offer complete facilities including restaurants, swimming pools, bars, convention facilities and an extensive sandy beach. It's the first hotel to be constructed in the Keauhou-Kona development and is adjacent to the 18-hole golf course which borders and overlooks the picturesque Kona Coast.

PROBABLY THE BEST INTERLINE bargain we've seen is the new "Get-Into-This-World" interline fare offering from Pam Am. Their new reduced rate policy is an 80% reduction on a confirmed space basis. It applies to economy and third classes only and the solitary stipulation is that reservations must be booked within 30 days of departure. When booking reservations you must identify yourself as an airline employee intending to travel on the 80% discount fare. You must submit a signed off-line pass request to the Pass Department — INT ZZ at least two weeks in advance of your trip. Eligibility includes employee, spouse, dependent children and your parents.

P
I
E
D
M
O
N
I
T
O
R

P
I
X



ON THE OCCASION of the opening of Rocky Mount's new airport, President Davis, at left, had a chance to chat with Ray Bandy, who is chairman of the Rocky Mount-Wilson Airport Authority. Further details of the opening are mentioned in the Long Lines Column, at the left on this page.



MORE FESTIVAL GOERS are shown just prior to boarding in Greensboro for their Piedmont flight to the Azalea City. Sax player Boots Randolph, center, is greeting several Western Electric Wenoca Queens. The girls are, from left, Ruth Ballard, Jun Smith, Sharon Bolling, Delores McMannen and Carolyn McKinney.



A ROYAL WELCOME awaited titled visitors to New Bern. Lord and Lady Tryon, second and third from left, came to New Bern as guests of the Tryon Palace Commission for their spring meeting. Tryon Palace is the restored Colonial Capitol and Governor's residence built in 1767-70. Piedmont people on hand to greet the Tryons were Sales Rep Mike Mason, at left, EWN Manager Bob Beard, second from right, and Agent Sylvia Willis. The Tryon Palace restoration is located in New Bern.