

Congratulations

30 Years

R. V. Moore—Agent, ATL
F. J. Slone—Station Manager, RWI

25 Years

W. C. Yates—Sr. Shipping Clerk, INT-FB
L. R. Pickel—Supervisor, TRI
G. W. Hurst—Dispatcher, INT
E. H. Durham—Foreman, INT

20 Years

L. H. Jones—Agent, DFW
J. H. Young—Agent, CRW
T. R. Durrer—Agent, CHO
J. B. Snider—Mechanic, INT
M. H. Collins—Mechanic, INT
M. H. Hanes—Mechanic, INT
W. A. Downs—Agent, ISO
J. J. Archer, Jr.—Station Chief, CVG
P. C. Freeze—Mechanic, INT
H. J. Hall—Lead Mechanic, INT
J. F. Flippin—Mechanic, INT
C. J. Reynolds—Mechanic, INT
R. J. Edney—Lead Mechanic, INT
J. E. Davis—Lead Mechanic, CVG

15 Years

M. D. Marion—Supervisor, INT
R. L. Mosser—Mechanic
J. R. Nelson—Captain, INT
B. J. Spencer—Senior Agent, CRO

10 Years

R. M. Alliegro—Agent, MYR
H. T. Fowler—Agent, ILM
P. D. Christie—Assistant Secretary, INT
R. E. Merritt—Agent, AVL
B. H. Booher—Data Entry Operator, INT
C. D. Carwile—Agent, LYH
T. E. Cahoon—Agent, RIC
A. H. Broughton, Jr.—Agent, RDU
D. L. Lewis, Jr.—Agent, EWN
N. M. Crosby—Flight Attendant, INT

P. F. Howard—Flight Attendant, ORF
J. A. Lamade—Flight Attendant, ATL
G. J. Mitchell—Flight Attendant, ORF
A. R. Throckmorton—Flight Attendant, ATL
E. Trent—Flight Attendant, ROA
M. S. Masterson—Flight Attendant, DCA
N. V. Tongel—Flight Attendant, ORF
J. B. Trader—Flight Attendant, INT
D. B. Goolsby—Supervisor, CRO
W. K. Spilleth—Agent, LNG
S. Tyler—Line Serviceman, ORF-FB
T. L. Ellington—Assistant Manager-Reservations Sales, CRO
G. K. Baggett—Operations Controller, ORF

5 Years

W. E. Yaden—Agent, SDF
M. B. Linville—Sr. Programmer, INT
D. A. Flack—Secretary, LGA
L. K. Crouch—Secretary, ROA
T. R. Hurlocker—Shop Supervisor, ROA-FB
A. N. Dumlao—Fleet Service, ROA
S. D. Weisner—General Accounting Clerk, INT
F. T. Roundtree—Clerk Typist, INT
J. P. Reynolds—Chief Inspector, ROA-FB
M. C. Armas—Secretary, NYC-C
D. R. Tom—Flight Instructor, ORF-FB
T. W. Underwood—Stock Clerk, INT
T. L. Wooldridge—Agent, LYH
C. S. Easter, Jr.—Agent, INT
M. L. Raynor—Agent, ISO
F. L. Benson—Agent, MIA
J. C. Howard—Senior Agent, CRO
V. R. Creekmore—Secretary, ATL
K. K. Sloop—Senior Typist, INT
R. S. Haymore—Data Entry Operator, INT
P. M. Cloud—Data Entry Operator, INT
C. H. Colville—Data Entry Operator, INT
D. G. Hyatt—Senior Res Agent, CRO
P. G. Hanes—Agent, CRO
A. Morgan—Agent, BOS

W. K. Scott, INT to ATL
C. F. Allen, EWR to LGA
J. M. Souther, RIC to AVL
B. B. Robbins, ROA to INT
C. B. Edwards, Jr., INT to ORF
L. V. Zettwoch, ROA to ORF
J. D. Sheorn, ROA to ORF
L. D. Wohker, ILM to INT
L. G. Perry, DCA to INT
L. H. Dorman, INT to ATL
J. P. Odum, INT to ATL
R. A. Yontz, INT to TYS
K. J. Delancey, ILM to ROA
J. Miller, Jr., TRI to INT
B. J. Harwell, INT to GSO
B. P. Hollis, ORF to DCA
C. Gray, INT to DCA
K. J. Torrence, CLT to ORF
J. A. Harveston, TYS to ORF
B. G. Kirby, LWB to ORF
D. K. Freeland, BKW to GSO
J. M. Walters, ROA to DCA
J. D. Bennett, CAE to BNA
S. B. Price, GSO to ORF
P. G. Carmichael, GSO to ORF
P. K. Bivens, ROA to DCA
R. C. Aliff, ROA to DCA
W. R. English, Jr., ILM to FAY
D. C. Reid, ROA to ORF
T. M. Curtis, ROA to DCA
R. E. Smith, FAY to INT
S. I. Grady, ISO to RDU
D. P. Keyser, RIC to LWB
J. M. Truell, INT to CLT
W. B. Owens, LWB to ORD
L. D. Riggs, GSO to HTS
A. L. Wright, INT to GSO
M. D. Spence, RIC to INT
B. R. Daniels, FLO to GSO
J. W. Vaughan, ILM to ORF
L. H. Dorman, ATL to INT
R. A. Arzonice, INT to ATL
M. D. Semones, ROA to ORF

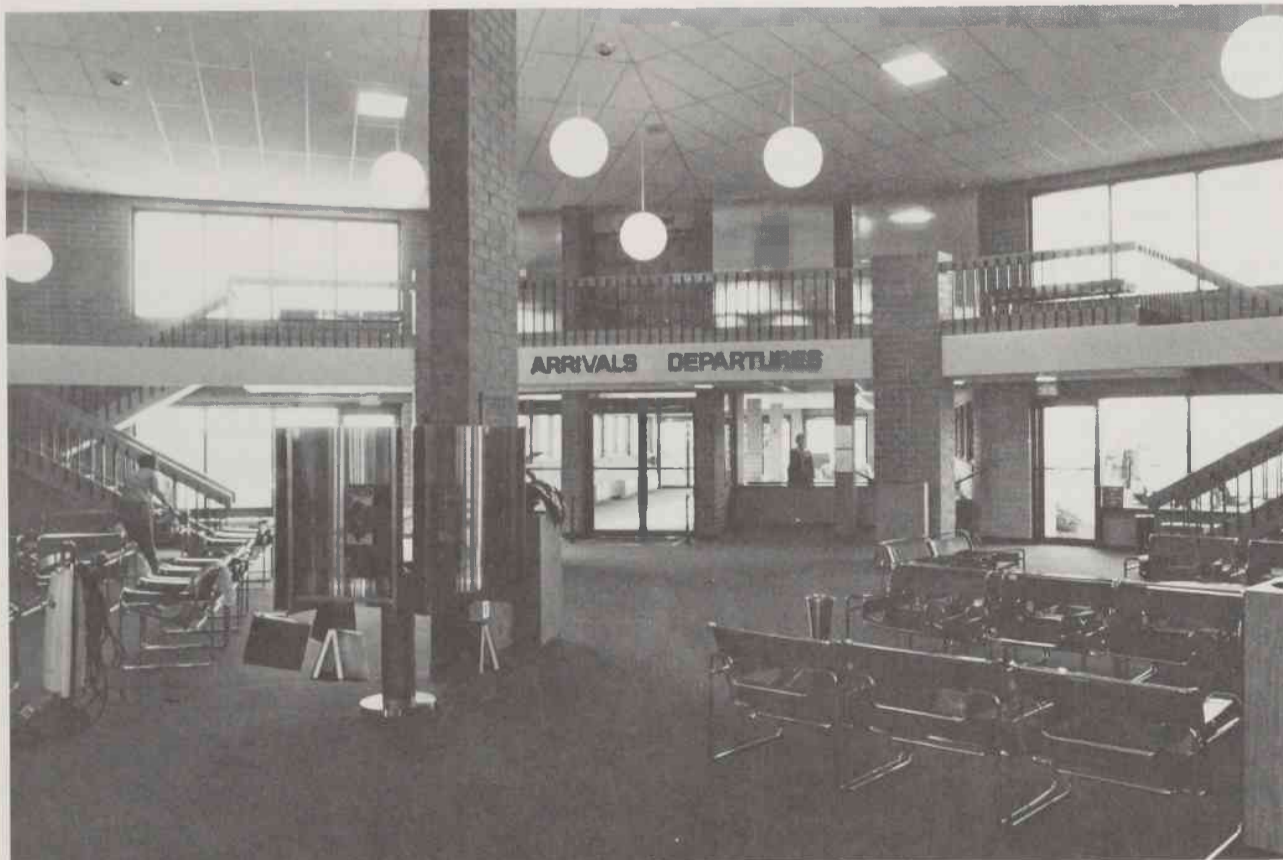
Around the system

Transfers

C. C. Pecora, FAY to CLT
S. D. Hutt, ROA to MYR
C. R. Ashley, Jr., INT to FAY
D. J. Wagner, MEM to ROA

Retirees

J. A. Craig, Captain, INT
B. Johnson, Superintendent of Shop Maintenance-Sheet Metal & Welding, INT
M. H. Payne, Captain, ILM



If you haven't been to Florence, South Carolina recently you may not recognize it. Piedmont's folks there moved, in May, into new

terminal facilities. This picture was taken across the lobby from the departure lounge. Another picture is on page four of this issue.

PIEDMONITOR

Piedmont Aviation, Inc.

Betsy Allen, Editor
Smith Reynolds Airport
Winston-Salem, North Carolina

