

around the industry

Following is a chart showing the financial results for the first quarter of 1987 for major carriers:

airline	yield	net profit	revenues
American	10.39¢	\$ 19.9 million	\$1.5 billion
Delta/Western	12.63¢	\$ 26.4 million	\$1.5 billion
Northwest	10.66¢	(\$ 34.99 million)	\$1.17 billion
PSA	14.59¢	(\$ 6.5 million)	\$183.9 million
Pan Am	9.90¢	(\$ 87.69 million)	\$605.8 million
Piedmont	15.84¢	\$ 5.7 million	\$460.9 million
Southwest	9.45¢	(\$ 9.8 million)	\$178.4 million
Texas Air	N/A	(\$100.7 million)	\$2.04 billion
TWA	10.11¢	(\$ 54.8 million)	\$824 million
United	9.70¢	(\$ 41.4 million)	\$1.9 billion
USAir	14.42¢	\$ 23.5 million	\$465 million

The DOT has chosen TWA to replace World on the BWI-London route. TWA plans to begin service June 22.

United is expanding its service at LAX and by June 5, will have 107 daily flights at this airport. Among the new flights being added are 12 daily departures between LAX and ORD.

Boeing has selected the new and highly efficient Unducted Fan (UDF) for continued development as the baseline engine for the advanced technology 7J7 airliner due to enter service in 1992. The UDF engine features two counter-rotating fans external to the engine's nacelle. The large-diameter fan stages offer dramatically reduced fuel consumption compared to today's powerplants. On the 7J7, two of the engines would be mounted on the aft fuselage. In addition to the advanced propulsion system, the Boeing 7J7 will utilize emerging technologies in the areas of aerodynamics, aircraft systems and lightweight materials, as well as innovative concepts in cabin design. It will seat about 150 passengers in a twin-aisle configuration that can be rapidly rearranged to meet airline traffic requirements.

Both United and American are imposing a \$9 ticket surcharge on passengers originating at Chicago airports to offset a five-cents-per-gallon fuel tax levied on airlines by the city.

As a result of its expansion, Texas Air now has annual revenues around \$7.9 billion, a fleet of 603 aircraft, and offers 11.8 billion available seat miles annually to 225 cities worldwide.

Midway will begin shuttle service on June 1 with 12 flights daily between Detroit and Chicago Midway.

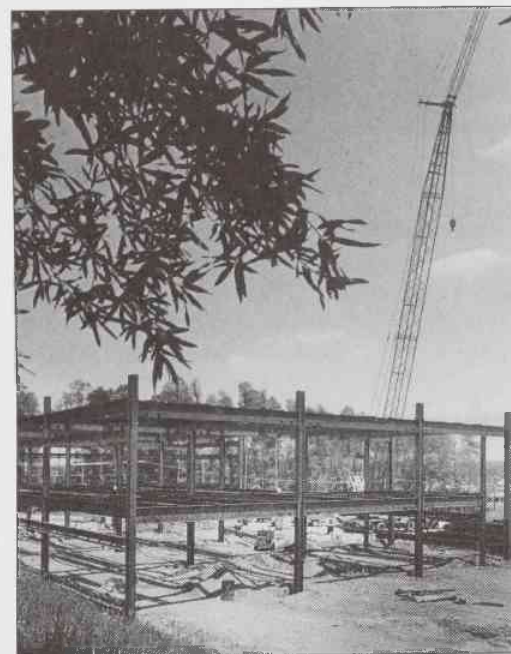
Air U.K. is the first major British carrier to ban smoking on selected flights. The ban, which became effective May 1, is for a four-month period.

United has entered into marketing and code-sharing agreements with two airlines, South Central Air, an Alaskan regional carrier, and North Pacific Airlines, a new carrier based in Pasco, WA.

The airlines and the airports serving Chicago contribute more than \$9 billion annually to the economy of the Chicago area, the Air Transport Association reported in a recent study. More than 45 airlines serving O'Hare and Midway airports have a vital impact on the economy flying 58 million passengers and more than 885,000 tons of freight, mail and express in and out of the city each year. The airlines, other airport tenants, and individuals employed by airport and airline suppliers, travel-related industries and local businesses that support them employ 186,000 residents.

American plans to open a pilot and flight attendant crew base at its new RDU hub on October 1. Initially, 50 pilots and 80-90 flight attendants will be based here. By 1991, the base is expected to grow to include 400 pilots and 700 flight attendants.

MGM Grand Air, a new-entrant carrier, plans to begin service June 1 between New York and Los Angeles. The airline has 727-100s, all first-class, with 33 seats.



The long wait is finally over. After numerous construction delays, the new Presidential Suite at EWR opened April 28, bringing the total number of Suites on our system to 13. Presidential Suite agents include (above, front row, l to r) Robbyn Wasmer, Janet Murphy, Patty Kidney, Maria Cerbone, Kalli Zoumas, Debbie Chervbini, Al Antao, and Janelle Andrews; (standing) Dave Kerwin, Jim Pignataro, David Peterson, Jack Tiernan (supervisor), Anthony Garcia, and Ray Kassinger.

Vincent Bonaventura (right), EWR airport manager-port authority, does the honors during a ribbon-cutting ceremony, while Station Manager Frank Woodruff holds the ribbon.

PI among the best

Readers of *Travel-Holiday* magazine chose Piedmont as one of the best airlines in the industry for on-time performance, courtesy of personnel, efficiency of baggage handling, and quality of in-flight food service.

Each October *Travel-Holiday* asks its two million readers to share their opinions of the quality of the travel services they have used during the past year. The magazine tabulates and analyzes the responses and announces the companies that—from the readers' point of view—provided the best service to the traveling public.

Among domestic carriers, Piedmont received the second-place award in the magazine's 1987 Travel Poll; Delta was the first-place winner. Swissair was rated the top airline among international carriers and Air New Zealand and Singapore Airlines tied for second.

on May 15

number of departures: **1,282**
miles flown daily: **449,968**
ASMs: **51,859,694**
number of aircraft in fleet:
average aircraft hop: **351.0**
number of airports served: **88**
daily block time flown: **1,500 hours**
47 minutes

next schedule change: **June 15**

traffic

	April	First Four Months
passengers	2,293,870 +23.3%	8,036,333 +21.4%
revenue passenger miles	1 billion +20.3%	3.57 billion +17.4%
available seat miles	1.5 billion +10.0%	5.97 billion +11.0%
load factor	67.19% +5.74 pts.	59.82% +3.26 pts.

In April, Piedmont set new monthly records for passengers and RPMs, and ASMs were the highest ever for the month of April. For the first time in our history, RPMs exceeded one billion, and the monthly load factor was the second highest in our history. (Our record high load factor is 69.24 set in April 1979 when United employees were on strike.)

The following 21 stations set new boarding records in April: CAK, BWI, BOS, CLT, DTW, ELM, ISP, AZO, TYS, JFK, YOW, PHL, ROC, SAV, SYR, TLH, DCA, PBI, CHS, YUL, and RDU.

Our six reservations centers answered 2,938,515 calls in April.

cargo

	April	First Four Months
U.S. Mail	2,043,864 +20.3%	7,808,495 +11%
Air Freight	2,845,042 +58.1%	10,177,495 +50.3%
Air Express	60,463 +28.9%	231,749 +15.3%
TOTAL	4,949,369 +39.5%	18,217,719 +30%

(ton miles)