

**The Rocky Mount Herald**

Published Every Friday at Rocky Mount, North Carolina, by The Rocky Mount Herald Publishing Company  
**TED J. GREEN** News Editor and Manager  
**M. PACKARD** Assistant Editor  
 Entered as second-class matter January 19, 1934, at the post office at Rocky Mount, North Carolina, under the Act of March 3, 1879

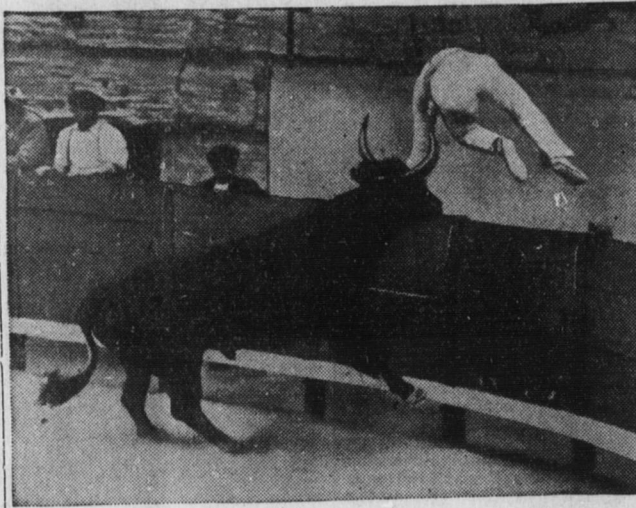
Publication Office: Second Floor Daniels Building, Rocky Mount, Edgecombe County, North Carolina  
 Subscription Rates: One Year, \$1.00; 6 Months, 60c  
 Advertising rates reasonable, and furnished to prospective advertisers on request

As the cotton goes to the gin the time is at hand to select seed for next year's crop. If no good seed are available, and seed of an approved variety, a determination to buy better seed should be carried out. They will be cheaper for the next several months than they will be next spring.

**JOHN NANCE GARNER**

From our observation of him in his governmental positions since we can remember, we have become great admirers of John Nance Garner, Vice-President of the United States and as such presiding officer in the Senate.  
 We believe that he deserves to be called a real statesman. We also believe that with his statesmanship he is an excellent politician. No statesman can get far under the American plan of government who is not. Garner knows what he wants to get done in the senate, and just how to go about getting it done.  
 He is no wild-eyed radical, nor is he a shell-backed conservative. He is just a safe and sane medium between the two extremes. He never rocks the boat.  
 A mighty sound individual, John Garner, and one who even lends dignity and importance to the position of Vice-President.

**Bull Gives French Crowd Big Laugh**



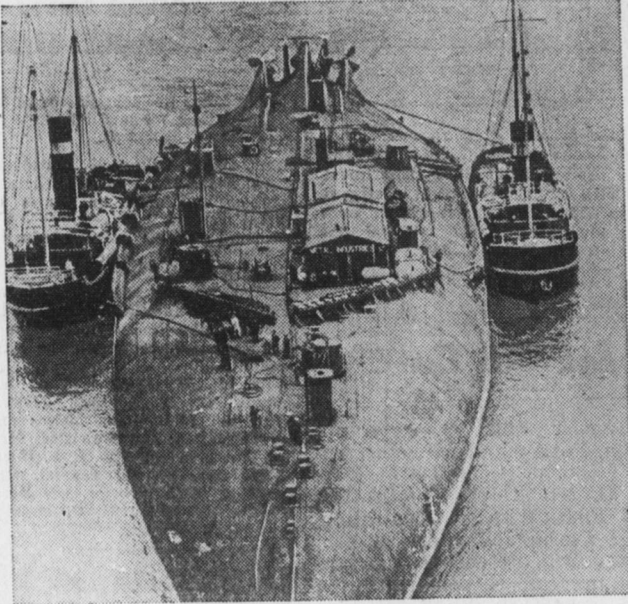
A bull gives the crowd a laugh at a bullfight at Saintes-Maries-de-la-Mer, La Camargue, France, as he chases the razeater over the barricade. The traditional Spanish sport is being carried on in parts of France while Spain is engaged in civil war.

A swine feeding demonstration with 35 pigs has been started on the farm of A. H. Vann of Franklin County.  
 A large number of farmers in Rowan County are preparing their land for alfalfa, according to D. H. Sutton, county farm agent.

**Club Districts Will Meet In October**

During the month of October thousands of federated club women in North Carolina will attend the district meetings being held in each district in the State. To each, Mrs. Howard G. Etheridge, of Asheville, State president of Federated Women's Clubs, and Mrs. Britt, Second Vice-president, and chairman of districts, will go.  
 The district meetings will provide an opportunity to meet in person, the State officers.  
 "One of the most lasting benefits derived from the district meetings is the information about project work and the inspiration disseminated through the exchange of ideas in the individual club reports," thinks Mrs. Etheridge who was chairman of districts two years ago.  
 The first district meeting will be that of District No. 1, which will meet in Bryson City, October 2, and will continue through October 22, until the sixteen districts have held their meetings.  
 The Eighth District, of which Mrs. E. R. Anderson is president, will meet Tuesday, October 26, in Chapel Hill.

**Bound for the Scrap Heap**



Proud days of mighty power are no more! The scuttled German battleship, Friedrich der Grosse, was salvaged from Scapa Flow. It is shown being towed, keel up, to a dry dock at Rosyth, Scotland, where it will be broken up.

**HOW TO MAKE SAUERKRAUT**

Since writing an article on the healthfulness of sauerkraut, I have had a great many inquiries for a recipe for making it. I am giving here the government recipe.  
 Four-gallon or six-gallon stone jars are the best containers unless very large quantities are desired, in which case kegs or barrels may be used. Select only mature, sound heads of cabbage. Quarter and slice off the core. For shredding, a hand shredding machine is best, though an ordinary saw cutter or a large knife will do.  
 Fermentation is carried out in the brine from the juice of the cabbage extracted by the action of salt. One pound of salt to every 40 pounds of cabbage makes the proper strength of brine. This may be distributed as the cabbage is packed in the jar or mixed with the shredded cabbage before being packed. Thus the distribution of two ounces of salt with every five pounds of cabbage is probably the best way to get even distribution.  
 The cabbage should be packed firmly but not too tightly in the jar or keg. When full, cover with a clean cloth and a board cover or plate. On the cover place a weight heavy enough to cause the

brine to come up to the cover. A flatiron or other similar weight will do.  
 If the jar is kept at a temperature of about 86 degrees fermentation will start promptly. A scum soon forms on the surface. As this tends to destroy the acidity and may damage the cabbage, it should be skimmed off from time to time. If kept at the temperature indicated fermentation should be completed in six to eight days. After fermentation is completed, the kraut should be set in a cool place.—F. M. R., in Progressive Farmer.

Despite a poor season early in the summer, T. F. Sellers of Cleveland County will produce 50 bushels of yellow corn per acre on an upland field which has been in lespedeza for the past two years.

J. M. German of Boomer, Wilkes County, recently purchased one of the best young Jersey bulls on the Morrison farm in Mecklenburg County.

C. R. Ammons, acting farm agent of Harnett County, says that cholera outbreaks in his county are more frequent in the fall than at any other season of the year.

Four-H Club members of Anson County are cooperating actively in the Wildlife Conservation program, with many good reports expected to be turned in this fall.

Camden and Currituck sweet potato growers sold 50 cars of the sugar spuds to the Surplus Commodity Corporation in the effort to stabilize prices.

J. T. Horne, route 3, Wadesboro, Anson County, recently planted some of the best land on his farm to pasture for his herd of 30 Jerseys.

Strawberry growers of Columbus County are being urged to set 12,000 to 15,000 plants per acre during September in order to assure them of a profitable crop next spring.

**TWO DAY COLD TREATMENT**

Our own prescription for a two day cold treatment is very effective  
**TRY IT ONCE AND YOU WILL TELL YOUR FRIENDS HOW GOOD IT IS**  
**MOORE'S C. O. D. DRUG STORE**  
 In Ricks Hotel Building

**Drastic REDUCTIONS**

- Here Are Just a Few!  
 Sunnyfield  
**OATS** 2 Reg. Pkgs. 15c  
**SNOWDRIFT** 6 lb. can \$1.05  
**BEANS** Iona With Pork 1-lb. Can 5c  
**SOAP** Camay or Palmolive 3 Cakes 17c  
**Corn FLAKES** Kellogg's 3 Pkgs. 20c  
**Corned BEEF** Armour's No. 1 Can 19c  
**KETCHUP** Std. Quality 14-oz. Bot. 10c  
**COCOA** Iona Brand 8-oz. Can 5c  
**CRISCO** 3 lb. Can 59c  
**DRESSING** Ann Page Salad 1/2-Pt. Jar 10c  
**JELLO** or Royal Gelatin Dessert Pkg. 5c  
 Sparkle 4 Pkgs. 17c  
**CAKE FLOUR** Package 27c  
 Swansdown or Pillsbury's  
**JUICE** Standard Grapefruit No. 2 Can 10c  
**BEANS** Iona Stringless 2 No. 2 Cans 15c  
**MAXWELL** House Coffee Pound 29c  
**RED CIRCLE** COFFEE Pound 23c

**\$55,000<sup>00</sup>** IN PRIZES GIVEN AWAY!  
 (RETAIL VALUE) Ask Your A&P Manager About This Week's Contest

- POTATOES** no. 1 white 10 lbs 17c  
**ONIONS** fancy yellow 3 lbs 10c  
**BANANAS** golden yellow 4 lbs 17c  
**GRAPES** white or red 3 lbs 25c  
**COCONUTS** large fresh each 10c



W. R. Wilkerson of Person County has purchased a 1000-pound Jack from Tennessee in the program to produce Person County work stock on Person County farms.

**FIRST CHURCH OF CHRIST SCIENTIST**

Sunday morning service 11 A. M.  
 Wednesday evening service 7:45 P. M.  
 The reading room in the church edifice is open daily except Sunday and legal holidays, from three to five P. M.

**666** checks **MALARIA** in 3 days **COLDS** first day **HEADACHE** 30 minutes  
 Liquid, Tablets, Salve, Nose Drops  
 Try "Rub-My-Tiam"-World's Best Liniment

**HILL - PROCTOR PRINT SHOP**  
 Commercial Printing of All Kinds  
 114 Washington St. Phone 39 Rocky Mount

**I. T. VALENTINE ATTORNEY-AT-LAW**  
 General Practice in Both State and Federal Courts  
 NASHVILLE, N. C.

**B. E. FOUNTAIN ATTORNEY-AT-LAW**  
 General Practice  
 Office Daniel Building  
 ROCKY MOUNT, N. C.

**DR. R. L. SAVAGE**  
 Diseases **EYE, EAR, NOSE AND THROAT**  
**GLASSES FITTED**  
 Office over Five Points Drug Store  
 Rocky Mount, N. C.

**L. A. GRIMES PLUMBING - HEATING**  
 PROMPT ATTENTION TO ALL REPAIR CALLS  
 PHONE 1304-J  
 534 Marigold St. ROCKY MOUNT, N. C.

**NEWPORT SIGN COMPANY**  
 Out-Door Advertising **J. WEIR ANDERSON**  
 WINDOW, AND ALL KINDS OF SIGNS  
 Rocky Mount, N. C. — Phone 364

**WANTED**  
**OAK WOOD — CUT OR ON STUMP**  
 Write or Call **J. J. BOSWELL**  
 1,000 S. Church St.

**RICHARD T. FOUNTAIN ATTORNEY-AT-LAW**  
 General Practice in All State and Federal Courts  
 Office, Daniel Bldg. ROCKY MOUNT, N. C.

**DO YOU KNOW—**  
 Your Old Mattress Can Be Made Like New For Small Proportion Of Original Cost?  
**SOUTHERN Mattress Co.**  
 CALL PHONE 1712-W  
 Rocky Mount, N. C.

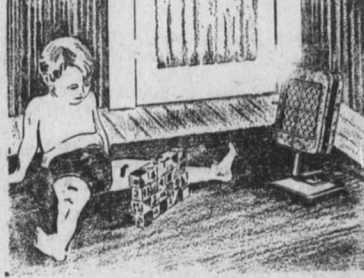
**FRESH FISH**  
 SPECIAL SEASON for **Ocean View SPOTS**  
 Which We Receive Daily  
 Call The **BEAUFORT** And **MOREHEAD**  
**SEA FOOD**  
 Phones 1610-1836  
 157 Washington St. ROCKY MOUNT, N. C.

**INSTANT HEAT**

where you want it... with a **PORTABLE HUMPHREY RADIANTFIRE**

For baby's bath — for Grandma's nap — for the den, or basement or attic playroom — banish chill instantly with the healthful sunlike rays of a Portable Humphrey Radiantfire.  
 It's a great little heater. Sturdy. Strong. Yet light enough to be picked up and connected to any gas outlet. And a good gas fitter can put connections where you want them with little trouble or cost.  
 Out on the sun porch it's as handy for the cool evening as an electric fan is for the hot one. In a cold kitchen, connect it up to the end of the range manifold, set it on the floor, a box, table, or shelf out of the way, and the problem is solved.  
 And keeping warm isn't the half of it. A supply of radiant infrared heat to turn on whenever there's an ache or pain to be soothed is another valuable use for the Humphrey Portable.  
 The heater is 21" high with a heavy drawn sheet steel base 8" x 10". Total weight only 16 lbs. It is equipped for hose connection. By removing the hose connection, it is ready for solid pipe connection. Finish is walnut brown with plated trimmings to harmonize with other home furnishings. Come in and see it on display.

No. 14  
 Portable Humphrey Radiantfire



**\$8.50** Complete With Tube

**Rocky Mount Public Utilities**  
 127 North Main Street  
 PHONE 1842

**HABIT**

Our Lives are a Series of Actions that Have Become Habits Through Practice

**EXTRAVAGANCE IS A HABIT. THRIFT IS A HABIT.**

WHICH HABIT ARE YOU PRACTICING?  
 OPEN A SAVINGS ACCOUNT WITH US

**The Planters National Bank And Trust Company**  
 MEMBERS: Federal Reserve System, Federal Deposit Insurance Corporation