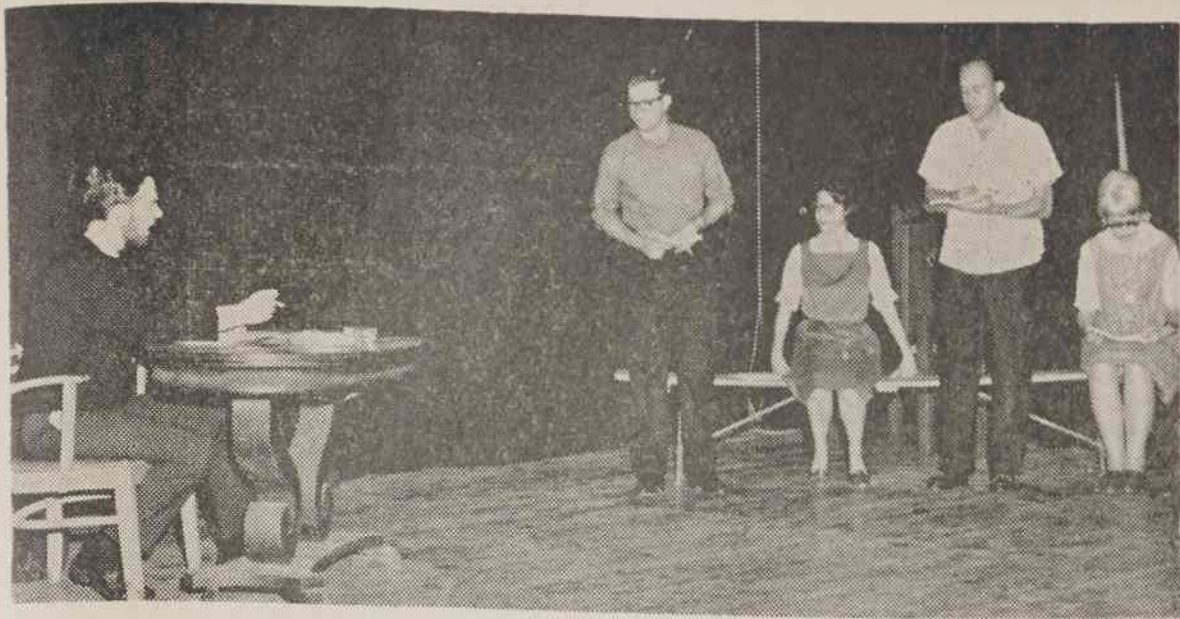


# The Collegiate

PUBLISHED WEEKLY

ATLANTIC CHRISTIAN COLLEGE, OCTOBER 12, 1962

NUMBER FOUR



**FALL PLAY**—Shown above is a practice scene from the Fall production, "Pots of Money," which is to be presented Nov. 1 and 2 by Stage and Script. Pictured from left to right are George Farr, Jim Burroughs, Barbara Lewellyn, Arthur Pritchard, and Eva Holmberg. The play, a comedy by Eugene Lubiche and A. Delacour, will be presented in Howard Chapel under the direction of Mr. Cecil Willis.

## Fall Rush To Begin Monday, Oct. 22 Schedule For Rushees Is Announced

Fall Rush will begin Monday, Oct. 22 and will last through Thursday, Oct. 25. All rushees will be divided during the four days of rush, each group will have a specific sorority or fraternity to visit.

Girls interested in visiting the sororities should visit the assigned sorority for that afternoon between 3 - 5 o'clock. Boys interested in visiting fraternities should visit the assigned fraternity for that evening between 7 - 9 o'clock. Rushees will have to visit all four sororities or fraternities before being eligible to receive a bid from any particular one. Therefore, it is most important that each rushee make sure their name appears on the registers of all four sororities or fraternities.

Friday morning, Oct. 26, rushess

will be able to pick up all their bids in the Bohunk. From the time the bids are available until Monday, Oct. 29, at 12 noon is determined quiet period. During this time no Greek is allowed to talk with any rushee about their sorority or fraternity. This is

### Dance Tonight

Delta Sigma Sorority is sponsoring a dance in the Bohunk Friday night, October 12 from 8-11. Admission, refreshments, and music are free!

## Cafeteria Problem Is Topic Of Board

Line-jumping and the length of time required to get served in the dining hall, composed the major topic of discussion at the Executive Board meeting Monday night.

In the course of discussion on the dining hall problem, Gina Allen, sophomore senator, stated that she had received many complaints concerning habitual line-breaking during the noon and evening meals. She further pointed out that line-jumping was one of the major reasons for the slowness of the lines.

A committee to study the cafeteria situation was appointed by President Sherian. The committee is to report back to the Executive Board at a future date with the possible remedies that can be initiated. Appointed to the committee were Bob Stone, chairman, Jess Magham, and Jackie Rivenbark.

President Sherian announced that the executive board was planning a luncheon for the Peace Corps representative who will speak at ACC Tuesday, Oct. 30. The luncheon will be held in Cherry Hotel with individual Board members paying for their own dinners.

an important rule and it must be enforced. All rushees are to make their own decisions as to which sorority or fraternity they pledge.

Any time from Friday, Oct. 26, until Monday at noon, Oct. 29, a rushee is free to pin on the ribbons of the particular Greek brotherhood or sisterhood of their choice. Upon pinning a sororities or fraternities ribbons on, the rushee now becomes a pledge and is free to talk with the Greeks.

All decisions must be made and bids returned to the Administration Building by noon on Monday, Oct.

## Concert Committee Headed By Boswell

The Assembly and Concert Committee has begun its work for the current year. The purpose of this committee is to bring artists and lecturers to our campus, or in other ways to make such events available to our student body and faculty. The committee is composed of both student and faculty members. All students are reminded that they are represented on this committee, and that any communication they would like to make to this group should be done through the class representative. These representatives are: Freshman, Martha Sue Mewborn; Sophomore, Jewel Cooper; Junior, Jimmy Aycock; and Senior, Jimmy Boswell, who is co-chairman with Mr. James Cobb.

With a very limited budget, this committee is attempting to bring as many outstanding and worthwhile events to the students as possible.

## Annual Top Hat Dance Scheduled For Oct. 20

Phi Sigma Tau Sorority will sponsor its annual Mr. Top Hat Dance on Oct. 20, from 8:30 until 12 in the school cafeteria.

Music will be furnished by the Rythem Rockets and admission will be 75 cents stag and \$1 per couple. The dress will be semi-formal.

The sorority has selected a boy from each fraternity, class, and one boy to represent those who are not members of a fraternity. The candidates are as follows:

Alpha Sigma Phi, Billy Bass; Delta Sigma Phi, Maurice Edmundson; Freshman Class, Gene Brown; Independent, Bud Griffin; Junior Class, John Boyd; Senior Class, Tommy

Parham; Sigma Phi Epsilon, Don Williamson; Sigma Pi, Ted Peacock; Sophomore Class, Jerry Ashworth.

Rex Horne, Mr. Top Hat of 1961-62, in the capacity of Master of Ceremonies will crown his successor during intermission. Election will be by popular vote at the dance.

Also during intermission, the sorority will present a variety of entertainment including a kick-line of twelve selected Freshman girls. The kick-line will accent the night club setting which is planned.

Other freshman and transfer women will act as cigarette and hat check girls.

## Wenger Attends LA Convention

The Annual International Convention of Christian Churches (Disciples of Christ) was held in Los Angeles last week. The theme of this conclave was the "Power of God". There were 9,500 delegates in attendance. Atlantic Christian College was represented by President Arthur D. Wenger. A major event of the convention was a huge communion service at the Hollywood Bowl where 15,000 people participated.

A total of 66 resolutions were passed on the agenda concerning pol-

icies of the church and its agencies. Several major resolutions gave an interpretation and indication of the Disciple policy toward intergration. One widely discussed resolution concerned the question of the "Ole Miss" intergration problem. The convention called on the officials of the University of Mississippi to avoid violence and to comply with the law. In resolution 52, the convention addressed all agencies of the Disciple Church, including the 32 institutions of higher education, to disregard race in their functioning policies.

## Winstead Joins College Faculty

Elton D. Winstead of Durham is now serving as assistant professor in the department of education and psychology at Atlantic Christian Col-



ELTON D. WINSTEAD

lege, according to Dr. Arthur D. Wenger, president of the college.

A retired army officer, he earned his B. S. degree at Atlantic Christian College, his M. Ed. degree at Duke University where he is currently engaged in doctoral studies. While in service Mr. Winstead was engaged in teaching and supervision in the military schools. During the past year he has taught at the Industrial Education Center in Durham.

A native of Wilson, he is married to the former Miss Josephie Minshew of Wilson. They have four children. A son, Edward, also an alumni of ACC, is currently attending the United States Military Academy.

Atlantic Christian was further represented by a display booth at this assembly. This display featured the student publications: THE BULLDOG, THE COLLEGIATE, THE LITTLE REVIEW, and THE PINE-KNOT. Also included were current issues of the Administration publications: the Alumni News letter, "Scope," the college catalogue, and bulletins from the various departments.

Worden Allen, ACC's Director of Development, was elected to membership on the Board of Higher Education for the Disciples of Christ. This board includes heads of the 32 member institutions of higher education colleges, universities, seminars and elected individual members.

## \$20,000 Spent On Dormitories, And Dining Hall

More than \$20,000 was spent during the latter part of the summer in repairs and remodeling work on the campus — done chiefly to the dining hall, Hardy Library, and Harper Hall.

A fourth of this sum was used for work done on the main floor of Harper Hall. Refurnishing of the parlor totaled \$3,000 and consisted of re-upholstering most of the furniture, complete repainting, refinishing the floor, and hanging new drapes. The remainder was expended on painting the entire first floor.

Repairs on the dining hall included repainting the interior, hanging drapes, and installing an air-conditioning system, and totaled approximately \$6,800.

Expenditures for work done to the library were \$9,000. This sum was spent on replacing several window frames, painting the exterior of all frames, and repainting the major portion of the interior. The structure is now being air-conditioned, at a cost of \$7,800.

## Dr. Elliot Hosts Foreign Students

Dr. Vida Elliot was hostess at her home on Friday, Oct. 5 for the foreign students. Dr. Elliot, Chairman of the Foreign Students' Program, sponsored a social tea for the purpose of drawing closer ties among the foreign students and the faculty members of the committee. The committee consists of Dr. Long, Mr. Johnston, Miss Ward, Mr. Hensley, Miss Clark, and Miss Daniels. Mrs. Doris Wenger was the invited guest of the committee.

At the tea were seven foreign students representing five different countries. The Korean students were Muoung Soon Yim, her brother Churl Soon Yim, and Mamcho Park. Kaveh Boozeri, from Iran, Eva Anita Holmberg, from Sweden, and Al Muddaris, from Iraq were also present.

All of these foreign students speak English fluently and are much interested in American culture and way of life.

Dr. Elliot served a variety of niblets and teas from both China and India. The tea was served on an Indian tablecloth which Dr. Elliot purchased in India.

## Shackleford Is Appointed

Mrs. Ruby P. Shackleford of Wilson is now serving as assistant professor in the department of English

at Atlantic Christian College, according to Dr. Arthur D. Wenger, president of the college.

A native of Wilson County, she is a graduate of Black Creek High School. She attended Atlantic Christian College and received the A. B. degree from Woman's College of the University of North Carolina and earned the M. A. degree from East Carolina College.

She has taught English, French, and history in Wilson County at the Gardners, Rock Ridge and Lee Woodard Schools.

Mrs. Shackleford is a member of the NEA, NCEA, Delta Kappa Gamma (past president of Omicron chapter), the North Carolina State Board of Education Curriculum Study and served as a member of the Board of Editors, "North Carolina Education," 1956-58.

She is a member of the Black Creek Methodist Church where she is presently serving as choir director.



RUBY P. SHACKLEFORD