

Faculty Profile . . .



MRS. MYRTLE SAMPSON

Did you know that we have a person on our faculty who can teach biology, science, mathematics, or psychology, and who can also serve as a librarian? We do have such a person. This she is Mrs. Myrtle Sampson.

Serving as an instructor on campus in psychology, and library science, Mrs. Sampson has a long educational history behind her. She graduated as valedictorian of her high school class and received her Bachelor of Science degree in biology with honors at North Carolina College. At this same time she had minors in library science and general science.

Mrs. Sampson also received a masters degree in library science from North Carolina College, and a masters degree in psychology and education at the University of Michigan, Ann Arbor. She has further studied in social psychology and special education at A&T College, University of Michigan, and the University of North Carolina at Greensboro.

Her occupational experience includes being an instructor in biology, mathematics, and science, and serving as a librarian. Also she has served as the Assistant in Guidance-Counseling Institute of the Public Health Department-North Carolina, in Durham.

"I feel," Mrs. Sampson says, "that working here at Bennett is very rewarding and that the students seem to show a significant amount of interest in their work." Applauding the close and informal relationship between the faculty and student-body, she says, "it is not detrimental." "In fact", she states, "it greatly aids the instructor in evaluating the students individually."

THANKSGIVING BALL

The traditional ball was the climax of a Thanksgiving weekend on Bennett's campus. The band was a local group who entranced the audience with a new style of music as contrasted with some other bands which have been featured on previous balls.

One main attraction in the decorations was a fountain which was in the middle of the dance area to add color to the theme of Parisian Soiree.

Refreshments in the foyer also added to the occasion.

3 Fine Stores
for your
College Needs

**Thalimers-
Ellis Stone**

Summit - Friendly
Downtown

Mrs. Sampson is married to a pharmacist, who owns a drug store frequented by the Bennett students. They have no children. Her favorite hobbies include collecting old coins, working puzzles and deep sea fishing.

**COUNT YOUR
MANY BLESSINGS**

On Thursday morning, November 26, the dining hall of Bennett was once more alive with the festivities of the annual White Breakfast. Mingling with the lovely white dresses of the Bennett students were the dark suits of the Morehouse College Glee Club. There was an aura of genuine thanksgiving and appreciation over the dining hall.

The prelude was given by Miss Eloise Franklin, a sophomore. The grace was given by the Rev. A. K. Stanley of Bennett College. Everyone then began to enjoy the wonderful breakfast prepared. The menu consisted of a half grapefruit with cherry, Canadian Bacon and Scrambled eggs, grits, hot biscuits and butter, strawberry preserves, coffee or tea.

Greetings came from the Morehouse Glee Club president, James Williams. The Thanksgiving spirit was enhanced by the ap-

propriate selections by the visitors.

Dr. Willa B. Player, president of Bennett College, gave timely and well-received remarks. The "good ole" Bennett spirit was ushered in with the singing of the "Preference" song by Miss Barbara Hammond, a senior. "Tell Me Why," another Bennett traditional song was sung by the Miss Joyce Dunn, Bennett College Choir president.

Solemn, moving, melancholy, exhilarating — who can describe the emotions invoked by the singing of the Alma Mater? There are no words to describe what was in the hearts of the girls as they pledged to be "true to thee while life shall last."

As the girls filed out of the dining hall, there was written on the face of each, "this was a breakfast to be remembered."

Many thanks and appreciations go to the girls who helped to make this event possible. They were the YWCA officers and members. The officers are: President, Carolyn Conway; Vice President, Alice Williams; Secretary, Eva Rice; Treasurer, Claudia Hubbard; and Program Chairman, Donna Oifutt.

Liza Abram

ORGANIZATION NEWS

By RITA M. RUFF

Now that the Christmas holidays are rapidly approaching, many of the organizations on campus are engaged in yuletide activities. The Student Union has gaily decorated the Union building back upstairs and in the book store.

The Student Union plans a Shindig sometime before Christmas vacation. The Student Senate sponsored its annual Christmas party on December 12. The Christmas Season was ushered in with the annual production of "Living Madonnas." The Nativity scenes were beautifully depicted by scenery made by the art department and the characters were represented by various Bennett sisters. The background music was supplied by the Freshman choir. The Dance Group gave a performance in Chapel on December 16. The Majors and Minors Club in Physical Education is planning a dance to be given in the gymnasium in the immediate future. The Foreign Relations Club presented a program on December 10, with Dr. Karfiol as the speaker telling the student

how Christmas is celebrated in Germany. The Sunday School Club plan for the Yule tide season was to invite the neighborhood children to Sunday School, where they received fruit and toys.

Last but not least the Bennett students have gathered together and created a new organization for our enjoyment. This organization is the Recreation Committee headed by Bernadine Harris. Each dormitory sends a delegate to the club meetings which are held on Saturdays in the Goode Gymnasium. The function of the club is to plan and organize activities in the Health and Physical Education Building. The Recreational Committee shall also be responsible for obtaining ideas and suggestions for activities from campus organizations.

From all of the organizations on campus, a very Merry Christmas and a Happy New Year are extended to all of Bennett's students and faculty.

Poetry Corner

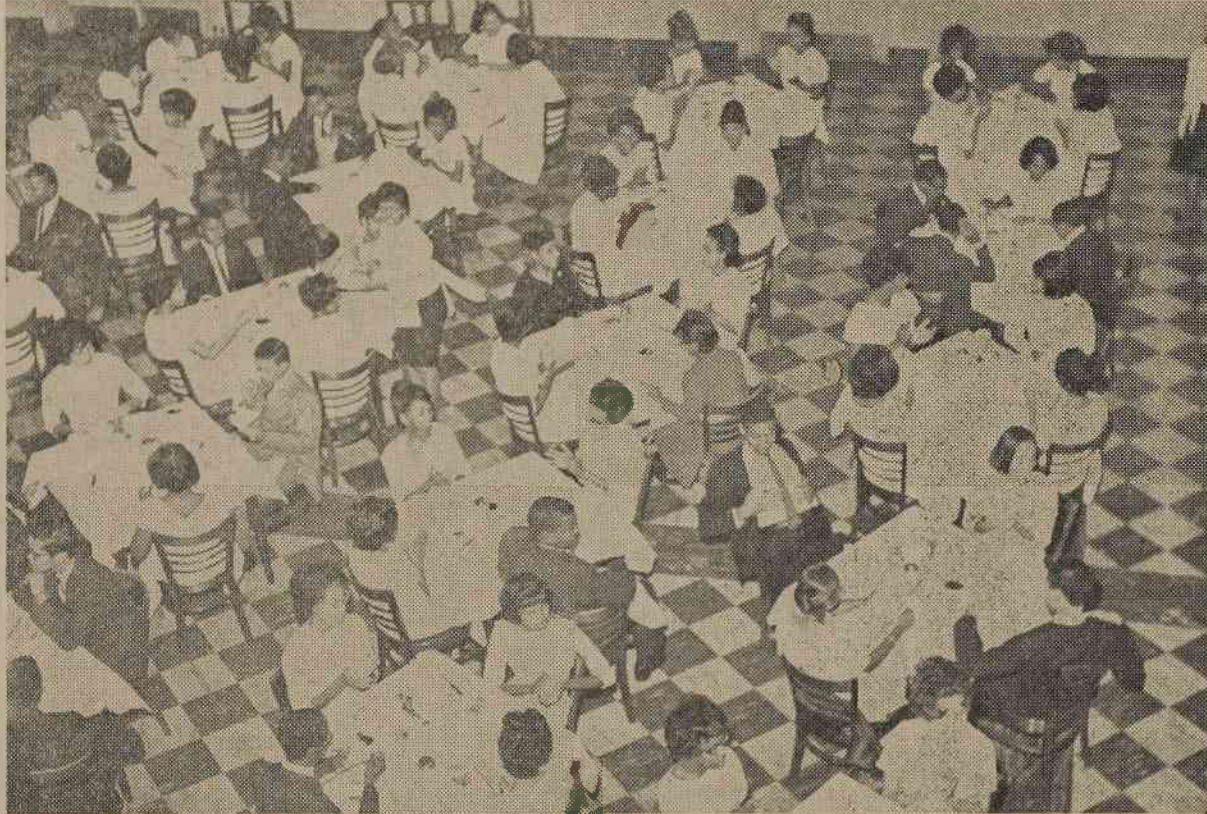
ON DEATH

Toils are ever present in this realm
Seemingly there is one element of hope
beyond—old arrogant death where we may abide in a performance of glee.

Sorrow prevails the universe that
No one has apprehended the great darkness
So that it can be ever sure of the later effect of the perished.

This realm is nothingness and depleted
for when a spark of light is shone it is immediately relinquished into the infinite mist
faraway in the doom of all other helpless beings.

For if toils are constantly amidst us
and the only fighting assurance is what darkness holds
If that holds no clue to understanding of this existence perhaps we have to await another.
Lillie Madison



A scene from the White Breakfast on Thanksgiving Morning.



ELEVEN BENNETT STUDENTS ELECTED TO "WHO'S WHO"

Pictured here are eleven seniors at Bennett College who have been elected to "Who's Who in American Universities and Colleges" for 1964-65 academic year.

The honorees, who represent five states and the District of Columbia, not only evidence high scholarship but involvement in many co-curricular activities on campus.

Chosen were:

Misses Mary Adams, of Pontotoc, Miss., music education major and president of the Music Club; Frances Campbell, of Montgomery, Ala., psychology major and editor of the Bennett Banner, student newspaper; Patricia Corry, of Kings Mountain, pre-med major and a member of Alpha Kappa Mu, Beta Kappa Chi and the Senior Honor Society; Wilma Giles, of Mount Olive, nutrition and chemistry major and parliamentarian of Omicron Eta Chi, home economics club;

Misses Gloria Hayes, of New Bern, an English major and member of the Language Club and the vesper choir; Patricia Murray, of Washington, D. C., a psychology major and member of the

Marshall Board and the yearbook staff; Bertha Otey, of Greensboro, an elementary education major and president of the David D. Jones Student Union;

Also Misses Jane Ryder, of New Bern, president of the senior class and a member of the vesper choir; Clemontene Watkins, of South Hill, Va., a biology major and member of Beta Kappa Chi and the Woman's Athletic Association, and Mrs. Beatrice P. Stanley, of New Orleans, La., a psychology major and chairman of the mid-week vespers committee and a member of Alpha Kappa Mu.

Mrs. Stanley, who spent last year as an exchange student at Willamette University in Salem, Oregon, was elected to Mortar Board and Psi Chi while there.

Merry Christmas