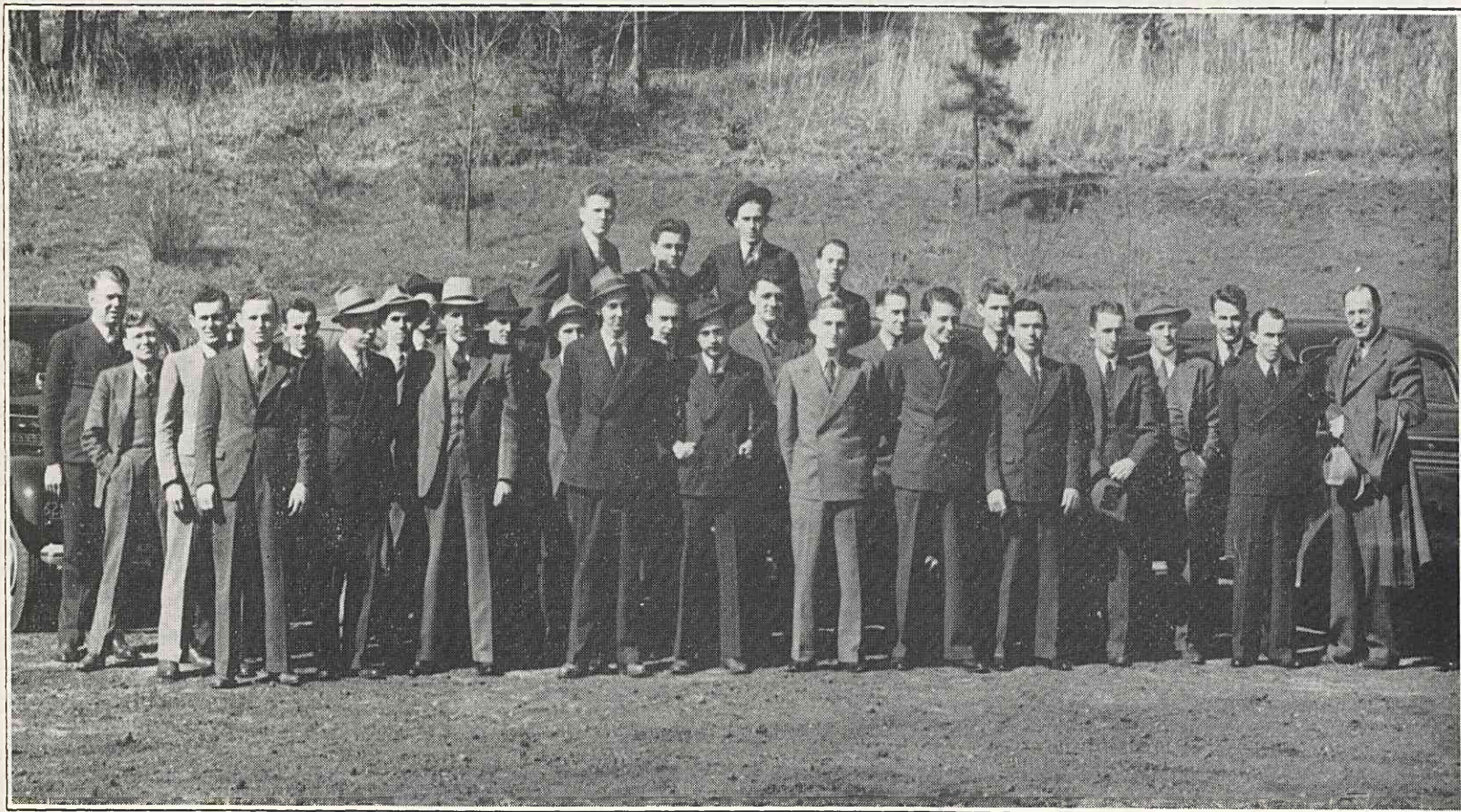




T. C. U. Club Off to Make Inspection



Members of the T. C. U. Club leaving to make an inspection tour of the Winston-Salem plant.

To Move Winston-Salem Plant To Elkin

NEW BUILDING TO BE ERECTED

Most of Twin City Employees of Company to Move to Elkin; Many Expected to Build

The Winston-Salem plant will be moved to Elkin, it was announced Tuesday, March 28th, following a meeting of the stockholders.

Preliminary work on the new building necessary to house the Winston-Salem plant will be begun immediately. Work on the structure should be well under way by May 1st, and actual movement of machinery and equipment from Winston-Salem here should start by November or December.

The Winston-Salem plant handles the finishing end of the business. This mill has not been

used, and will be retained by the company as a storage house for finished goods.

The new building will be twice the size of the Winston plant, and will have a total floor space of 145,000 square feet. In addition to this structure, a warehouse, containing 50,000 square feet of floor space, will also be constructed.

For the time being many of the employees will commute between Winston-Salem and Elkin.

The Company does not plan to build houses for the employees, but hopes that private enterprise will result in many new homes and that several apartment buildings will be constructed in the near future, by private capital.

Many of the employees of the present Winston plant will build homes in Elkin.

Estimated cost of the new

structure will total half million dollars.

The weekly payroll will be increased in Elkin from \$21,000 to \$35,000 weekly. This figure does not include salaried employees.

Preliminary work on the new plant will see the installation of a sidetrack. The building will be constructed as a separate plant on the west end of the new addition which was completed a year ago. It will run north and south, or at right angles to the present mill.

The Chatham Manufacturing Company was founded by the late T. L. Gwyn and Alex Chatham, Sr., in the form of a little mill for the manufacture of woolen cloth well over a half century ago.

The mill at that time was located on the Elkin creek, just opposite the site where the old Elkin Shoe Company building now stands. Only one loom was

used, the wool being carded and spun by hand. The mill was in operation a number of years before the manufacture of blankets was begun, and has grown steadily until today it occupies a commanding position in the manufacturing world, Chatham being the largest mill in the world manufacturing blankets.

One who did much to build this great industry was the late Mr. Hugh Gwyn Chatham, father of the company's present head, Mr. Thurmond Chatham. Under his guidance and direction the plant grew steadily, and the Winston-Salem plant was constructed to operate in connection with the main plant in Elkin.

Man is a dirty creature—made out of dust.

A general should know when to retreat as well as when to advance.