



## FIRE DESTROYS SCOURING PLANT

**"Old Mill" Goes up in Flames at Loss to Company Estimated at Approximately \$250,000**

Coming as the second catastrophe within a month, fire destroyed a portion of what is familiarly known as the Old Mill, on Friday night, September 6th. Fire which originated in a drying machine caused a fire estimated at \$250,000 damage to the scouring plant of the Company.

The fire was discovered at 7:30 p.m. by a workman. The flames quickly spread over the entire plant and were out of control within a few minutes after the thirty men at work on the night shift had fled to safety.

The sprinkler system failed to stop the fire and was cut off. Approximately 150,000 pounds of wool was destroyed.

With the aid of Chatham employees the Elkin fire department prevented the spread of the fire to the storage plant, saving about forty per cent. of the structure.

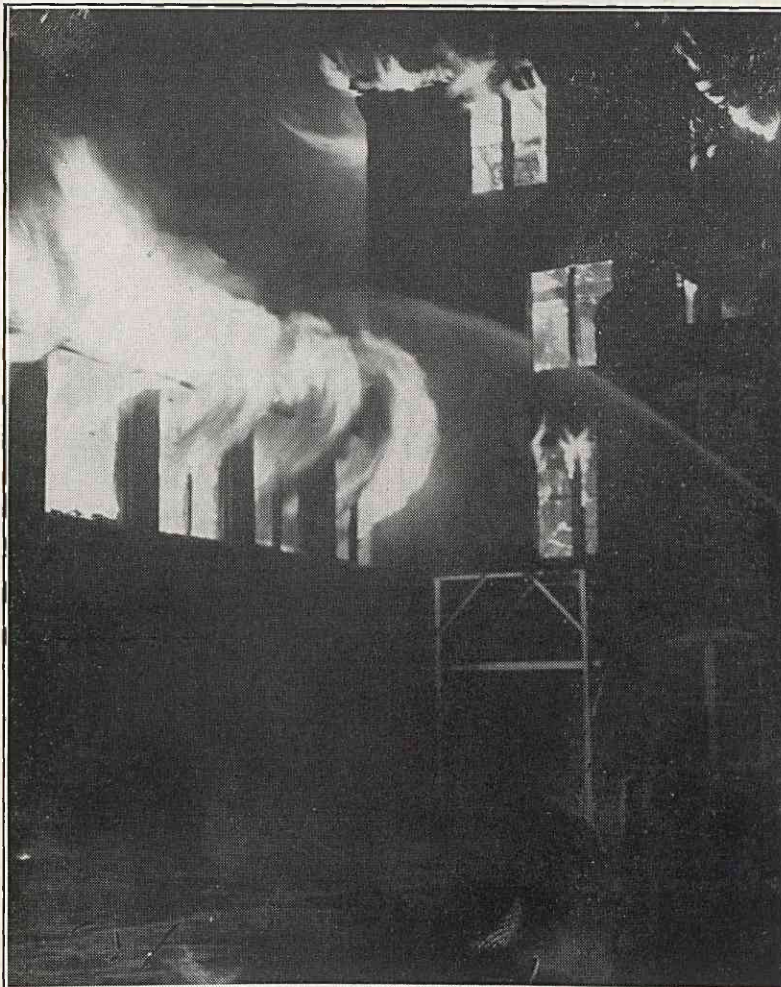
Within about four hours the fire was brought under control, but firemen and helpers continued to fight the blaze.

This plant was the second home of the Chatham Manufacturing Company. The first one was located on the Elkin Creek where the old Shoe Factory now stands, and was a wooden structure. This building was constructed forty-seven years ago, and had been used for several years for scouring and carbonizing wool, preparatory to the manufacture of blankets and cloth.

All machinery was ruined by the blaze. This part of the plant can never be used again. The scouring plant had just undergone reconditioning following the flood of August 14th. At this time the building was almost submerged by waters from the Yadkin river. It had been flooded many times during the years it had been in use.

Plans are being made for the new department to be rebuilt on the hill near the present plant. In the meantime the wool will be scoured elsewhere and shipped to Elkin for manufacturing. Work has not been curtailed and will not be. The employees of this department have been placed elsewhere in the plant.

Born to Mr. and Mrs. Dan Eldridge, a son, Dan Eldridge, Jr., at the Hugh Chatham Memorial hospital, September 5, 1940.



**AFTER 47 YEARS OF SERVICE**—Top scene was photographed as fire destroyed our scouring plant the night of September 6. Flames are shown pouring from second story windows as firemen and Chatham employees fought valiantly to prevent the conflagration from spreading to the west wing of the building. Bottom photo shows water-soaked, fire-scarred ruins of the scouring plant the morning after the blaze. Standing high upon the hill in the background, safe from floods that have caused much damage to the now gone "old mill," stands the main plant of our Company.—(Photos by Walter Burgiss.)

## FIRE DESTROYS DOBSON HOME

**Flames of Undetermined Origin Gain Good Headway; Few Things Are Saved**

Fire of unknown origin destroyed the home of Mr. and Mrs. Henry Dobson, on Bridge street, Thursday morning about 3:30 a.m. The six-room home was completely destroyed. Members of the family left early in the day, Mrs. Dobson to Richmond, and the two daughters, Alice Blake and Anna Katherine, to Winston-Salem. Mr. Dobson was alone in the house at the time and barely escaped uninjured. He was awakened by the falling timber in an adjoining room. When he attempted to get to the phone he singed his hair in the blaze. Only a few scattered things were saved from the home, the fire having gained such headway before the firemen reached the scene.

The home and furnishings were partly covered by insurance.

## Lucy Hanes Chatham Club Is Entertained

Members of the Lucy Hanes Chatham Club No. 1 enjoyed a theatre and drug store party Thursday evening. The group attended the showing of "The New Moon," starring Jeanette McDonald and Nelson Eddy, at the Lyric theatre, after which they were entertained at Abernethy's drug store. Twenty-five enjoyed the hospitality of the hostesses.

The hostesses were Mesdames Leonard York, Fae Reavis, Myrtle Martin, Geneva Harris, Marguerite Walker, Ruth Johnson and Leona Myers.

## Is Your Department In the Dog House?

The following departments find themselves out of the "Dog House" for this month, having been put there because of Lost Time accidents in their departments: Shipping, Spinning, Carding, and Picker Room.

Departments in the "Dog House" for August include the following: Wash Room, Print Shop, Burling Room and Wool Room.

Do your part to get out of the "Dog House" and to keep your department from getting in.