

# Ecusta Has A Large And Modern Fire Department

## Brigade Consists Of 54 Members; Regular Inspection Is Made

By Staff Writer

On December 5th, 1939, Mr. H. H. Straus authorized the formation of a Fire Department at Ecusta and assigned the task of organizing it to Herbert F. Finck under whose supervision it was developed into its present form.

Its main objective since inception has been Fire Prevention supplemented by Fire Detection and Fire Fighting.

To accomplish this there was set up a system of routine weekly fire inspections, a day and night watchman service and a fire brigade, and to assist in its execution, employees from various departments have been sent by Ecusta to attend the North Carolina Fire College and Drill school held each year by the North Carolina State Firemen's Association under the supervision of Sherwood Brockwell, State Fire Marshall.

Of those now serving the Fire Department, Luke Harrison, electrician for Champagne Paper Corporation, attended four years and is a graduate. Herbert Finck and Tom Hargis, electrician for Ecusta, each attended three years, and Lewis Johnson, Millwright attended two years.

The routine weekly fire inspections are made by the Fire Inspector, Ernest Burch. They involve checking every item in the plant connected with fire prevention and fighting, such as hydrants and hydrant houses, hose, yard and sprinkler valves, fire pumps, fire tank ladders, oxygen and gas masks, sprinkler systems, fire extinguishers, fire doors, etc. The position of Fire Inspector is on a full-time basis.

Fire watchman service is provided round the clock, seven days a week at the Fibre Warehouses. Additional service is provided for the balance of the mill. To do this requires seven watchmen, four for the Fibre Warehouses and three for the mill. They are Lee Scruggs, Clarence Green, Jess Allison, Alfred Beddingfield, Yancey McCrary, Horace Jones and Alvoid Galloway.

The duties of the watchmen are primarily to discover fires, fire hazards, leaks or other dangerous conditions and to report them to the proper party as soon as possible. In case of a fire he turns in the alarm through the nearest box, remains to direct the firemen to the fire and then resumes his rounds.

Ecusta has a modern fire alarm system with twenty-five alarm boxes spaced around the mill. Each box has a code number indicating the zone and the section of the zone in which it is located.

The mill is divided into five zones. Zones 1, 2, 3 and 4 lie within the area surrounded by the mill road; Zone 5 includes all areas outside of the mill road. Zone 1 takes in the corrugated Fibre Warehouses and the Caustic Tank Building; Zone 2, the Chemical Laboratory, Pilot Plant, Turbine Room, Pre-digester and Pre-washer, Digester and Washer, Chemical Mix, Bleach, Chemical Storage and Refiner Buildings; Zone 3, the Machine Shop, Machine Room and Finishing Buildings; Zone 4, the Storehouses, Converter Building and Cafeteria; Zone 5, the Wooden Fibre Warehouses, Boiler Room, Pumphouses, Filter Plant Machinery Storage Buildings, Of-

## Members Of One Of The Four Fire Brigade Companies



Ecusta's Fire Brigade consists of four separate companies, one for each shift. Shown above is the Shift D Company. Seated left to right they are as follows: R. Parris, J. Passmore, Paul Parris, L. Johnson, T. Hargis, Leader, Dewey Burns and H. W. Mehaffey, Pump Man. Standing left to right: H. W. Drake, Pumpman, Elmer Gevedon, W. W. Sizemore, Paul Owen and G. Austin.

fice, Gate House and Greenhouse.

A fire alarm is sent in by breaking the glass in the alarm box with the hammer which is attached for that purpose. This automatically sets the mechanism in operation which sends out the signal over the fire alarm and regular auto-call systems. A fire alarm signal is readily distinguished from an ordinary auto-call signal as it is always preceded by ten short rings. It is repeated four times by bell and then three times by the Boiler House whistle.

The Fire Brigade consists of fifty-four members selected from among the employees of the Machine Shop, Electric Shop, Filter Plant, and Champagne Paper Corporation. Each shift has its own company subdivided as to leader, fire fighters and pump men. The Brigade is constituted as follows:

Supervisor, Herbert F. Finck; Ass't. Supervisors—R. J. Kappers, E. L. Happ, Luke Harrison. Inspectors—Ernest Burch, general and D. J. Luther, Fibre Warehouses.

Shift A—L. Bagwell, leader, F. Saunders, A. Holden, A. Hubbard, Forest Lance, Robt. Marcum, W. O. Morris, T. L. Conley, R. A. Hogan and B. Lancaster.

Shift B—R. Fulton, leader, C. B. Frick, Clive Allen, C. Gardner, E. O'Shields, H. Edmundson, W. E. Mull, S. Crisp, K. Trefzer and S. Harrington.

Shift C—E. Vassey, leader, J. S. Parker, B. Allen, Ed McCall, Joe Brown, J. Metcalf, J. Mehaffey, B. Jones, H. D. Gordon, M. Nicholson.

Shift D—T. Hargis, leader, R. Parris, P. Owen, L. Johnson, P. Parris, G. Austin, D. Burns, J. Passmore, E. Gevedon, W. Sizemore.

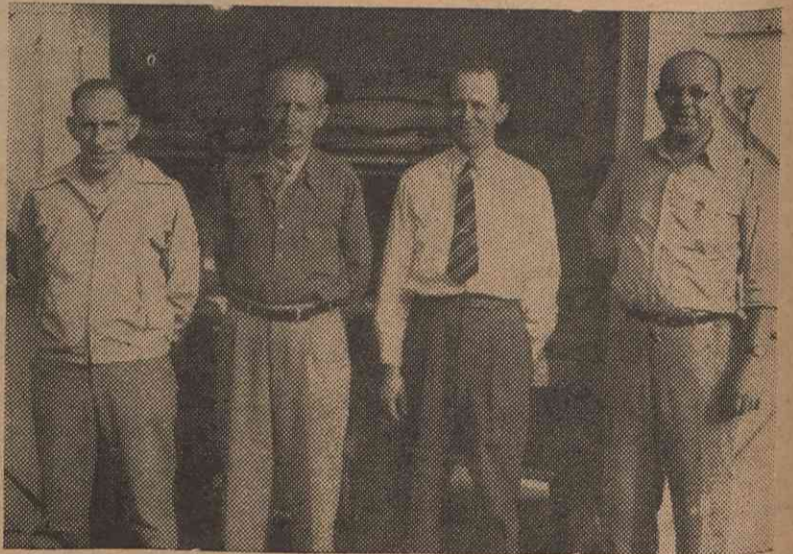
Pump Men—Electric—H. Kolman, R. Kuykendall, J. Connell and H. Mehaffey. Gasoline—J. Mitchell, W. E. McLean, H. Meese and H. Drake.

Drills are held as frequently as practical and in accordance with weather conditions.

The latest and best obtainable fire fighting equipment has been provided for the Brigade.

This consists of two centrifugal fire pumps, each capable of delivering 1,500 gallons of water per minute at 100 pounds pressure which is equivalent to 12 good

## Ecusta's Fire Brigade Supervisors



Here they are! Reading from left to right—E. L. Happ, Herbert Finck, Luke Harrison and R. J. Kappers. These men have devoted a great deal of time and study to the prevention and fighting of fire.

fire streams. One pump is driven by electricity and takes its water from the river, the other is driven by a gasoline motor and takes its water from the reservoirs. Twenty-eight fire hydrants are distributed over the mill yard and for each there is provided from 150 to 400 feet of 2½ inch hose, a total of 4,935 feet, together with 300 feet of 1½ inch and 200 feet of ¾ inch hose, and all other necessary equipment such as playpipes, spray nozzles, Poweron nozzle, axes, lanterns, hose shut-off, gas and oxygen masks, six regulation fire ladders and a No. 50 CO2 wheeled engine, etc.

Many of the buildings are fireproof construction throughout, the remainder are of semi-fireproof construction and are protected by automatic sprinklers, the Fibre Warehouses by dry systems, the others by wet systems. More than 5,000 sprinkler heads are now in use. The fire tank has a capacity of 100,000 gallons. The bottom of the tank is 100 feet up, the top 130 feet, as high as a 13-story building.

First aid fire fighting equipment has been installed in all buildings where needed. This equipment

## Ecusta's Fire Chief



Herbert Finck, who is the supervisor of the Fire Brigade, has been in charge of the company's fire department since its organization.

The Taj Mahal at Agra, India, was begun in 1632 and completed in 1650.

Turn To Page Fifteen