

# Group Singing Enjoyed By All At Ecusta's Oct. Party

## Impressive Stage And Lighting Gave Color To Occasion

A novel and enjoyable feature of the October party given for Ecusta employees in the cafeteria Thursday evening, October 22, was the singing by those present of a number of popular and tuneful melodies, which were led by the Ecusta chorus.

The stage had been tastefully decorated with shocks of corn, autumn leaves and pumpkins. A heap of wood had been placed on the stage, beneath which were concealed light bulbs sheathed in red. When the cafeteria lights were cut off the beams from the woodpile resembled a cozy camp fire while the glowing pumpkins suggested the approach of Hallowe'en. The chorus was grouped around the campfire as it led the singing of numbers suggested by Mr. Eversman. Those present joined heartily in the singing of patriotic, sentimental and religious songs.

Credit for the impressive lighting arrangement and the sound effects which added so much to the enjoyment of the program is due to Wayne Conn, who in this way has contributed materially to previous parties.

Square dancing was enjoyed both before and after the singing. The Ecusta string band furnished the music. Quite a few of the guests came dressed in costume and several of those present elected to play bridge instead of dancing.

## Champagne Teams

—From Page One—

Champagne 3, Control 0; Endless Belt 3, Office 0.

Results of games, Oct. 27, men's—Champagne 3, Control 0; Machine Room 3, Office 0; Maintenance 3, Refining 0. Oct. 28 women's—Champagne Stars 3, Pin Setters Delight 0; Office 2, Finishing 1; Endless Belt 2, Control 1.

A list of the teams and bowlers is as follows:

### Men's Ten Pin League

Champagne—James Dunne, captain, Frank Israel, Ted Schepkowski, Chris Rogers, Walter Straus, H. Golderer and Landeck.

Maintenance—Emil Vassey, captain, Wayne Conn, Jessie Pressley, Bruce Reynolds, Robert Kappers, Morris, Bradley and Parris.

Control—Bob Matthews, captain, Doyle Wells, Grover Suttles, Dixon, Grise, Robert Head, Marjorine Bevacqua, Harris.

Machine Room—Jimmie Poteet, captain, Luther Callender, Gilbert Coan, Walter Wood, Paul Simpson, Burdet Teague.

Office—Paul Plaut, captain, Pete Eberle, Emmett Barker, Ernest Burch, Henry Newbury, Howard Schmidt, George Huskamp.

Refining room—Al Montville, captain, Jack Rhodes, Bill Cobble, Kermit Reece, White, Newman.

### Women's Duck Pin League

Champagne—Anne Morris, captain, Lucille Lockman, Maymie Reynolds, Mary Merrill and Martha Taylor.

Control—Lucy Clarke, captain, Louise Jones, Frances Henderson, Anna Meixel, Edith Ridenhour, Eunice Waldrop and Thelma Glazener.

Finishing—Sue Allen, captain, Perleen Blankenship, Mae Freeman, Helen Russel, Margaret McKinney and Gladys McKinney.

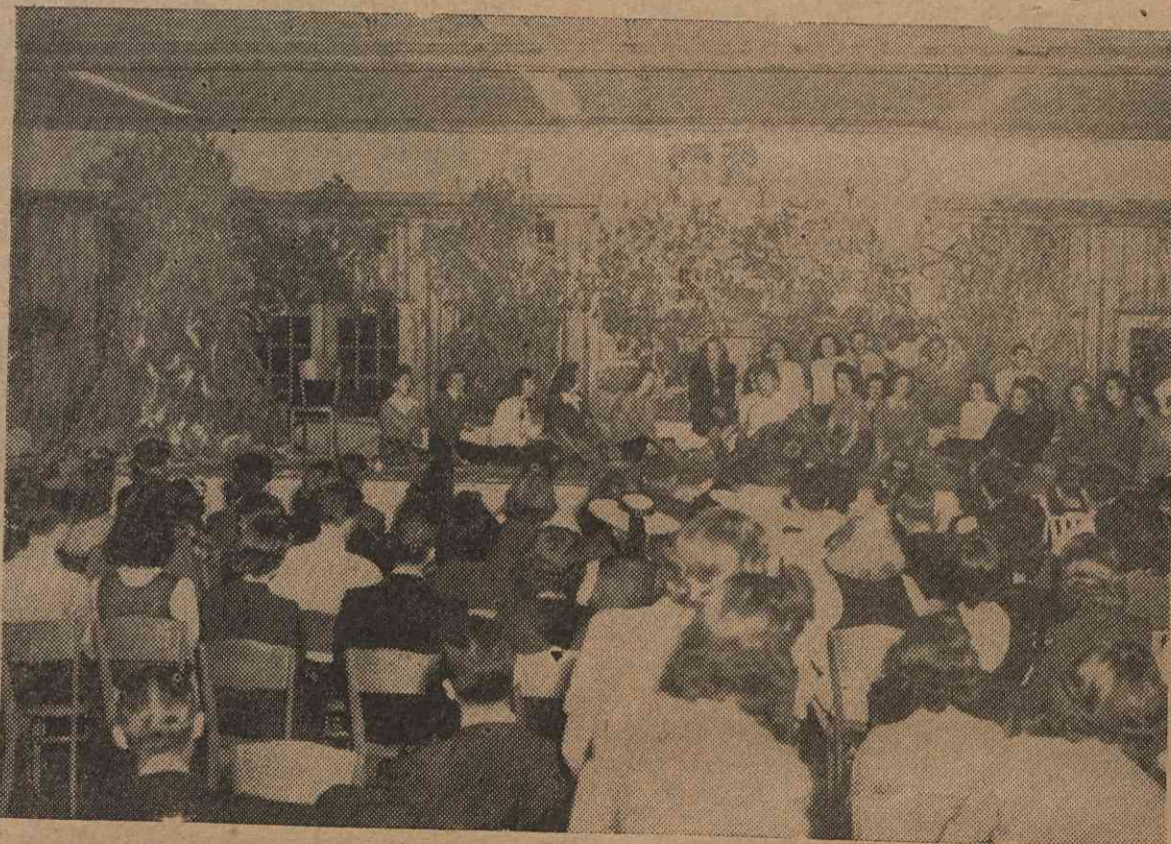
Endless Belt—Mary Sue Thorne, captain, Nelle Gallamore, Eloise Matthews, Alba Drake and Grace

## Not Spooks—Just Ecusta Employees Attending Party



Adding to the atmosphere and gaiety of the October party was a large number of persons dressed in costumes. Shown above are several of them. For identification lines it is suggested that you try your hand. Ye editor is not sure he knows them via present dress!

## Campfire Singing Is Enjoyed In An Autumn Setting



Of course everybody had a good time. Who wouldn't and doesn't enjoy sitting around a cozy campfire at nights, when the lights are low, and singing good old familiar songs. The above photo was made during the October party. Sitting around the campfire and leading the singing are members of the chorus.

Allison.

Office—Roberta Bryant, captain, Mildred Carpenter, Kate Rheberg, Pat Grimshawe, Gladys Burnette, Katherine Anderson and Margaret Collins.

Champagne Pin Setters Delight—Eileen Nelson, captain, Frances Orr, Charlotte Cox, Dot Mitchem, Mary L. Fort and Louise Rigdon.

### LEAGUE STANDINGS

#### Men's Division

Team	W	L	Pct.
Champagne	9	0	1.000
Maintenance	8	1	.888
Machine Room	6	3	.666
Control	3	6	.333
Office	1	8	.111
Refining	0	9	.000

High team match, Champagne,

2450. High team set, Champagne 911.

High individual match, Eberle 576. High individual game, Eberle 225.

#### Women's Division

Team	W	L	Pct.
Champagne	9	0	1.000
Endless	7	2	.777
Finishing	2	4	.333
Office	2	7	.222
Control	1	5	.166
Pin Setters	0	3	.000

High team match, Champagne 1,402. High team set, Champagne 489.

High individual match, Collins 318. High individual game, Collins, 130.

## GEORGE S. MILLINGTON VISITED PLANT RECENTLY

It was a pleasant surprise for many of the folks in our plant to greet Mr. George S. Millington, assistant secretary, associated with our Vice-president, Mr. Walter V. Landeck, of the New York Office. This was Mr. Millington's first visit to the plant and he said he certainly felt that it was worth while after spending several days in the various departments of the plant.

He was entertained while here by many of his former New York associates now residing at Pisgah Forest, and they were all very glad to have him here.