

Safety And First Aid Are Stressed At Ecusta

COMPANY HAS A COMPLETE FIRST AID DEPARTMENT

By STAFF WRITER

Realizing the importance of proper medical attention in case of injuries as well as in sickness, the management established an up-to-date First Aid Station and same was in operation when the first cigarette paper rolled off the paper machines in August, 1939.

Up until August, 1941, only one registered nurse was employed by the plant and her hours were from 8:00 a. m. to 3 p. m., six days a week. A plant physician was at the Medical Department approximately two hours on each of the above six days and subject to call in case of emergency. In August, 1941, with the mill expansion being completed and many more employees being added to the personnel, three extra registered nurses were employed and the First Aid Station was put on a schedule of 24 hours a day, seven days a week. The primary purpose of this move was to furnish adequate medical attention to all employees, regardless of which shift they might be working.

Dr. Marshall, Physician

As an added feature to our medical set-up, in August, 1942, Dr. Otis Marshall, who spent ten years with the American Red Cross as instructor in first aid and safety and who hails from the hills of Virginia, was engaged as full time plant physician. At this time, the services of Dr. W. P. Herbert, who is one of the leading surgeons of Asheville, was added to the already up-to-date medical set-up, and he spends approximately two hours at the plant each Tuesday afternoon, holding a clinic for all employees who wish his medical advice, whether their ailment be due to sickness or injury. He is also subject to immediate call in case of an emergency.

Healthy And At Work

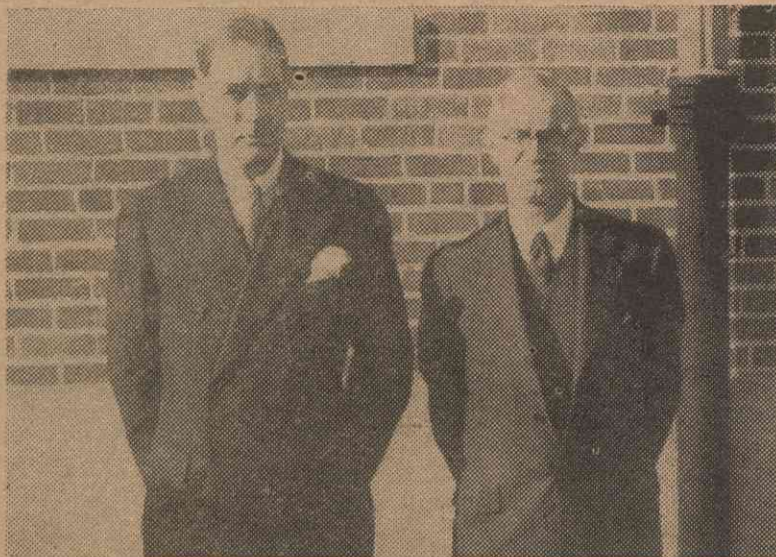
With the sole objective of the Medical Department being to try to keep the employees healthy and on the job, numerous free services are offered along this line. Among these are cold vaccine shots, treatment of any sickness or injury, whether same occurs on or off the job, and physical check-ups or medical advice at any time. A complete visual survey was made during 1941 and recommendations made to those employees needing glasses or needing to have their present ones changed.

All applicants for work are required to stand a physical examination before going to work and any minor ailments or conditions that might need correcting are discussed with them at that time.

Dr. Marshall is on the job and available for consultation from around 8:30 a. m. to 5:00 p. m. daily the first five days of the week and from one to three hours on Saturday and Sunday. He is subject to immediate call day or night in case of sickness or injury. His medical practice is confined entirely to the plant and he can always be reached at once.

Boasting a medical department that is fully equipped with the latest conveniences, few emergencies arise that cannot be taken care of inside the mill yard. Those necessitating further care, such

Here Are Our Two Company Doctors And Safety Director



DR. W. P. HERBERT, of Asheville, is a consulting surgeon and holds clinics at the First Aid Station every Tuesday afternoon. He is a member of the medical staff at the local hospital and the Mission hospital in Asheville. He graduated from the University of Virginia.

DR. OTIS MARSHALL, of Brevard, is our plant physician. He has been with us since September, 1942. Prior to that time, he spent 12 years with the American Red Cross as instructor in First Aid and Safety and formerly practiced medicine in Culpeper, Va., for several years.



H. E. NEWBURY is doing an outstanding job as safety director. He came with the company in January, 1941, from Ware Shoals, S. C., where he was personnel and safety director for the Ware Shoals Manufacturing company for over 10 years. Hank is a former league ball player.

as X-rays, hospitalization or major operations, are sent to the Community Hospital in Brevard or to other good hospitals in nearby towns.

A complete record is kept of all persons receiving treatment in the First Aid Station, and you will find the entire personnel of this department willing and anxious to assist the employees in any way possible.

Many Safety Devices

Now we come to the angle of accident prevention work. It is the duty of the Safety Director to assist all department heads and employees in the elimination of personal injuries. Every effort has and is being made at present, to see that wherever possible, all open belts, gears, nip-points, openings in floors and any other condition presenting a hazard to those working in the vicinity, be guarded as they should be. All protective equipment such as gas masks, safety caps, safety goggles, rubber gloves, safety belts, dust and paint fume respirators, come under his supervision and are supplied and kept in good condition at all times. It is also his responsibility to meet with the members of the Safety Committee once a month and see that recommendations for the welfare of the employees are carried out. Investigate all injuries and try to eliminate the possibility of their recurrence, distribute safety posters to those in charge of the various bulletin boards in the mill, see that all new employees are furnished with a set of safety rules before going to work, keep a daily analysis of all cases treated in First Aid and send a copy of same to each department head, make a monthly analysis of the different types of injuries by departments so that the frequency and severity rate of injuries can be discussed with the various ones affected, as well as furnish a report to the Federal Government and to our insurance carrier, make regular inspections throughout the mill and grounds and have all unsafe conditions corrected, see that necessary caution and warning signs are erected where needed.

—Turn To Page Four

Superintendent Of First Aid Station



As usual, here's Mrs. Sue A. Bowman hard at work at her desk, and if you look carefully you'll observe that she is surrounded by First Aid equipment and supplies. Mrs. Bowman is a graduate of the Mission hospital in Asheville. Her husband is in service.

Members Of First Aid Nurses' Staff



Sure they're really pretty! And smiling, too! On the left is Mrs. Thesta S. Bishop who has been at Ecusta since August, 1941, and her husband is now in service. In the center is Mrs. Betty M. Combs, whose husband, Bryan Combs is in service. She is a graduate of Mission hospital. On the right is Mrs. Inez Smith, another war widow, who has been with Ecusta since Nov. 1942. She is a graduate of Britt Infirmary at Eufaula, Ala.