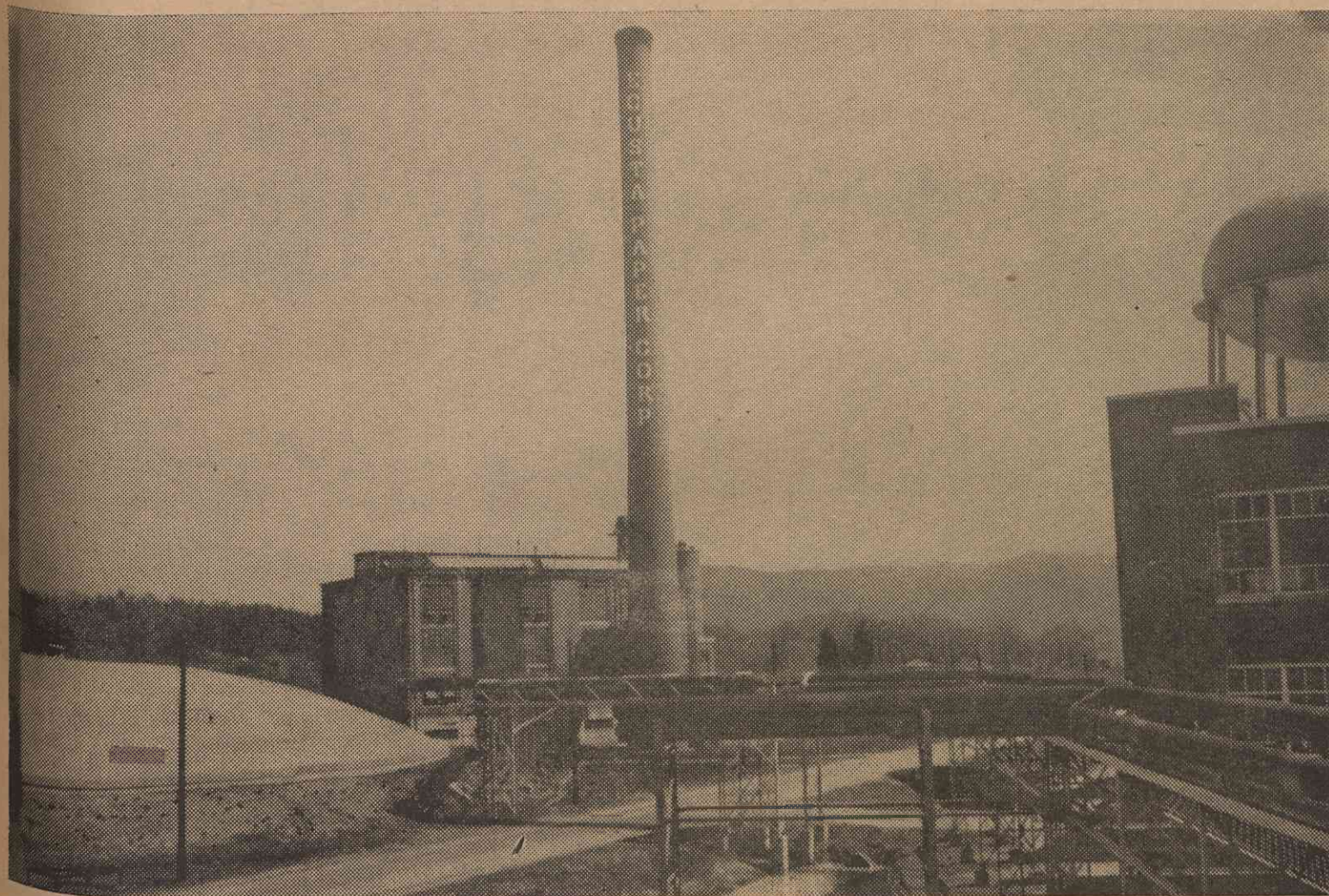


Here's What Makes Wheels Turn Throughout The Plant

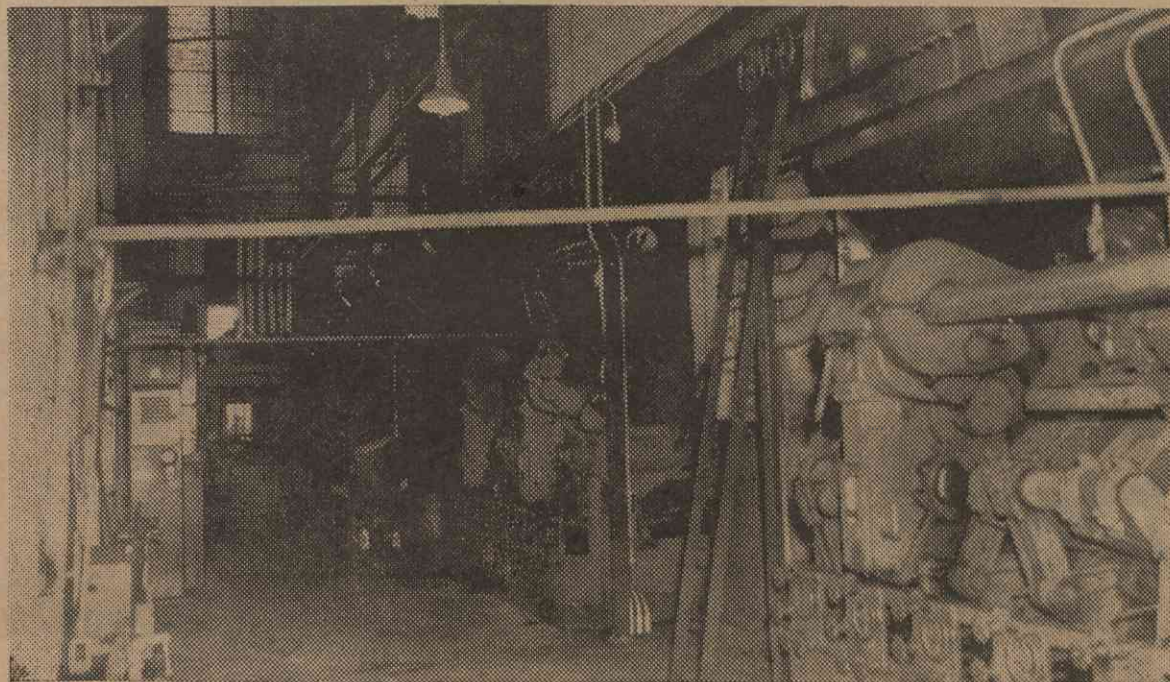


Word Description Of Photos Shown

The picture above shows the Boiler House as seen from the Turbine Room showing 700 feet long overhead 8-inch connecting steam lines. The chimney is 10 feet in diameter at the top, believe-it-or-not, and 225 feet in height.

The photo at the left is a view of the control panel at the Boiler house. Standing by is Tom Evans, senior operator.

The scene at the bottom shows the operating floor depicting the front boilers. Coal hoppers and stoker drives are clearly shown.

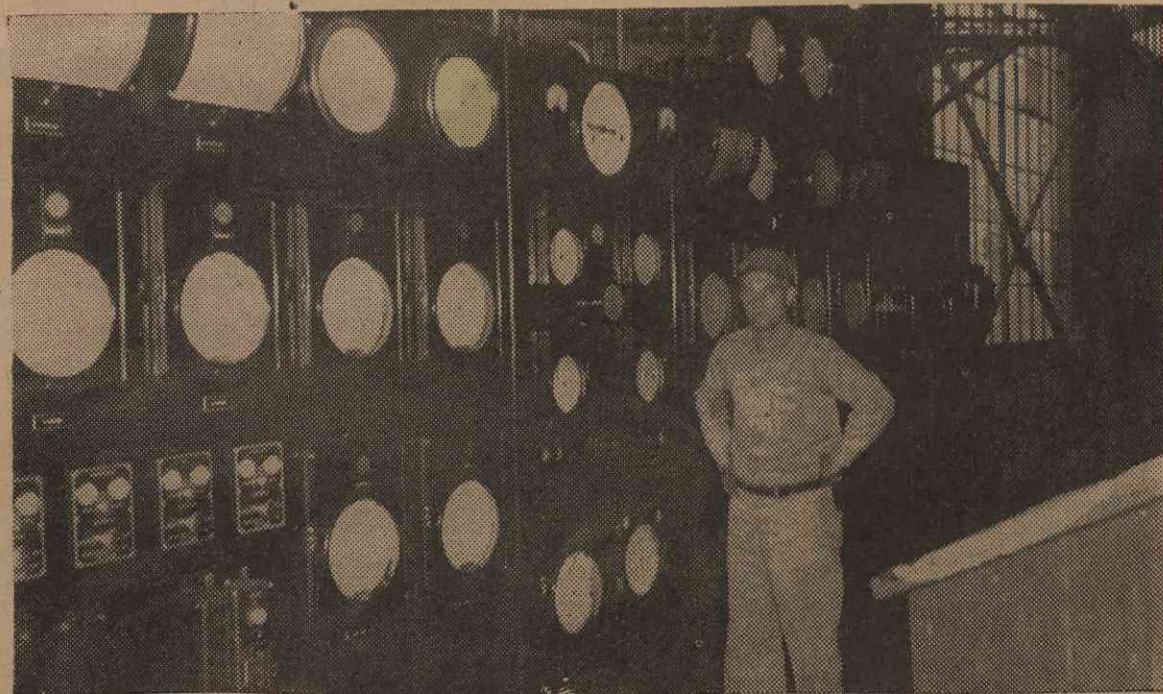


BOILER, TURBINE

— FROM PAGE EIGHT —

in all boiler installations and in this respect Ecusta is no exception. To prevent scale and corrosion, every drop used must be treated.

As the first step in scale prevention, all fresh water added must be passed through softeners of which there are four. These contain Zeolite sand which has the peculiar property of replacing the undesirable calcium and magnesium in the water with harmless sodium. When the effectiveness of the exchange is sufficiently decreased, the Zeolite must be regenerated with strong brine solution. Phosphate and caustic soda are then added as a further control, after which the fresh water makeup enters the deaerating heaters where it mixes with the condensate return from the mill and turbines. The two heaters have a combined capacity of 160,000 pounds per hour. To prevent corrosion, the feed water is preheated here to its boiling point which releases the oxygen and CO-2 dissolved in it. As it leaves the heaters, sulphite is added to control whatever oxygen is left. The boiler



—Turn To Page Twelve