

Champagne Bowlers Are Leading In Duck Pin League



Endless Belt Girls Are Holding Team Set Honors



Pin Setters Delight Bowlers Are Mighty Good Sports

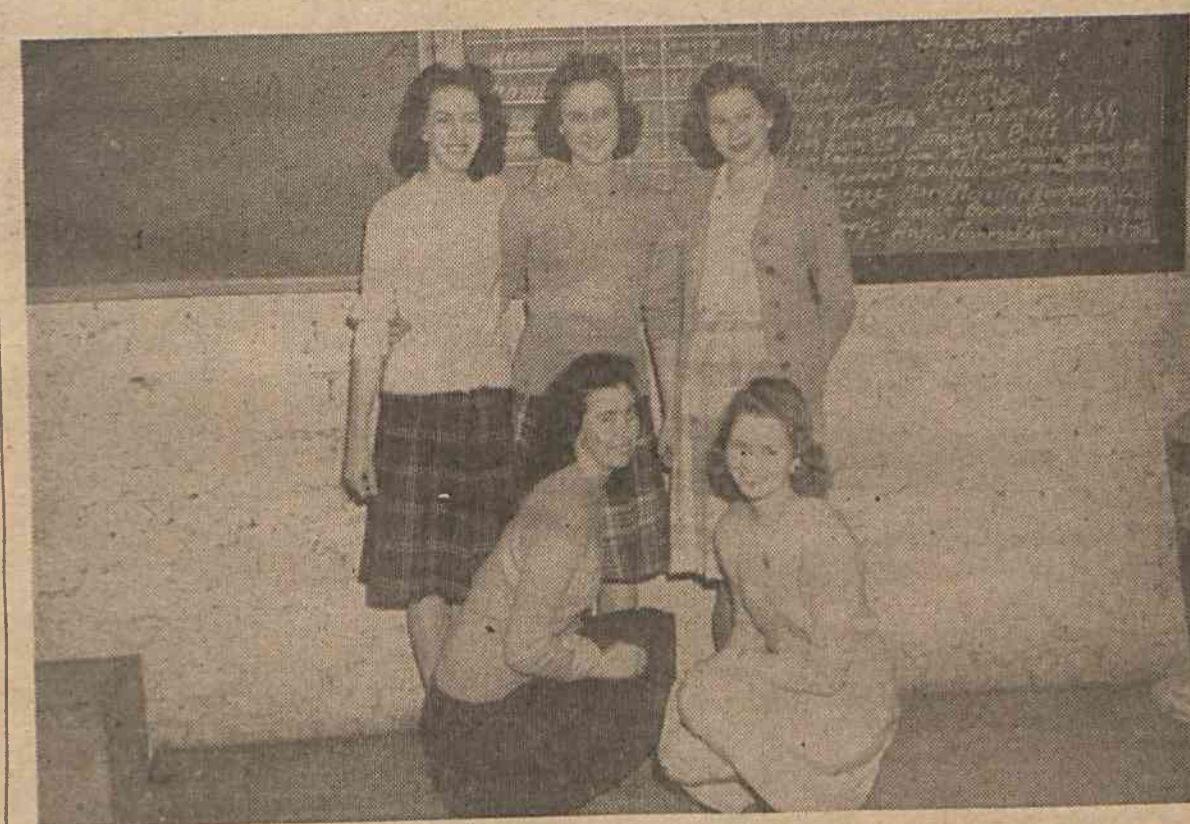


These Bowlers, Control Team, Are Close Behind The Leaders



Captains Of The Six Teams In Women's Duck Pin League

These Finishing Room Girls Are In Fourth Place



These Office Girls Really Have A Good Time Bowling



WHO'S WHO On Our Duck Pin Teams

The women's duck pin league season will end soon, in fact next Wednesday night, plus a few make-up games. This has been a most successful season and the members of all six teams have had a good time and have afforded amusement and entertainment for spectators, as well as for themselves. Champagne, leaders for the entire season, will more than likely win out, but they are being closely followed by Control. Mary Merrill, of Champagne, has the highest average for the season and is followed by Anne M. Misenheimer, also of Champagne. Frances Jones, of Control, is in third place.

TEAM CAPTAINS—reading from left, front row: Frances Orr, former captain of Pin Setters Delight who has gone to Florida to be with her husband and is succeeded by Eileen Nelson, acting captain, and Alba Drake, Endless Belt. Standing are Pearlene Blankenship, co-captain of Finishing, Gladys Burnette, Office, Anne M. Misenheimer, Champagne Stars, and Lucy Clarke, Control. Gladys McKinney, co-captain of Finishing team, was absent when the picture was taken.

CHAMPAGNE—Front row: Mary Prince, and Mary Merrill who boasts high individual average and high individual match. Standing are: Ruth Jones, Anne Misenheimer who has 2nd high individual average, and Maymie Reynolds. Those absent when the picture was taken are Martha Taylor, Marie Nelson, Bernice Ledford.

CONTROL — Left to right: Sue Allen, Gladys Teague, Beatrice Roberts, Lucy Clarke, Anna Melkell, and Frances Jones who holds thrd high individual average. Absent when the picture was taken were: Louise Bruce, Myrtle Mae Spain, Hazel Smith Wren, Dot Singletary.

ENDLESS BELT — Reading from left to right are: Alba Drake, Nell Gallamore who

bowled the league's high individual game, Elouise Marcum, Ruth Hollingsworth and Glen Allender. Mary Sue Thorne, Amanda Powell, Nelle Cairnes Loftis, and Mildred Albert were not present when the picture was taken.

FINISHING — In front are Betty Stewart and Pearlene Blankenship. Standing: Bobbie Morona, Maxie Hollingsworth and Willie F. Blankenship. Absent when the picture was taken were: Gladys McKinney, Captain, Margaret McKinney, Alberta Watkins, Virginia Burl, Mildred Frisbee, Edith Reed and Mary Jo Ramsey.

PIN SETTERS DELIGHT—Front: Frances Orr and Willie Prince. Standing: Alma Smith, Frances Webb, Violet Wilber. Members of the team absent were: Hazel McKinney Reese, Eileen Nelson, Bitha Jackson, Charlotte Cox, Lois Osteen, Joyce Mann, Georgia Station.

OFFICE — Reading left to right: Felica Edwards, Eunice Waldrop, Hicks Scruggs, Gladys Burnette and Ethel Snelson. Mildred Carpenter, Margaret Collins, Kitty Russell, Ina M. Lyday, Leah Pettit, Helen Smith and Connie Fendley were not present when the picture was made.