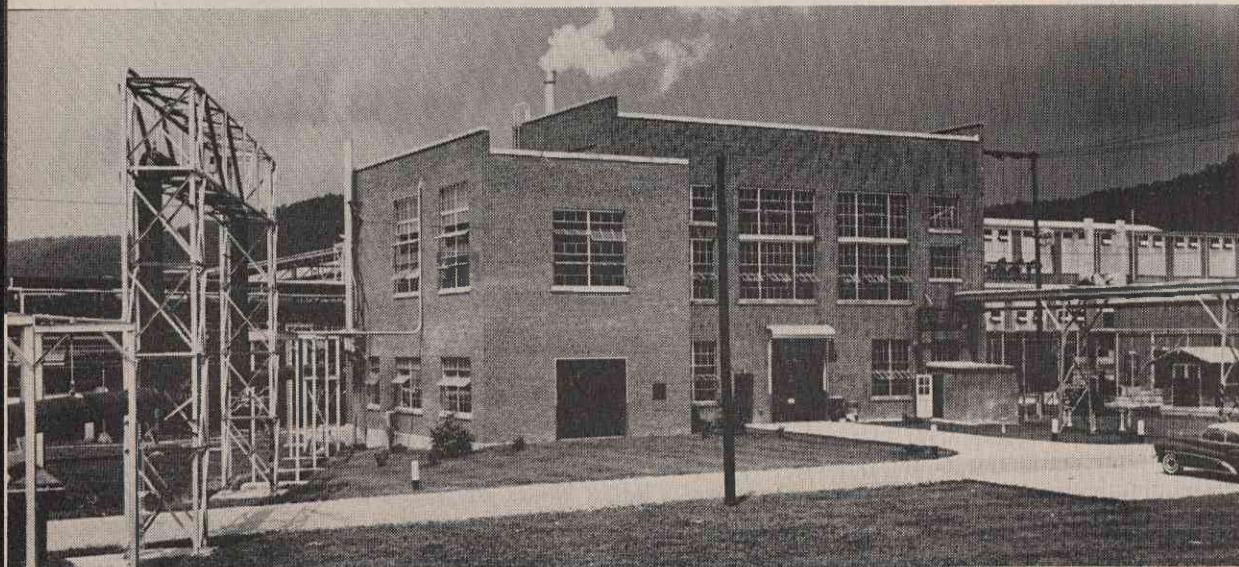


*Lighting off one of the four burners of the 115,000 pounds per hour boiler with oil. When lit pulverized coal supply is turned on and oil is shut off.*

pulverized fuel boilers. Two of these, installed in 1948, are rated at 80,000 pounds per hour each and the last one, installed in 1952, at 115,000 pounds per hour. These are operated at 620 pounds per square inch and 750° F.

All coal used comes from Virginia, Tennessee and Kentucky. The purchase of good quality at low cost is assured by analyzing representative samples taken from cars as they are received. These analyses are made at the Filter Plant.



*Turbine Room looking NW showing overhead steam lines, at left, which convey the steam from the Boiler House.*