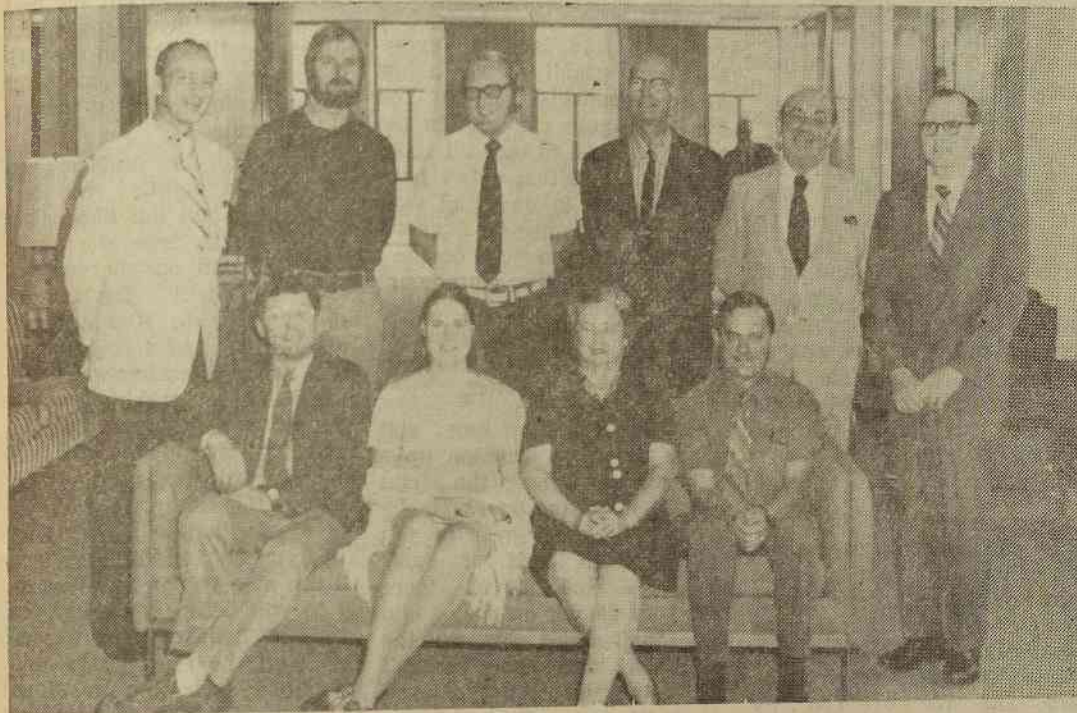


## Brevard College Opens 1973-74 With Increased Enrollment



Sitting: Derry Koob; Mrs. Marion Whatley; Miss Jane Wrigh; Peter Burger. Standing: Dr. Robert Davis; A. Larry Evans; John Meyerhoff; Dr. Jlian Little; Alfred Ruer; Dean Lovely.

Brevard College began the 1973-74 academic year with the arrival of over 300 freshman Sunday, August 26 to begin orientation. Sophomores returned on Tuesday, August 28 with registration held on Wednesday, August 29 at 8:00 a. m.

"We are especially pleased with a substantial increase in our enrollment for this year", stated Brevard President, Dr. Robert A. Davis, "our freshman class is well prepared and comes from some 20 states and several foreign countries. The prospects are bright for a very good year at Brevard College."

The College began its 39th year on the local campus with the physical plant virtually completed. For the first time in several years the sounds of a construction project underway did not greet the new student body. Most recently completed was a major renovation of the Dunham Music Building which serves the Music program for the Division of Fine Arts.

Dr. Davis announced that several new faculty members had been appointed for the current year and they are: Dr. Derry B. Koob, Biology; Mrs. Marian Whatley, Music; Miss Jane E. Wright, Librarian; Peter E. Burger, History; Albert L. Evans, Art; John W. Meyerhoff, Basketball and Physical Education; Dr. Julian R. Little, Chemistry; and Alfred Ruer, German.

Formal classes began on Thursday morning at 8:00 o'clock.

The opening Convocation for Faculty and Staff and students was held in Boshamer Gym-

nasium on Thursday night at 7:30 o'clock with President Robert A Davis giving the principal address.

Friday night featured a dance in Dunham Auditorium from 8:00 p. m. until 12 midnight.

On Saturday a "Tube" race down the French Broad River and a tour of Cherokee Indian Reservation including attendance to the outdoor drama "Unto These Hills".

Brevard College is owned and operated under the auspices of the Western North Carolina Annual Conference of The United Methodist Church. Brevard College offers a quality education to each of its students built on a sound purpose program and physical facilities.

### Christian Council

People who are always putting down college clubs should have been at the first Christian Council meeting on September 11. They would have seen and felt all the love that the sponsor, Mr. Ed Roy, the President, Anne Ralls, and the members of Christian Council put into the club.

The main objective of the Christian Council is to spread the joy and love of God throughout the community and Brevard Campus. Some of the highlights of the Christian Council are the Thanksgiving Banquet on November 20, the Christmas Banquet on December 6 and the lighting of the Christmas Tree that night at 4:45 as President Davis reads scripture. Christian Council also sponsors the Encounter Week and the Easter Sunrise Service.

So, support your Christian Council because if you need a friend you will always find one in them. Always remember to SMILE cause GOD LOVES YA!!!

### Grant Received From Charles E. Merrill Trust

Dr. Robert A. Davis, President of Brevard College, announced this week a gift in the amount of \$20,000 from The Charles E. Merrill Trust. The gift will be made a part of the Brevard College Endowment Fund, the income to be used for scholarships for students to attend Brevard College.

The Charles E. Merrill Trust was created by the late Charles E. Merrill, who in 1914 found-

ed the stock brokerage firm that eventually became Merrill Lynch, Pierce, Fenner & Smith, Incorporated. He was also one of the founders of the Safeway Stores and of FAMILY CIRCLE magazine.

Philanthropic activities played a great part in Mr. Merrill's life. He aided many educational and religious institutions and was particularly concerned

with helping promising young people through college. During his lifetime, Mr. Merrill was a benefactor of more than fifty educational and research institutions. Colleges and universities, religious institutions, and hospitals have been the beneficiaries of the Charles E. Merrill Trust which was established in 1956.

In announcing the grant, Dr. Davis stated, "Brevard College is highly honored to receive this gift from The Charles E. Merrill Trust. Our emphasis upon academic excellence and the development of sound leadership and character among our students is very much in keeping with the intention of the founder of this generous trust."

### Sims Center Of Activity

Sims Student Union operating since January of 1971, extends to Brevard students a variety of services and activities throughout the week. The post office and book store run on a regular basis of 8-5, Monday-Friday and 8-12, Saturday. There is only one mail call a day; however, the mail boxes are open 7-12 everyday. (Mail is usually put out between 10 and 12).

The campus book store stocked with school, stationery, art and gym supplies, also offers a selection of sundries. Checks are honored and (of a reasonable amounts) will be cashed Monday through Friday until 5 p. m. As for missing cafeteria meals, the Tornado Room exists, serving food and drink between the hours of 8 and 11 Monday - Friday, 11 and 11 Saturday, and 3 to 11 Sunday. The upstairs lounge and game rooms run the same hours as the Tornado Room and provide ping-pong and pool tables, board games, television and study areas.

The Student Union was created for the student's convenience; and should therefore, be treated with respect. Certain guidelines set up are: no food in the lounges, no feet on the

sofas, and no posting on the windows.

Maintained by Mr. Jim Alderman, "Mr. A", (business manager) and Coach David Campbell (student activities adviser), the Student Union stands as a good information center and is always open for suggestions or questions.

### The SUL Report

Student Union Legislature, an organization which became established in the spring of 1970, is designed to be a "clearing house" for student ideas and opinions and to be influential in making these ideas and opinions a reality.

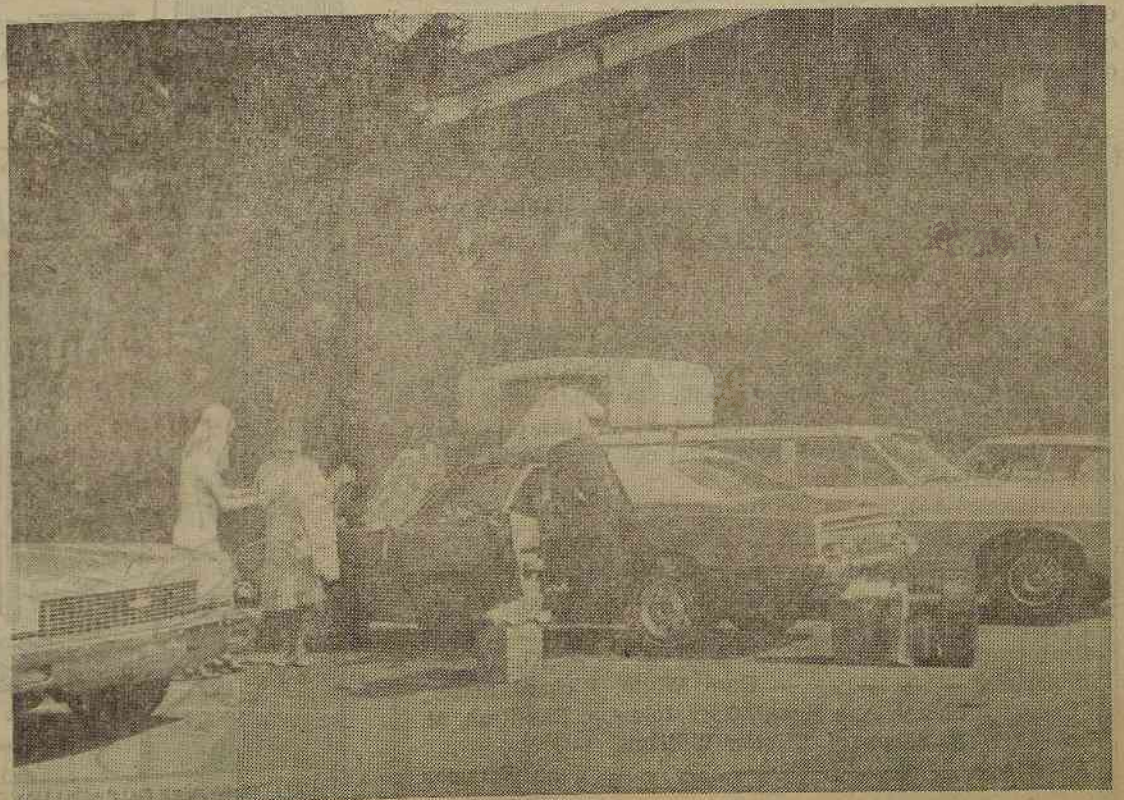
Although the success of S.U.L. has been limited, its efforts in the past have laid the foundation for adjustments within the system in the future.

Student leaders are optimistic that long-term goals will be achieved with the help of open-minded concern from the students, faculty and administration alike.

Much of this hope is placed

—Turn to Page Two

Brevard College will present William Windom in "THURBER" Thursday, October 4, Dunham Auditorium, 8:15 P. M.



Opening Day for Freshmen began with the awesome task of moving in.