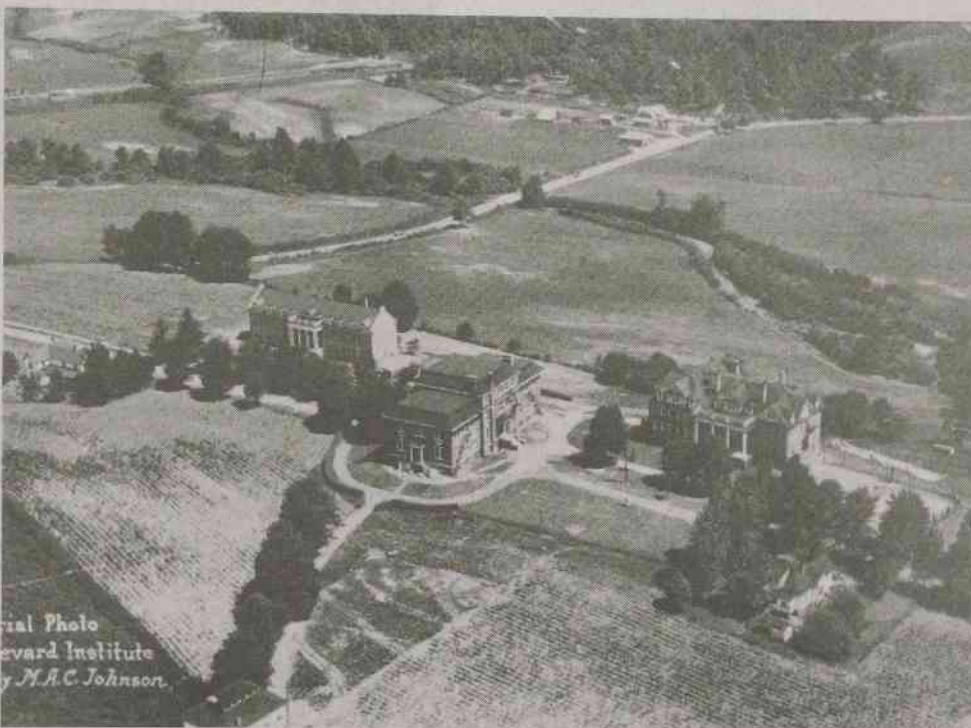


Brevard College



Within the first five years of the college, a gymnasium was built, and the girl's dorm was remodeled. Brevard even had its own marching band.

The college during the early 1920's stated that any student expecting to partake in card games, or dancing, should arrange to attend a school where such things are tolerated. Also, blue jeans were not allowed unless there was a picnic or a recreational function.



This aerial photo shows large amounts of farmland that belonged to Brevard College. The only building still standing is Taylor Hall.

Sports was also a very big deal to the college in its early years. The football team of Weaver College was known all over.

"Flea Flicker" is a play in football that they invented. It is still used today in many major colleges and by professional teams.

Male and female visitation was also strict during this time period.

If a boy had been good all week, he could spend time with his favorite girl in the parlor room with every other couple.

If the boy was extra good, he was able to go with his girlfriend, chaperoned, to Asheville to watch a well censored movie.

(Left) In the 1950's rolled up blue jeans, white socks, and penny loafers were popular dress. As for blue jeans--well, some things never change.

(Right) Business and industry were the main courses studied in the late 1800's. Since then technology has changed drastically.

Special to *The Clarion*

Original Brevard College Alma Mater

Unto Brevard, we're ever loyal
We sing to her a song of praise
She gives to us endowments royal
To guide us thru' life's endless maze.

Our college we will not forsake thee,
Nor for one moment will forget;
Thy standards in our hearts we'll cherish,
To guide us 'til our hearts we'll cherish,
To guide us 'til our sun has set.

CHOURS:
Brevard, Brevard
Our hearts rejoice
Forever and forever we will honor thee.

Special to *The Clarion*

To keep students occupied a number of clubs were established during the 1930's.

Some of the clubs were the Mnemosyneans, the commercial club, the travel club, the Delphian Society, the photonature club, the boosters club, and the Pertelote.

If students think they have it rough now, these facts show the primitive conditions students were faced with.

