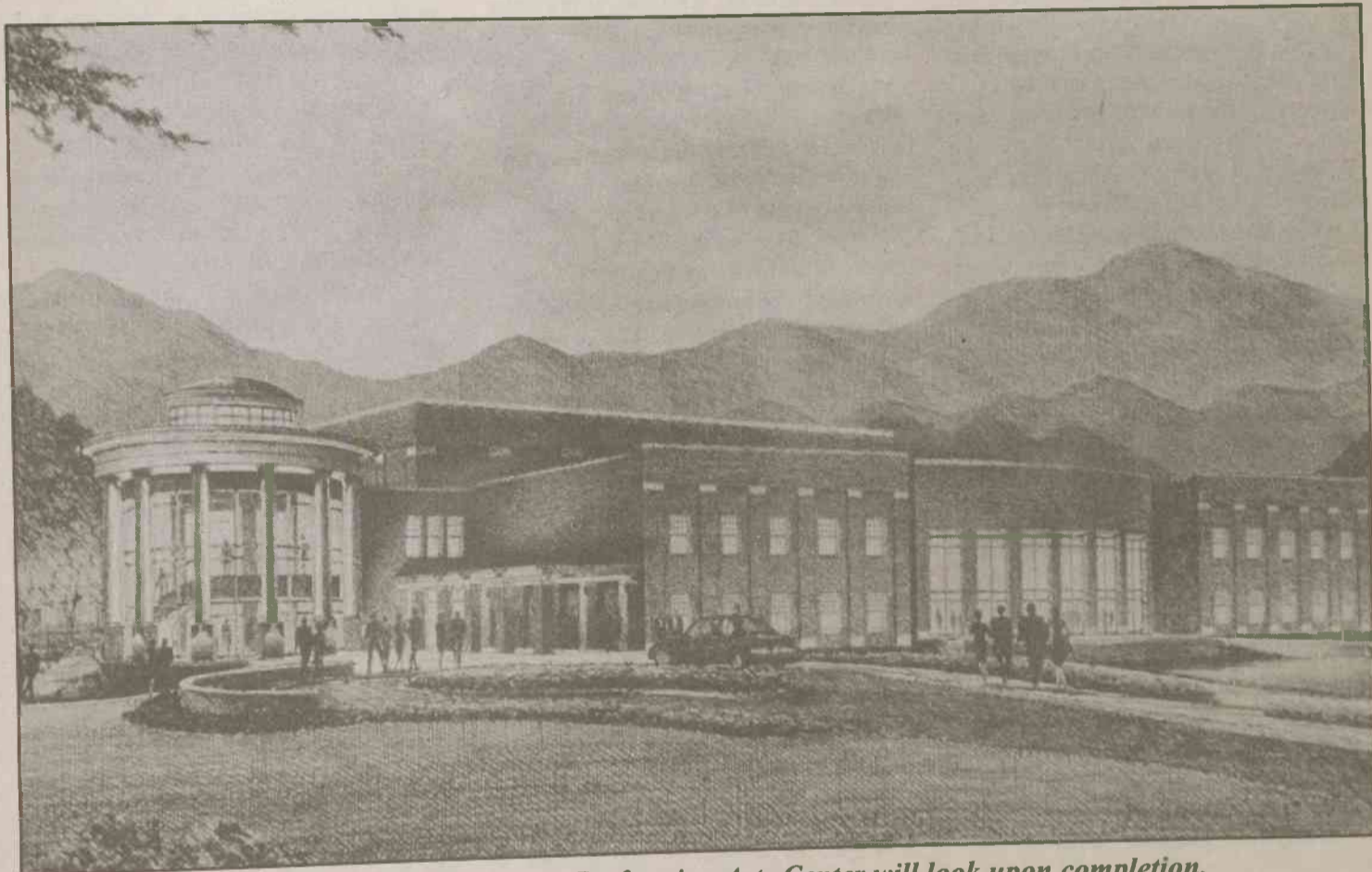


Construction on new arts center has begun

Press Release
BC News Bureau

The Paul B. Porter Center for the Performing Arts will become the flagship facility for the College's long respected programs in the performing arts, just as the college emerges as a senior college. Brevard College has one of the largest full time faculties in music of any private college or university in the South. For the past 30 years, the A.F.A. degree program has been fully accredited by the National Association of Schools of Music, making Brevard College one of only a handful of junior college programs so accredited in the nation. Plans for the new baccalaureate programs in music have been approved by N.A.S.M., and the 4 year programs in music and art, as well as environmental studies, have received full accreditation by the Southern Association of Colleges and Schools. The new center embodies Brevard College's strong tradition and its commitment to excellence in education and performance.



This artist's rendition depicts how the new Performing Arts Center will look upon completion. (Special to the Clarion)

Currently, \$5,652,100.00 in gifts and pledges for the initial phase has been received from numerous individuals, foundations, banks, and corporations. In addition, a gift of \$2,000,000.00 to endow operational expenses has been pledged.

As the building rises from the ground, the College will continue its campaign to raise the additional \$4,600,000.00 needed to complete Phase II of the construction, as well as substantial endowments to underwrite programming once the Center is completed. A separate effort to fund a large pipe organ is also underway.

Architects for the Brevard College project, first announced six years ago, are Middleton McMillan Architects of Charlotte, with John Tabor and Russell Nicholson as principal architects. Large recent designs by Middleton McMillan include the Blumenthal Performing Arts Center and Spirit Square in Charlotte, the new Law Enforcement Center and the Downtown Library Branch for Charlotte-Mecklenburg County, the headquarters building for DuPont, and the Isothermal Community College

Performing Arts and Continuing Education Center.

The contractor for the Porter Center is the J.A. Jones Construction Company of Charlotte, with Mr. William J. Klein as senior project manager. The J.A. Jones Construction Company has been associated with Brevard College for over 50 years; two of the construction company's past CEO's have chaired the College's Board of Trustees. One of the nation's largest construction companies, Jones has built major projects around the world, as well as several of the buildings on the Brevard College campus.

In order to perfect the musical properties of the Center's concert hall, the College has involved the world-renowned acoustical consultants, Kirkegaard & Associates of Downer's Grove, IL. Kirkegaard's list of recent credits include: The San Francisco Symphony's Davies Hall; the Chicago Symphony's Orchestra Hall; the Grosser Musikvereinssaal in Vienna; the Schnitzer Concert Hall in Portland; the Ordway Music Theater in St. Paul, MN; and the Duncan Recital Hall at Rice

University in Houston.

The design of the Porter Center for the Performing Arts will be a distinguished addition to the prevailing colonial revival architecture of the College campus. The exterior, and much of the interior will be rendered in brick with traditional colonial white details, including a distinctive classical entrance pavilion adjacent to the College's beloved King Creek.

The Center will rise above the 100-year flood plain on the banks of the creek at the northwestern corner of the campus. It eventually will be shielded from North Broad Street by plantings designed to recreate a Southern Appalachian forest. Another landscaping feature on the southeast corner of the site will be a naturalized wetland area that will serve as a filtering pond for water draining from the Center and its parking areas. Parking for the facility will be shielded from sight by landscaped earthen berms and plantings.

All in all, the Center will extend dramatically Brevard College's already extensive range of performance and teaching opportunities for the faculty, students, and the community of Brevard and Transylvania County.

Construction costs for the Center were included in the College's Building for the Future Campaign that was conducted between 1990 and 1994. With a goal of \$16,000,000.00 and commitments of \$20,000,000.00, the campaign successfully ended 6 months ahead of schedule. Pledges and donations restricted for the Center did not meet projected costs. A total of \$4,000,000.00 was pledged and represented more than half of the funds needed to cover construction costs.

