



Volume 65: Issue 5

Brevard College

For hearts and minds as large as the mountains.

Friday, April 11, 1997

Dr. Charles P. Teague is elected president

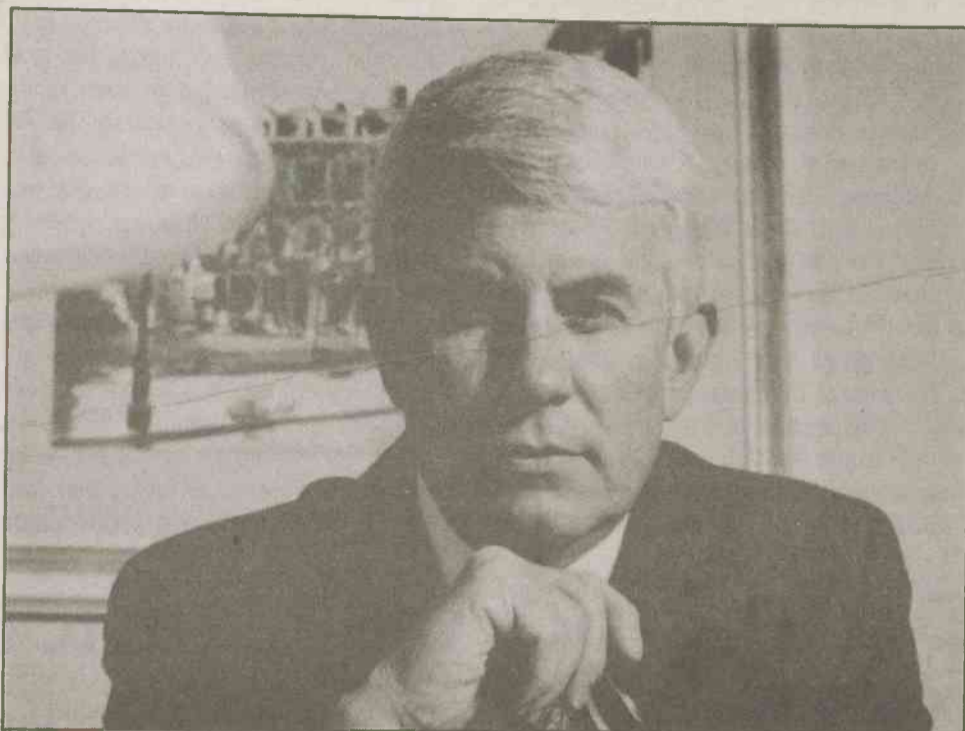
Press Release
BC News Bureau

The next president of Spartanburg Methodist College will be Dr. Charles Porter Teague, a veteran dean and professor of religion at Brevard College in Western North Carolina, where he currently serves as senior vice president and dean of faculty.

Spartanburg Methodist College Board Chairperson, Phillis Delapp, announced Dr. Teague's election following a meeting of the college's Board of Trustees on Wednesday morning, April 2, in Spartanburg, S.C. Teague will assume his new office in July 1997, following the retirement of President George D. Fields, Jr., who has headed the college since 1976.

"It is a great honor to be selected as the 6th president of Spartanburg Methodist College," said Teague. "Although it is difficult to leave my *alma mater* and our many friends at Brevard College and in the community, I look forward to the challenges and opportunities which lie ahead. Filling the shoes of President Fields is the greatest professional challenge I have ever faced. I am confident that with the help of the trustees, faculty and staff at Spartanburg, the College will flourish and grow as we move into the 21st Century."

Founded in 1911, Spartanburg Methodist College occupies a 110-acre campus on the outskirts of Spartanburg.



Dr. Teague, an alumnus of Brevard College, has been a part of the campus academic life for thirteen years. (Photo by Tom Nebbia)

It offers a two-year curriculum leading to associates degrees, including an emphasis in nursing. It currently has approximately 65 faculty, over 800 students, and 8,000 active alumni.

Born in 1945 in Asheville, Teague earned his A.A. degree from Brevard College and his B.A. degree from High Point College. He received his Master of Divinity and Doctor of Ministry degrees from the Candler School of Theology at Emory University and

pursued postdoctoral studies at Princeton Theological Seminary and the University of North Carolina at Greensboro. Ordained as a minister in Western North Carolina Conference of the United Methodist Church, he served briefly in an active ministry, then spent twelve years at High Point College (now University) as chaplain and professor in the department of religion and philosophy.

In 1984 Teague returned to Brevard

College as chaplain and professor of religion, was subsequently named its outstanding teacher, and eventually served in virtually every academic leadership post at the college, from tenured professor to chairman of the humanities division, acting dean of the college, executive director of continuing education, dean of academic planning, vice president of academic affairs, and dean of faculty. He frequently led workshops in leadership development. His hobbies include golfing, woodcarving, and fly-fishing. His wife, Daune Ward Teague, is an elementary school teacher in the Transylvania County Schools. Their daughter, Julie, is a senior at Elon College.

About Teague's new post, Brevard College President J. Thomas Bertrand commented, "We rejoice in this new opportunity for our friend and colleague, though we will miss him. Dr. Teague has brought high standards, balance, and good judgment to his work over the last 13 years at Brevard College, where he has recently led our faculty through a dramatic curricular transformation as we have become a four-year college. It has been one of the privileges of my academic life to work side by side with this fine man. He is an excellent example of how our United Methodist colleges continue to raise up excellent new leaders, ready to take on the challenges of leading our institutions into the future."

Brevard launches expeditionary learning

Windy Gordon
Psychology Professor

Brevard College, in partnership with businesses and individuals from Brevard and Transylvania County, is pleased to announce the selection process for our inaugural expeditionary learning semester. For the fall semester of 1997 the College will send seven individuals, as teachers and students, on a river journey from the birthplace of the French Broad River in Transylvania County to the city of New Orleans at the mouth of the Mississippi River. Through the trip the group will study the rivers, meet the people who reside along the rivers, speak on behalf of the rivers' place in our environment, and

marvel at seeing 2000 miles of our country from the seat of a kayak.

Participants in this trip will be expected to continue their learning throughout the trip. The students will develop individual study programs to be

.....
"For the fall semester of 1997 the college will send seven individuals on a river journey."
.....

approved by the faculty from their major areas. This academic work must be integrated into the process of traveling 20 to 30 miles per day in a

kayak. Broad interdisciplinary plans for this coursework are preferred.

The participants will also be teachers at the 60 to 70 programs built into the itinerary for this trip. Along the four rivers the group will identify partner communities within which they stop for evening programs. While each stop will be brief, filling only one evening on the journey, the content of the presentations and the skill of the presenters must be top notch. Thus, the participants must be comfortable speaking to groups, even very large groups, and dealing with reporters from both print and broadcast media.

Finally, a trip of this distance will certainly place physical and emotional demands on everyone. Each participant

must be willing to prepare for 100 days of paddling six to ten hours per day. Expertise in kayaking is not a prerequisite but the participants must be comfortable around the water and with the idea of spending three months on rivers. As the group approaches New Orleans the Mississippi River will be very large and very powerful. The group must be physically and emotionally prepared to deal with the real risks of that environment.

The College invites all interested students to submit a letter of application to be considered for membership in this trip. The letter should speak specifically to the following:

(Cont.on p.6 "rules for applying")