

BC breaks ground for new entryway sign

By Kaelyn Martin
Staff Writer

BC has broken ground on the construction of a sign for the main entrance. According to BC President Rev. Dr. David Joyce, the sign will be completed by commencement.

"People are going to want their picture taken with the sign in their cap and gowns," Joyce said.

BC faculty member and sculptor Kyle Lusk is currently building the new sign. The sign will be made out of Corten-steel and stainless-steel and will be built up on stone.

"There will be LED lights behind it's so at night the letters will be illuminated from behind and it's going to be on a stone pedestal," Joyce said

By constructing the sign, the school hopes that it will make the campus more inviting to others and better represent the College and its plans.

"I think it modernizes and it's more reflective in the kind of college we are. It will sit so you can see it well at night," Joyce said.

The entryway will be moved left of the main entrance and off the center median. "The new sign will also perpendicular to the road instead of parallel so you can see it coming from both ways," Joyce said

"It's a lot safer," Joyce said. Now people entering or exiting the College can see the road better and the cars on the road.

Along with the addition of this new sign Joyce plans to have three new signs styled similarly but are slightly smaller at each additional entrance way. There will also be a new entrance added by the gym.

"It's been years in the making planning and fund raising and we want to make sure it look good and it's done well," Joyce said

"One of the neat thing of being the College president [is] we have a lot of cool things happening this year one being the new coffee shop and also the new dorm." Joyce said. "The sign is a step all part of where Brevard college is going."

Rocking to the top

Climbing team takes second at regionals

By Jessica Wiegandt
Staff Writer

The Brevard College climbing team took second place at the regional competition held in Chattanooga, Tennessee. Eight team members competed in the event, held on April 2, 2016.

"The routes were hard, like, really hard but it was fun to work on the problems," freshman Gabe Braganza said. "I've definitely improved this season and it was great to finish it out at Regionals."

President and sophomore Audrey Ashburner expressed excitement about this year's team and her hopes for the future. "The improvement of new and returning members was amazing," Ashburner said. "[Members] went from recreational to intermediate categories within no time."

Brevard placed closely behind Middle Tennessee University, which, according to Ashburner, has some of the best intermediate and advanced climbers in the U.S. Appalachian Climbing region. From the BC team, Audrey Ashburner placed 4th and Jody Bettencourt placed 5th in overall women's. Eli Hyatt placed 4th and John Pate placed 8th in overall men's.

"Being a part of the team means the absolute world to me. It fills my heart with joy knowing I was able to join together a group of 18 students and create something that most thought would be impossible, since we were no longer being funded," Ashburner said.

Throughout the season, Ashburner persuaded team members to help her gather funds and she sought out external donors for the team's competition costs. The fundraiser held earlier this semester in conjunction with Coffee Carts Studios was highly successful and allowed the team to continue to compete for the remainder of the season.

"Being president of the climbing team was the hardest thing I've ever had to do in my life but the opportunities and connections that I created throughout the process made every stressful moment worth it all," Ashburner said.

Students on the team enjoyed the time spent climbing and the opportunities it opened as

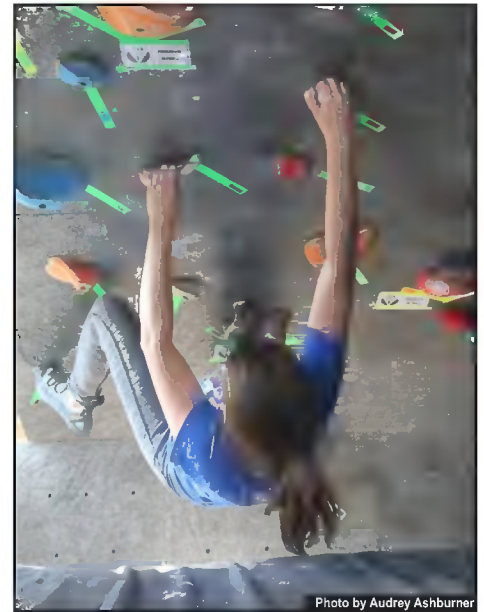


Photo by Audrey Ashburner

Jody Bettencourt climbs on the incline wall at Regionals.

well. Freshman Kris Odom came to BC as a pre-established climber but was excited when he heard of the team. "Climbing in season made me work harder to be the best I could be." Odom said, "I liked climbing with the team because they pushed me."

Ashburner was surprised with the commitment and effort all team members had put in over the course of the season. She said this season the team had a record-breaking number of team members and BC has the largest team in the region even though it is the smallest school that competes.

"Joining the climbing team my freshman year was the best thing to happen to me, it brought meaning to my life. I had never had something that I could be passionate about, and I will hold on to these memories for the rest of my life." Ashburner said, "Brevard would not be the same for me without this team. Looking back on the season, all I can do is smile."

The team members who competed qualify to attend nationals, held in California, but team funds are limited.