

# Is spring on its way?

## *Snow is still falling in some states*

By Jeni Welch  
Copy Editor

Spring was welcomed to the area on March 20, but you wouldn't be able to tell after this past weekend. Old Man Winter seems to be holding on with low temperatures and snow across other parts of the states.

Spring should be back in Brevard within the next couple of days and according to the Weather Network, Western North Carolina is expected to have temperatures above average once summer starts on June 21.

The forecast for the end of this week and the weekend shows temperatures in the 60s and 70s with periods of rain on Saturday. Living in a temperate rainforest calls for anywhere between 200 and 350 cm of precipitation a year, there is almost always a chance of rain.

However, the Farmer's Almanac says that the rainfall will be less than normal in the spring and the summer will have more than average rainfall in the hottest months of July and August.

According to the U.S. climate data website, Brevard has an average high temperature of 69 degrees in April and an average low temperature of 40 degrees. So, while the weather may not be ideal it is only a little below the normal temperature range for the area this month.

While the cool temperatures linger in the area, snow is still falling in states bordering with Canada expanding from Montana to Maine and reaching down to parts of Washington, D.C. and Virginia with a light dusting.

Interestingly, Washington, D.C. had not received any snow until April 7, this past Saturday.

The snow storm stretching from Montana to Iowa left 1 to 3 inches on Sunday and has postponed sport games and hindered flights. This storm has lessened but did not bring an end to winter in the area, another snow storm could be on the way starting tomorrow.

# Bensel could be next English professor

By Jordon Morgan  
Editor in Chief

In the search to find a suitable candidate to replace Dr. Ken Chamlee as he heads toward retirement, one of the three finalists, Dr. Alyse Bensel, gave a group of students as well as several of the Humanities Division's faculty members a demonstration of what she can offer if she is given the position, and it definitely fit the profile of experiential education.

Bensel completed her undergraduate work in English and Environmental literature, obtained her Masters of Fine Arts degree at Penn State, and defended her Ph.D thesis at the University of Kansas. So it's safe to say that Dr. Bensel is more than qualified when it comes to her credentials, but how is she when teaching a class?

Fortunately, she has all the makings of a potentially great professor here at Brevard College. Starting the pseudo-class off with a reading of a poem from "The Lost Letters of Frederick Douglass," Dr. Bensel discussed the concept of persona.

That being, the idea of a writer taking on the personality of someone else, someone who could be either fictional or historical. In this case, it was the author of the poem, Evie Shockley, taking on the persona of Frederick Douglass, in a last letter supposedly sent to his daughter.

Following that, Dr. Bensel asked the room to name any important figures they could think of, again both fictional and historical, and list them on the board. Subsequently, the room then was asked to write either a poem or a "flash-fiction" kind of story from the perspective of one of those people or groups listed.

Even if you had absolutely no experience in poetry or creative fiction writing (like myself), it was interesting and lends itself well to the concept of experiential education. There are still two candidates to be interviewed by the English Department, with the final decision coming in the next few weeks.

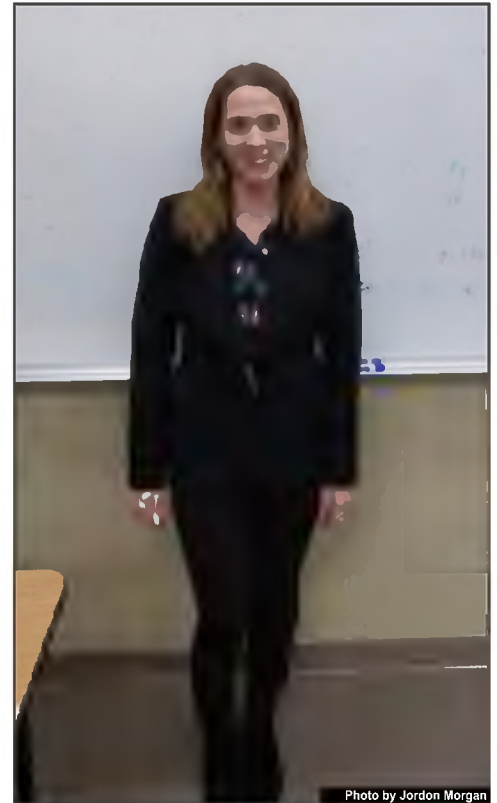


Photo by Jordon Morgan

Dr. Bensel after the conclusion of her class.

## THE CLARION

### SENIOR STAFF

- Editor in Chief . . . . Jordon Morgan
- Managing Editor . . . . Calum McAndrew
- Copy Editor . . . . . Jeni Welch
- Campus News . . . . . Zach Dickerson
- Opinion . . . . . Florian Peyssonneaux
- Arts & Life . . . . . Lauren M. Fowler
- Sports . . . . . Calum McAndrew
- Layout & Design . . . . Jeni Welch
- Faculty Advisor . . . . John B. Padgett

### OTHER STAFF

- Carmen Boone
- Kelly Kearnan
- Mary Lewe
- Emily Massing
- Matheus Masukawa
- Ivy Pope
- Daniel Ramos
- Madison Ramsey
- Morgan Shepard

The Clarion is a student-run college newspaper produced by student journalists enrolled at Brevard College. Unsigned editorials represent the collective opinion of the staff of *The Clarion*. Other opinions expressed in this newspaper are those of respective authors and do not necessarily reflect the opinions of the faculty, staff or administration of Brevard College.

**All correspondence should be mailed to:**  
*The Clarion*, Brevard College, One Brevard College Drive, Brevard, NC 28712, or send E-mail to [clarion@brevard.edu](mailto:clarion@brevard.edu)  
[clarion.brevard.edu](http://clarion.brevard.edu)

✉ **Letters Policy:** The Clarion welcomes letters to the editor. We reserve the right to edit letters for length or content. We do not publish anonymous letters or those whose authorship cannot be verified.