

# Severe Weather Hurricane Florence

By Matt Lynch  
Staff Writer

Hurricane Florence regained its strength and was declared a Category 4 hurricane on Tuesday, September 11. Weather officials say that the major storm is headed for the southeastern states of South Carolina, North Carolina and Virginia. The storm is expected to make landfall on Friday, September 14, however the winds will begin to pick up on Thursday.

On Sunday, September 9, officials said Florence was recorded 720 miles southeast of Bermuda with winds up to 85 mph. But by Tuesday evening the storm was 725 miles east-southeast of Cape Fear, North Carolina and had wind speeds of up to 140 mph.

Hurricane Florence has already had an effect on the beaches of the Southeast with dangerous swells and powerful rip currents. Officials have warned swimmers to stay out of the waters.

Myrtle Beach hardware stores and local supermarkets were filled with residents stocking

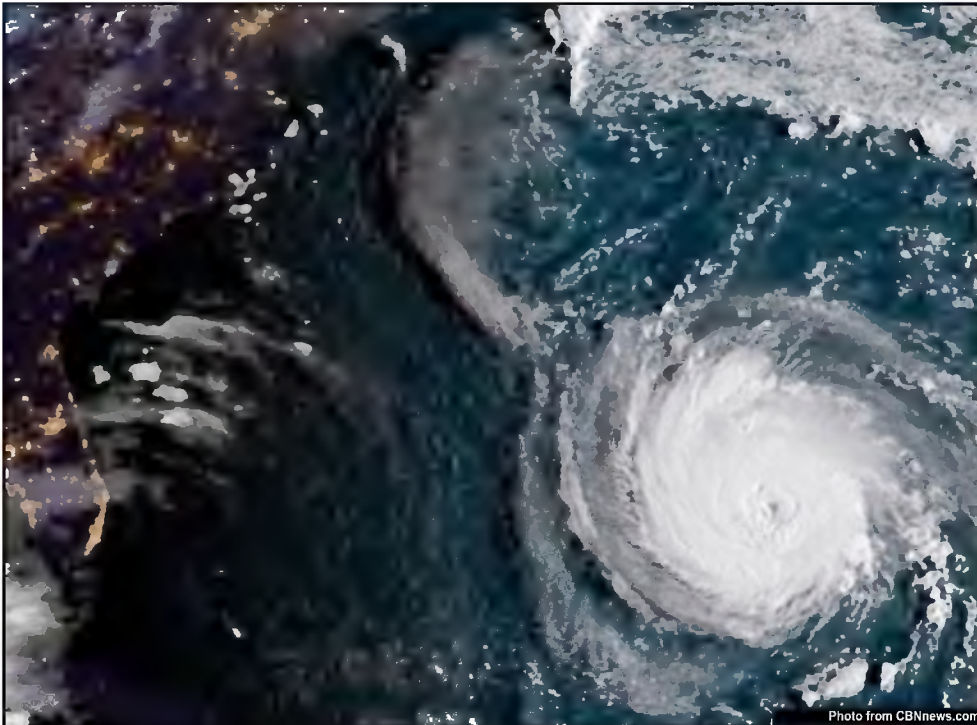
up with water, food and supplies. Florence is the first hurricane in the 2018 hurricane season and is expected to be a huge one.

Hartsville, South Carolina resident Debbie Lynch said "Being only an hour and a half from the coast can sometimes be a great thing but can also be a terrible thing in such moments like this." Not only will the Coastal areas be affected, but the inland areas will still get hit with a huge amount of rain and severe winds.

"Prayers go out to all the residents that will be affected to the storm," Lynch said.

Hurricane season is from August to October, with September being the prime-time month for occurrences. Hurricane Irma struck Florida just last year on September 10, 2017 and caused extensive damage.

The governors of North and South Carolina and Virginia have declared states of emergency along the coastal areas.



Aerial image of Hurricane Florence as seen on Tuesday morning as it heads towards South Carolina, North Carolina and Virginia. Some states have announced mandatory evacuations along the coastlines as the areas prepare for the damaging winds and potential floods.

## Brevard College secures housing for families fleeing Florence

By Mary Lewe  
Copy Editor

On Tuesday, Sept. 11 at around 4 p.m., Dean of Students Debbie D'Anna sent out a campus-wide email stating that Friday's Senior Pinning Ceremony would continue as scheduled despite predictions of severe weather due to Hurricane Florence, and that the school had secured housing for families of students affected by the storm at the Brevard Music Center.

Florence is expected to make landfall on Friday, bringing dangerous weather conditions to the eastern part of the state, with the possibility of being the strongest hurricane to hit the Carolinas in history.

Already the Outer Banks has begun to see flooding. With high winds, up to 13 inches of rain and what is like to be a deadly storm surge still to come, it is likely that many students are worried about their families living further east.

Although mandatory evacuations have been declared for areas in North Carolina, South Carolina and Virginia, but still many people are opting to stay and weather the storm.

According to CNN, hardware stores are already limiting customers on the amount of plywood that can be purchased per household, and many fear that once they leave it will be tough to return or check up on damage caused to their homes.

The hurricane will likely bring heavy rains to Western North Carolina with the potential for flooding due to a wet summer. According to the Citizen Times, WNC could see between 1 and 8 inches of rain over the next week, and 4 inches or more would be enough to cause flooding.

"We have a really good relationship with the Brevard Music Center," D'Anna said in a phone call on Tuesday evening.

All it took was a phone call from D'Anna to set up the emergency housing, and the BMC "was more than willing to help us," D'Anna said.

D'Anna wants to encourage students "not to hesitate if their family has a need."