

LITERARY  
PAGES  
See page 4

# Columbus

SPORTS  
NEWS  
See page 3

Volume XIX

LOUISBURG COLLEGE, N. C., MONDAY, OCTOBER 24, 1960

No. 1

## Nine Members Added to Staff For '60-61 Session

Keeping in step with the expansion program Louisburg College moved ahead this past summer by adding nine new members to its staff, these being seven faculty members, a nurse, and a house counselor for the girls' dorm.

The faculty members include the following:

Mr. Norman Chadwick, of Smyra, N. C., will instruct in the Biology Department. Holding the B.S. and M.A. degrees from Appalachian State Teachers College, Mr. Chadwick has also done additional work at East Carolina, and last summer attended the National Science Institute at Appalachian State. He has taught in the public schools in several North Carolina counties, and for the past seven years has been teaching Biology in Carteret County.

Dr. Sarah Davis, a native of Louisburg, holds an A.A. from Louisburg, an A.B. and M.A. from U.N.C. and a Ph.D. from New York University. She taught English in the Elizabeth Irwin High School in New York and at New York University. Since 1952, she has been in the publishing field, having served with Henry Holt & Co. and McGraw-Hill Publishing Co. For the past 18 months she served as Technical Editor of an encyclopedia of world art in Europe.

Mr. Avery Dennis, also a native of Louisburg, holds his A.A. from Louisburg and a B.S. degree from N. C. State College with a major in Chemistry. Mr. Dennis, who has served as a graduate assistant at State, teaches chemistry and Mathematics.

Meade Nehrig, hailing from Patton, Pennsylvania, has an A.B. from Duke and an M.A. degree from the University of Pennsylvania. He has also had an additional year of graduate study at the Boston School of Theology in the area of counseling. He taught for two years in the Gastonia, N. C., Public Schools, and for the past three years has been on the faculty of Girard College, Philadelphia, Pennsylvania. He teaches American History and is Assistant Dean of Men.

Mrs. Betsy Leonard Pernell, also of Louisburg, is the third member

(Continued on page three)

## Republican-Democrat Day Is Scheduled For Oct. 27

On October 27 the Y.M.-Y.W.C.A. will sponsor Republican-Democrat Day. On this day the students of Louisburg College will have an opportunity to express their opinions on the party of their choice. This entire day will be devoted to campaigning, celebrating, voting, etc.

Beginning with the morning meal, the festivities will start in the cafeteria. The tables will be arranged with flags representing each party. Republicans will sit at their designated tables and Democrats at theirs. This will take place at each of the meals that day.

For an added touch of humor



The Rev. Ruark, Religious Emphasis' Week speaker, addresses the student body in an evening service.

## The Rev. H. G. Ruark Is Guest Speaker For Religious Week

The theme for Religious Emphasis Week which was September 27-30 carried the title "A Christian Grammar." The Reverend H. G. Ruark from Laurinburg, N. C., was the guest preacher for this occasion.

Reverend Ruark was born in Wilmington, N. C., and took his A.B. Degree at Duke University. He received his B.D. at Yale and then started his ministry. He has been pastor of the First Methodist Church in Laurinburg for the past seven years.

The Rev. Mr. Ruark is no newcomer to the Louisburg campus. He has been a member of the Board of Trustees for about four years and has spoken at assemblies held here in the summer. Rev. Ruark also writes an editorial every Sunday for the *Greensboro Daily News*.

He is the proud father of three children: two boys and a girl. His oldest son is a sophomore at UNC studying pre-law. His daughter is 16 and his other son is 13.

Mr. Ruark spoke for four nights from 6:30 to 7:15 in Main Assembly Hall. On Tuesday night, September 27, the topic was "Noun

RELIGIOUS EMPHASIS SPEAKER

## Education 101 Added To Orientation

Education 101 is now being required of all freshmen to aid in social and academic adjustment to college. The class is held each Friday morning for an hour to be spread out over a period of seven weeks. Credit for one semester hour is given for the course, and it is transferable to some colleges.

Each week offers a new phase of adjustment, and the class is taught by various members of the faculty and visiting speakers. The schedule of talks already completed and those to come is as follows:

September 16 — "Adjusting to College" — Dr. Cecil W. Robbins  
September 23 — "Acquiring Basic Study Skills" — Mr. John York  
October 7 — "Acquiring Basic

(Continued on page three)

and Adjective;" Wednesday the 28, "The Verb To Be;" Thursday the 29, "The Active Voice;" and Friday the 30, "Present Perfect."

He also spoke on Wednesday and Friday mornings at 10 a.m. for chapel and orientation services. He was also available for private and group consultation in the Faculty Parlor on those two mornings.

Harry Lange.

## Churches In Louisburg

Louisburg offers churches of three denominations to the student body of Louisburg College. They are Baptist, Episcopalian, and Methodist. Services are held at 11:00 a.m. each Sunday morning at all of these churches.

Louisburg Baptist Church is located at 302 Main Street, on the corner of Main Street and Sunset Avenue. Reverend Aubrey S. Tomlinson is the pastor of the Baptist Church.

Louisburg's Episcopal Church, under the guidance of Reverend W. M. Latta, is located on the corner of Sunset Avenue and Church Street. College students may actively participate in the Canterbury Club which is connected with the Episcopal faith.

The Methodist Church, with Reverend Herman Winberry officiating, is located on the corner of Main Street and East Noble Street.

## Campus Face-Lifting Goes On In Summer

By HARRY LANGE

While students were enjoying their summer months of sun and fun, there was a considerable amount of activity on the Louisburg College campus. This activity progressed to such an extent that returning students were amazed when they confronted the "new campus."

The gravel and clay are now absent from the area around the cafeteria. Now students may sit around tables situated on the brick patio and indulge in a conversation or a card game. This new patio will eliminate the problem of mud and puddles of water when the rain and snow descend.

Brick walkways have also been laid in the cafeteria area. Although these are detrimental to the parking facilities, which here-to-fore were present in this area, the neatness of appearance and the convenience of a dry, puddleless area upon which to walk enhance the overall picture of the campus.

The areas which are now covered by hay will soon be alive with grass. When the grass has grown and the hay has been removed, the picture presented will be that of a small garden plot with walkways threading their way among the freshness of nature.

The library entrance which used to be in Main across from the Post Office has been closed and walled-off. Now students enter from the rear of Main Building and encounter the reference room. This improvement has temporarily deprived the men students of their television room, but this 'catastrophe' will soon be rectified. A student may now pursue his or her studies diligently in the library without the inevitable opening and closing of the door by the Post Office which was accompanied by loud voices, shrieks of laughter, and milling of feet on the cement floor — all of which were insurmountable distractions to efficient study.

There seems to be a new jukebox in the soda shop. It appears to be extremely popular as it can be heard blasting away its tunes from breakfast until late into the night.

These are the improvements which have transpired throughout

(Continued on page four)

## Concert Series Opens Season With 'Carmen'

The 1960-61 Louisburg College Concert series will begin on October 24 with the National Opera Company's production of "Carmen."

The National Opera Company is the former Grass Roots Opera Company, which was organized in 1948 in Raleigh. For the past 12 years the company has been touring North Carolina and surrounding states. Their audiences consist mainly of high school and college students, for their programs are presented most of the time as part of college concert series or of town concert associations.

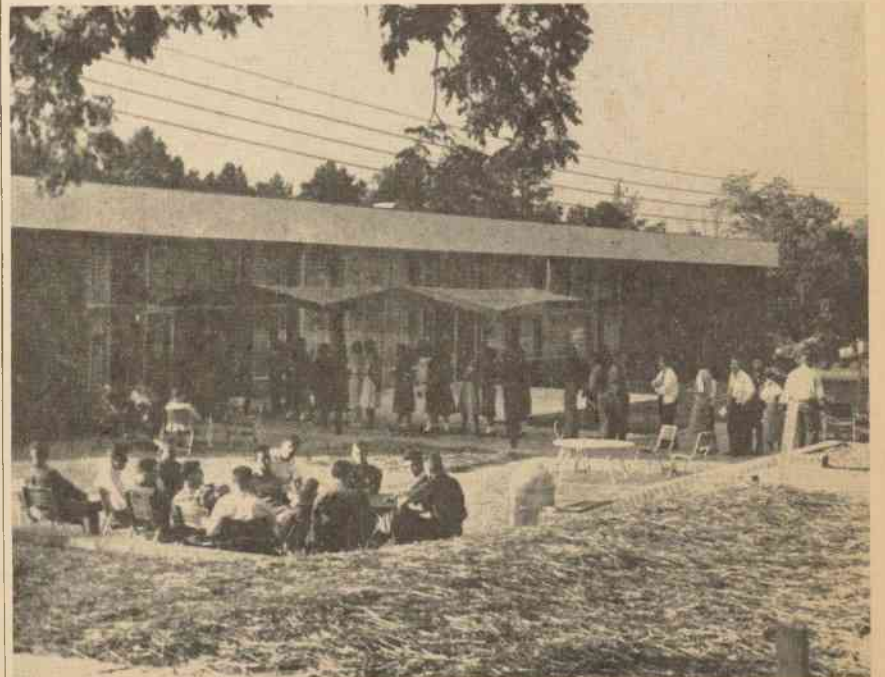
The members of the company are young singers with varying levels of experience, from all parts of the country. They all have college degrees in music, or the equivalent, and some have had considerable experience in opera, concert, and television. Many past members have attained recognition through experience gained with this company and have gone on to higher realms of achievement.

"Carmen," like all the productions of the company will be sung in English. The opera focuses its attention on gypsies who live around Seville, Spain, in 1820. The most famous of them all is Carmen, a bold and heartless young gypsy girl who works in the local cigarette factory. She is in alliance with a band of smugglers in the nearby mountains, led by Le Remendado and Le Dancaire. Don Jose, a hot-blooded young corporal stationed with a regiment of dragoons in Seville, has been in love with Micaela, a peasant girl from the countryside, his childhood sweetheart; however, he becomes infatuated with Carmen and deserts his regiment after a fight with the captain of his company. He and Carmen, with her companions, Frasquito and Mercedes, join the gang of smugglers in the mountains. But already Carmen's attentions are shifting to a dashing toreador, Escamillo, and the ensuing complications can only lead to tragedy.

Color, humor, jealousy, and

(Continued on page four)

FACELIFTING



New improvements can be seen in the picture above in which some students lounge on the new terrace and others line up for dinner.