



Noted Anthropologist Visits Campus



Sophomore Class Election

An annual facet of college life is electing class officers. On Thursday morning, September 5th, the Sophomore Class met in the AC auditorium to elect

Scholarship

Reverend J. L. Smith, who served as pastor in the North Carolina Conference of the United Methodist Church for 38 years, has recently established a scholarship at Louisburg College in memory of his wife and son.

To be known as the Augusta Robinson and Fred A. Smith Memorial Scholarship, the income from this fund will be used to provide a scholarship for a deserving student who plans to enter full-time Christian service. The amount of the fund is \$4,000.

"I want to leave something to help young people throughout the years ahead," Mr. Smith commented. He is a resident of the Methodist Retirement Home in Durham.

Mrs. Smith passed away several years ago and Fred, former Superintendent of Schools in Wake County, lost his life in an automobile accident several months ago.

(The Franklin Times)

Daily Thought

Do all the good you can
By all the means you can
In all the ways you can
In all the places you can
At all the times you can
To all the people you can
As long as ever you can.

--Apples of Gold

its officers for the 1968-69 school year. The nominees were as follows:

President: Pete Rackley, Jay Fleck

Vice President: Peggy Copeland, Barbara Brown, Carol Myrick, John Moncrief

Secretary: Judy Campbell, Vicki Wolfe, Betty Carroll Bell, Marcie Wilhoit

Treasurer: John Quilter, Evie Smith, Steve Perry

The Election results were:

President: Jay Fleck
Vice President: Peggy Copeland

Secretary: Betty Carroll Bell
Treasurer: John Quilter

All students were required to hold a 2.0 average before being given the privilege to run for an office.

Homecoming November 23rd

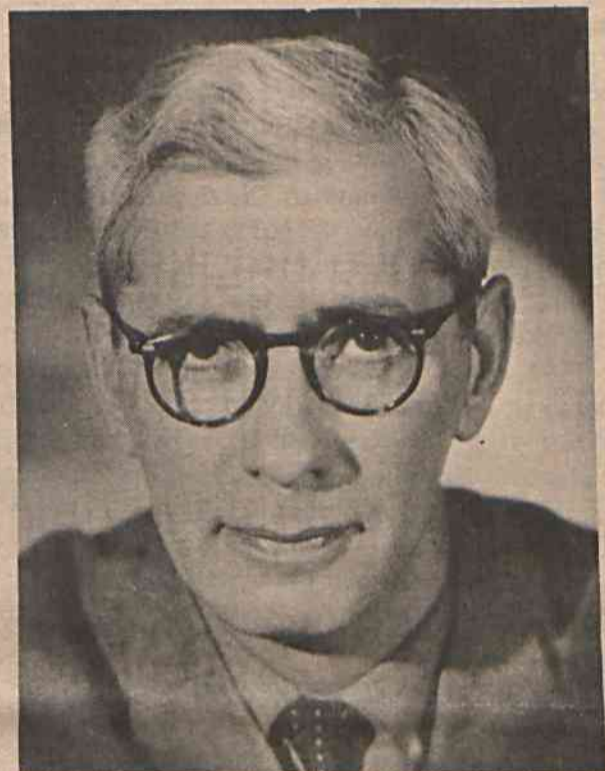
Plans are now being made for the big day - such as, trying to find girls representative of beauty, poise, charm and brains enough to at least have 1.5 average after mid-semester grades. We want the homecoming queen of 1968-69 to be the "choicest of the crop" of lovely girls we see on campus this year.

Candidates may be sponsored by any club or organization on campus. Please make your choice as soon as possible following the release of mid-semester grades and submit the name along with the sponsor to Mrs. Clara Frazier, office-Franklin 100.

Dr. Ashley Montagu, noted anthropologist, and author of more than 20 volumes, was presented September 24-25 at Louisburg College by way of the recently obtained \$1,800 grant from the S & H Foundation. In 1960 the S & H Foundation Lectureship Program was established as part of the Sperry and Hutchinson Company's Program of aid to education.

Former Professor and Chairman of the Department of Anthropology at Rutgers University, and Professor of Anatomy at New York University and Hahnemann Medical College, Dr. Montagu is a graduate of the University of London with a Ph.D. from Columbia in 1937.

He is one of the most versatile scientists in America, and has an international reputation as an anthropologist whose principle interest is bridging the gap between biological and social disciplines. His much discussed study, "The Natural Superiority of Women," climbed immediately to the best



DR. ASHLEY MONTAGU

seller list. His lectures, "The Nature of Human Relations" (Sept. 24) and "The Dilemma of Modern Man" (Sept. 25), showed his brilliant speaking ability with discussions that were dynamic, provocative and lucid.

A very highly competent writer, he is the author of such scientific works as "Man's Most Dangerous Myth," "The Fallacy of Race," and "On Being Human." The college was proud to welcome Dr. Montagu to our campus.

Welcome To Louisburg College

May I extend a warm welcome to all students enrolled at Louisburg College for the 1968-69 academic year.

Many of you are here for the first time. College is opening to you a new world. At times you will rebel against entering into this new world. Often you will wish you had not come to college. Let me assure you that the experiences of bewilderment and frustration through which you may be passing are experiences that those of us who were freshmen in college once have also known. Be assured that you are among friends. All of us in administrative, staff, and teaching posts are ready to help you with your problems and to share with you in your success. Let me urge you to become acquainted as soon as possible with those who teach you and with your fellow students. If you accept and adjust to this new academic-social world, within a few weeks you will experience excitement and an increasing sense of fulfillment. Get caught up in the academic, the cultural, the social, and the spiritual life at Louisburg Col-

lege, and the days ahead will be the best ever.

For those of you who are returning to Louisburg College, let me also welcome you. You have passed through the turbulent first year, now you are ready for further adventure and deeper experiences. We invite you to commit yourselves to scholarship, to sound learning, and to creative purposeful

living. Build upon the failures and the successes of yesterday and join the ranks of those who are pursuing excellence in every aspect of life.

May this year at Louisburg College be the best yet for all of us who are a part of this great and growing family.

C. W. Robbins
President

