

FROM THE CHURCHES

The living endowment of the college continues to improve with each month. The churches are calling for an increased interest in the cause of Christian education in this section of the state. From the Green River Association on the west through the Gaston Association on the east of the college, our people are wanting to know about the college. And when they have heard and have seen, they want to have a part in the work. Indeed they are making an investment for the years.

One of our most important industrialists and a successful statesman was heard to say a few days ago, "Others may put their money in stocks, bonds, fine horses, cattle, estates, or whatever they like, but for me I had rather invest my money in the lives of boys and girls." That is the investment that will last through eternity! Our people are seeing this and the churches are making such investments in their future.

The report as given below is for the month of April. The amount is greater than last April, but it is not as it ought to be, for we have more than one hundred seventy-five churches in the bounds of these four associations. Approximately one-seventh of the number are in the list this month.

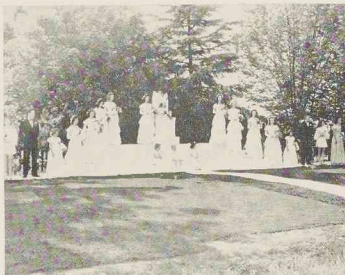
Kings Mountain Association	
Beaver Dam	\$ 12.50
Boiling Springs	\$250.00
Carpenter's Grove	\$ 3.30
David	\$ 3.00
Double Shoals	\$ 15.00
Double Springs	\$ 56.25
Elizabeth	\$ 12.33
Fallston	\$ 20.00
Kings Mountain, 1st	\$ 29.44
Lattimore	\$ 25.00
Oak View	\$ 22.00
Polkville	\$ 1.00
Ross Grove	\$ 22.78
Sandy Plains	\$ 16.25
Shelby, East Side	\$ 43.33
Shelby, First	\$150.00
Shelby, Second	\$ 36.76

Total—17 Churches \$727.74

Sandy Run Association	
Bethel	\$ 69.74
Big Spring	\$ 10.42
Caroleen	\$ 8.33
Cliffside	\$150.00
Forest City, First	\$254.46
Mt. Pleasant (C)	\$ 6.25
Sandy Run	\$ 10.00
Spencer	\$ 40.00
Temple	\$ 32.00
Trinity	\$ 27.14

Total—10 Churches \$608.54

Twenty-seven churches from two associations contributed \$1,336.28 to the current support of a Christian college. The faculty, the board



Queen Of May Is Crowned In Gala Event

On Saturday afternoon, May the fifth, at five o'clock, Miss Margaret Roberts was crowned Queen of the May. The beautiful magnolia and spruce trees on front campus formed a lovely setting for the occasion.

The exquisite picture that Margaret and the ladies of the court made as they marched from the church, through the archway and down across the lawn is one that we shall never forget.

Margaret was beautifully gowned in white nylon and she carried an arm bouquet of white calla lilies. Dorothy Dameron, maid of honor, was gowned in white lace and nylon. Her gown was fashioned with a V-neckline with no sleeves. The skirt was made of three scalloped tiers. She carried an arm bouquet of yellow snapdragons, sweet peas, and gladioli.

The ladies of the court included Doris Coates, Ruby Connor, Louise Edwards, Velna Ivester, Jeanne Rollins, Patricia Sumner, Margaret Wacaster, and Marjorie White. They wore gowns of white dotted nylon made identical to that of the maid-of-honor. Each carried an arm bouquet of mixed snapdragons, sweet peas, and gladioli. Bonita Dameron and Ruth Lineberger, flower girls, and Louise Allen and Rachel Elliott, train bearers, wore gowns of white dotted nylon also.

Little Harold James, son of Rev. and Mrs. Lee James, was crown bearer. J. T. Jones, Jr., and Sam Greene, Jr., were ushers and Delores Jackson and Marigold Long

were heralds. Miss Bernice McMurry, president of the Student Government Association, crowned the queen and acted as narrator for the occasion. The program, "Welcome Sweet May Time", directed by Miss Dorothy Smith, was divided into four episodes. The first consisted of the Processional and Welcome to May. The second episode took us back to Primeval celebration of May. Miss Louise Martin was crowned Primeval Queen of May by a group of Merry Villagers. She was entertained by Court Jesters. A group of small girls from the Boiling Springs High School performed as flower dancers.

Modern tribute to May was given in the third episode. The tumblers gave a remarkable performance which showed ability and practice.

Throughout the program, the chorus sang appropriate songs. Miss Coleen Talbert was pianist.

There was the traditional Maypole dance which was followed by "A Spring Fancy" sung by Miss Betsy Fuller. As the shadows lengthened, the court marched out to the strains of "Largo."

VESPERS

When the sun is sinking in the west and a busy day is near the end the echoes of the familiar phrase: "Let's go to Vespers" are heard on the campus.

Vespers is held each afternoon at six o'clock. This period during which students and members of the faculty meditate and worship together, has brought to them a greater realization of the Divine Power which rules the universe. Vespers has often

President Elliott Tours Southern Jr. Colleges

(Continued from Page One)

son, Mississippi, President Elliott joined the commissioner of Junior College Education in Mississippi and completed his tour with him. They visited six of the twelve junior colleges in Mississippi, one of which was Whitworth Junior College, a private school for girls in South Mississippi. During his trip Mr. Elliott went within twenty-five miles of the Gulf coast.

"The majority of these schools are doing work like what we are doing here", Mr. Elliott said. "The school is the center of community life. Most of them operate on the basis that a person can go through the institution without any money. Practically all have a work plan. Not two of the schools are alike, yet each serves its own community."

Most of the schools are state supported and carry on a program of study of liberal arts and vocational work.

"I consider this the most highly developed system of junior colleges in the eastern half of the United States. A great deal of what I observed will be useful to us here at Gardner-Webb", Mr. Elliott said.

Some of the larger colleges which Mr. Elliott visited, but did not investigate were University of Alabama, Tuskegee Institute, Georgia Tech, and Clemson College.

ODDS and ENDS

The campus is dotted by small groups of students, half tearful and half cheerful—They're writing in each other's annuals, which makes them even more valuable to the owner.

Miss Joyce Tate and Miss Merle Butler were visitors from Boone on our campus a few days ago.

"Welcome Home, Gene!" Truly we welcome Gene Hoyle back to our campus, while he is home on furlough from the Navy. It's nice to see him and we wish for him, "Smooth sailing!"

been the source through much trials and burdens of a weary day have been lifted.

Due to the faithful work of Mrs. Dorothy Franklin, our devotional leader, and the co-operation of faculty and students, Vespers has had its part in bringing about the fine Christian atmosphere which reigns on the campus of Gardner-Webb.