

# Gardner-Webb University

# The Pilot



Wednesday December 9, 1998

The Official Campus Newspaper

Volume 2 No. 4

White and staff look at purchasing Nicaraguan university

## GWU considers international campus

**White sees numerous opportunities for GWU in Latin America**

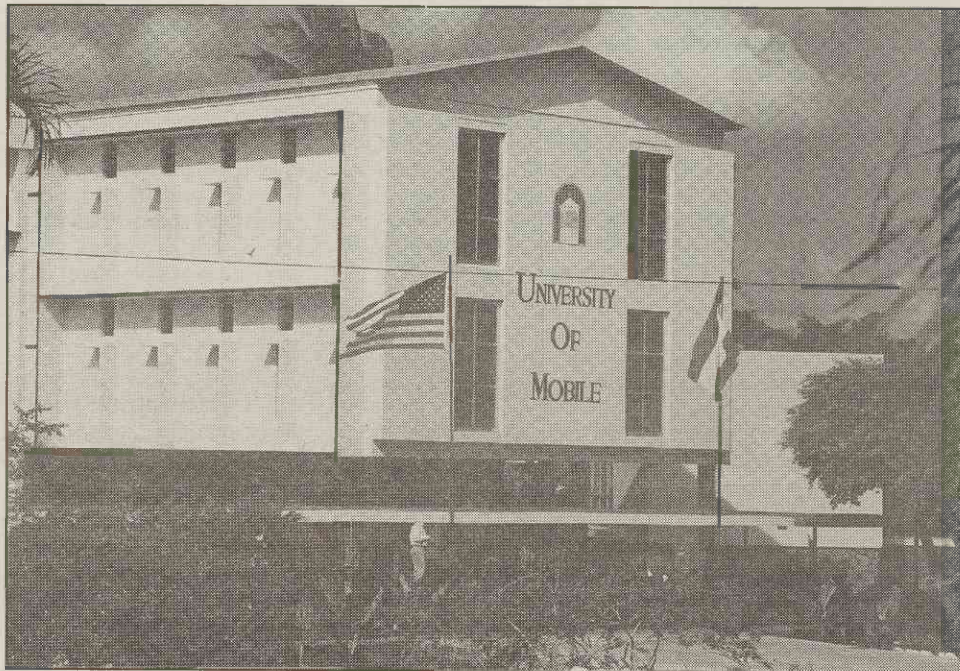
Mary Jones  
Pilot staff

No decision has been made yet, but Gardner-Webb is considering buying a campus in Nicaragua.

The new school would be part of Gardner-Webb and would be open to Gardner-Webb students. Just why would Gardner-Webb want to do this and what are its goals in this new endeavor?

After finishing a telephone conversation about negotiations for the Nicaragua school, President White sat down and responded to these questions in an interview on Nov. 23.

The University of Mobile started its school in Nicaragua in 1993. The campus, among lush vegetation and tropical plants, is located in San Marcos, south of the capital,



The main entrance of the current University of Mobile campus in San Juan, Nicaragua. Gardner-Webb is interested in possibly obtaining the university. The campus would offer numerous opportunities for Gardner-Webb students and faculty.

Managua. It is a well-functioning school with about 450 students from about 17 different countries. It has a campus with dorms, dining facilities and its own catalogue. Standard American courses are taught,

all in English. The school uses the curriculum of the University of Mobile.

White explained that the University of Mobile has decided to end its involvement with the school, but wants the school

to continue. The University of Mobile, like Gardner-Webb, is associated with the Baptist church, and is interested in Gardner-Webb because it has similar values, programs and

**SEE GWU page 4**

**Nicaragua campus would offer students both ministry and learning experiences**

Carla Catoe  
Pilot staff

Ask not what you can do for GWU, but what GWU can do for you. If plans go through to purchase a college in Nicaragua from the University of Mobile, students will be able to attend college there and receive credit at GWU.

"I was told students could go there and pay the same tuition as if they were here but with the difference in cost of room and board, they could fly there and back for the same amount they pay to go here for a semester," Dr. Ron Williams of the Religion department said.

"So, they would not have to pay any more to go to school in Nicaragua, including airfare and everything, than they pay to come here. Plus, any courses taken there will transfer here."

Students would not have to  
**SEE Students page 5**

## GWU featured on television show

Brooke Buchanan  
Pilot staff

The Gardner-Webb MBA program will be highlighted on a national cable program in December.

The Executive Forum recently chose GWU as a top school offering executives the ability to further their education.

"Our MBA program is one of the top programs in the region," stated Dr. Anthony Negbenebor, director of the

MBA program.

When GWU was listed on the John Templeton Foundation Honor Roll for Character Building Institutions, the Executive Forum took note and began to look at the Business School and its offerings.

"They interviewed Dean James Crawley about our school and the MBA program. They wanted to know what makes it unique in comparison with other universities," stated Arlen Honts, Director of the Broyhill School of

Management. "As a result of that interview, they invited us to participate in a panel discussion."

The show featured four business schools; Gardner-Webb University, University of Minnesota, University of Wisconsin at Clearwater and New Mexico State University.

During the first week in November, Matt Webber, Director of Public Relations, Crawley and Honts flew to New York for the taping of the show. The show is hosted by

James Louvell who was commander of the Apollo 13 space mission. The show is watched primarily by business people and airs on Saturdays at 4:30 p.m. on Channel 12.

The MBA program is a 36-semester hour course of study for those students interested in business and managerial work. It is an evening program which focuses on three concentrations: Health Care Management, Human Resource Management and International Business Management.

## Cartee to hold benefit concert at Hamrick

Brittany Jarvis  
Pilot staff

Carl Cartee, the critically acclaimed contemporary Christian singer, is planning a benefit concert December 19 at 7:00pm in Hamrick Hall to support the Salvation Army. The admission charge of  
**SEE Cartee page 2**