

News

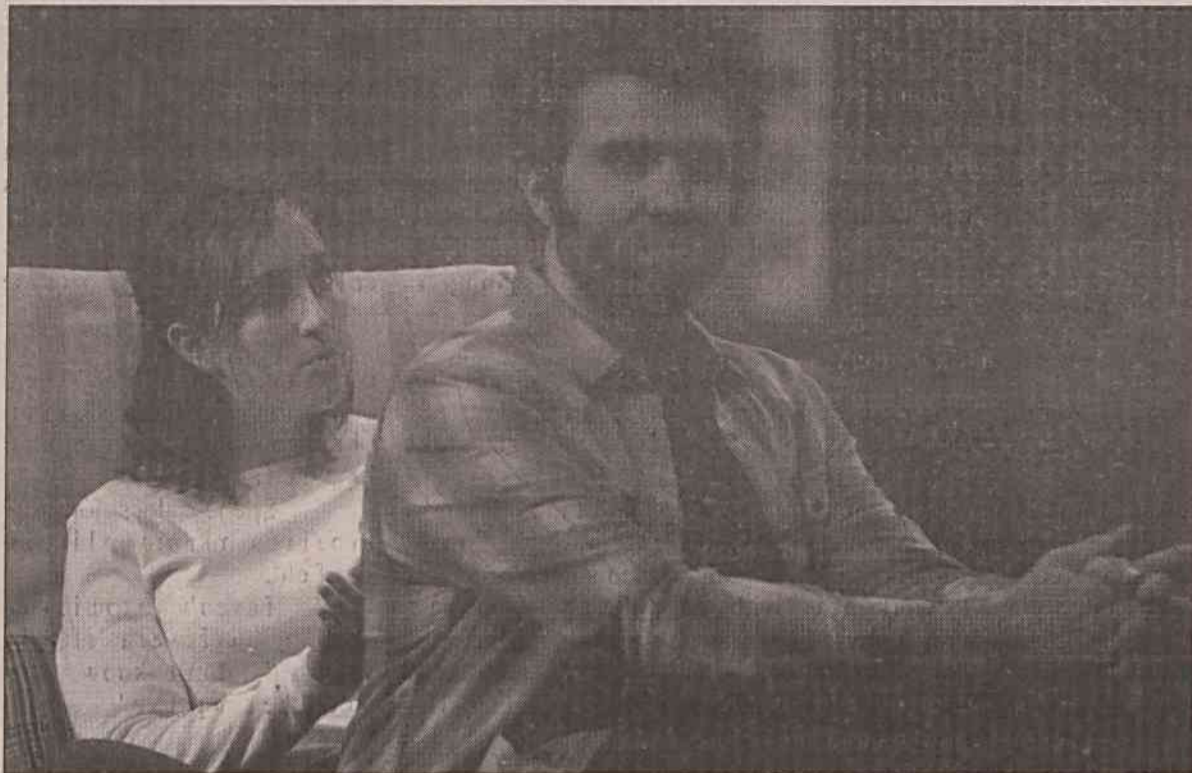
Misalliance binds theater gurus together

Photo by Scott Holstein

Noelle DeLozier (L) and George Hendricks rehearse their parts for *Misalliance* on Feb. 16.

Katie Main Pilot staff

The theater department plans to bring Edwardian society to an English patio constructed atop Dover Theater's stage Feb. 25-29 as they present *Misalliance*, George Bernard Shaw's lighthearted commentary on the British life.

"It's about the two-facedness of propriety," director of

theater Scot Lahaie told his actors. "It's all about keeping up appearances ... as long as you aren't caught, everything is fine."

Lahaie and Chris Keene, technical director, chose the play to compliment their curriculum and to diversify the year's repertoire of performances.

"We try to rotate things," Keene said. "We'll do an

ancient classic like a Greek play or Shakespeare, and then a modern classic. Shaw is a modern classic."

Cast and crew members have worked on the production since January, perfecting British accents and building sets every afternoon and evening.

Keene heads up the set crew. He made the decision to change the set of *Misalliance*

from its traditional indoor design to an outdoor, garden-facing patio instead. The set also includes an entryway to the interior of the house, the tail of an airplane and even a "Turkish bath."

"A Turkish bath is a preliminary version of a steam room or sauna," Keene said. "It's the newfangled invention that the family receives."

Freshman Noelle DeLozier, was surprised to win the lead role of Hypatia, a 28-year-old woman living with her family in England in 1909.

"She's really my opposite, which makes it fun 'cause it's such a stretch," DeLozier said.

Having performed roles in productions throughout high school in her home state of Maryland, the freshman decided to audition for *Misalliance* because "I love theater, and it was a comedy."

DeLozier enjoys the late-night practices largely because of the company she gets to keep.

"The people are really great to work with, and I'm learning a lot," she said. The least enjoyable part of the process, however, is "having no time in the evenings anymore."

Freshman Brad Archer, whose high school theater career attests to the fact that he loves the stage (Guys and

Dolls, Father of the Bride, Pirates of Penzeance, Into the Woods and more), plays Mr. Tarleton.

"He's the father figure in the play," Archer said. "He's really just a silly character that thinks he knows everything but in all actuality knows nothing."

Lahaie gave Archer the part after the original cast member dropped out.

"Brad stepped up to the role," Lahaie said. "It's exciting to see someone like Brad ... he has an energy about him - I think he works well under pressure."

Three actors, in fact, have quit since rehearsals began.

"The show must go on - that's what we're hanging on to, but there comes a point when you say, 'Will it?'" Lahaie said.

The set crew was deterred by the snow days as well, adding to the directors' frustrations.

"Right now, we are burning the midnight oil - we're scrambling to catch up," Lahaie said, "but we will overcome."

Misalliance's array of characters will perform at 7:30 the 25-28, and 2:30 on the 29. Admission is free for students with GWU I.D., \$6 for adults and \$4 for non-GWU students and seniors. For more information, call 704-406-4371.

News in Brief

Undergraduate students display artistic skills

Faculty and students involved with the Gardner-Webb art program have worked to have a display in the Cleveland County administration building, located in uptown Shelby on Marion Street.

The art display went up Jan. 17 and will be taken down at the end of March.

The artwork on display is from undergraduate student art classes, including painting class, Drawing I and Advanced Drawing. A few of the items may be brought down earlier so they can be entered in the Broad River Review contest.

To view the work of fellow students, a trip to the display would be best if taken as soon as possible, according to art professor Doug Knotts.

"We invite other students, when doing things in Shelby, to take a look at the Gardner-Webb art display in the Cleveland County administration building," said Knotts.

- Jared Smith



Gardner-Webb University Senior Nursing Students

The road to success starts
with Moses Cone Health System.

We offer New Graduates...

- ▶ Early employment options with NCLEX support.
- ▶ Intensive 5-week classroom and clinical experiences to complement your department orientation.
- ▶ Ongoing support and developmental activities for the first year.
- ▶ Residency programs (Pediatrics, OB/GYN, Med/Surg, Emergency Services, OR, Cardiac, Critical Care).
- ▶ A variety of clinical practice areas and settings to select from.

Ensure your success by honing your skills with experience and professional guidance. At Moses Cone Health System, we are committed to professional excellence and our transitional programs are designed with your success in mind.

For additional information on any of our nursing options, please call Nurse Recruitment at: (866) CONE-RNS; or contact us at: Moses Cone Health System, Nurse Recruitment, 1200 N. Elm Street, Greensboro, NC 27401; FAX: (336) 832-7074; Phone: (336) 832-7874; or apply online: www.mosescone.com EOE.



MOSES CONE HEALTH SYSTEM

▶ Develop Yourself
@www.mosescone.com