

# A Different View Around GWU



Photo by Rachel Lloyd

Clockwise from Above: A beautiful sunset lies over the town of Boiling Springs just a mile from the Gardner-Webb campus.

Upper Middle Right: Geese line up in a diagonal form as they swim on Lake Hollifield, on the Gardner-Webb campus.

Lower Middle Right: A yellow flower soaks up the sun in the Rose Garden. The rose garden is one of the many attractions at Gardner-Webb.

Bottom: The clock tower sits in the back of Lake Hollifield. Many students come to the lake to walk, read or relax.

Below: Candy machine glass reflect the outdoors of one of the dorms' lobbies.



Photo by Katie Bryant



Photo by Rachel Lloyd

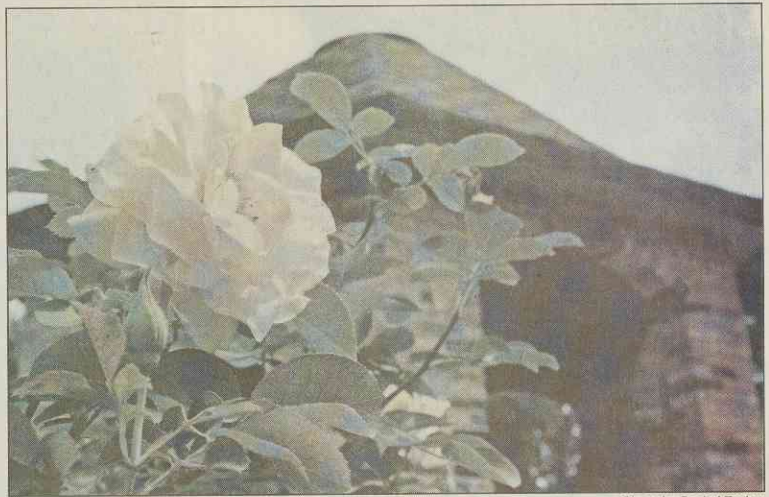


Photo by Rachel Tucker

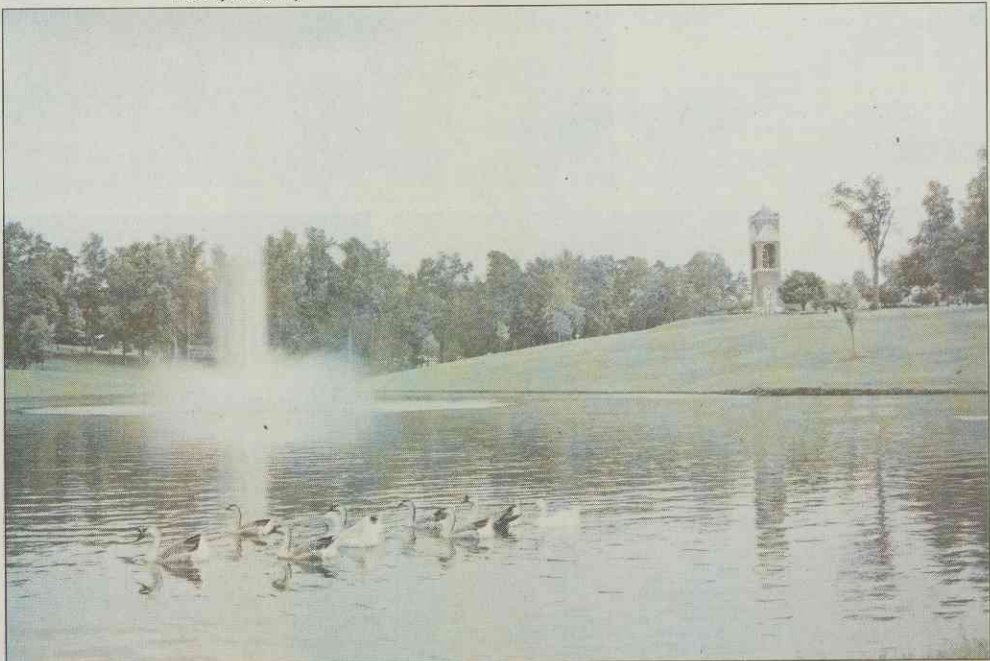


Photo by Katie Bryant