



Heath Rada tries on his costume for his part as "Prince Dauntless" in the upcoming production of "Once Upon A Mattress."

Highland Players Present

'Once Upon A Mattress'

The Highland Players will open their 1963-64 season with a presentation of the delightfully sophisticated musical comedy "Once Upon a Mattress" on the evenings of October 23rd - 26th, in the Liberal Arts Auditorium.

The musical opens with a prologue by the Minstrel (David Johnson) explaining the familiar "Princess and the Pea" fairy tale. He then sets out to narrate the actual story. King Sextimus (Richard McCord) is under the curse of a witch never to speak until "the Mouse devours the Hawk." Queen Agravaing (Sarah Alex Bradbury) has taken over the throne and decreed that "no one shall wed 'til Prince Dauntless (Heath Rada) shares his marriage bed." And the Queen is determined he shall remain single. The Royalty Test has been given to eleven contenders for Dauntless' hand and true to form each has been dismissed on said claim of illegal right to the royal blue.

A prospective bride (Carolyn Clark) is at this time being given the test and has reached the seventh plateau. But alas! alack! Princess No. 12 fails. Thus there is an opening for a princess once again.

In the meanwhile Lady Larken's (Sue Scarborough) lover Sir Harry has found another contender. Her name is Princess Winnifred (Mary Elizabeth Cobb). This princess from "the land of the foggy, foggy dew" is definitely lacking in courtly graces but wins the affection of the court. Although Harry has her papers, the Queen is determined to discredit her and sets about with the Wizard to do so.

A wild Ball--complete with opium and the Spanish Panic is planned. The Royalty Test? It is being prepared.

Other characters involved in the retelling of the legend include Jester, Bill Abrams; Sir Studley, David Pruden; Nightengale of Smaarkand, Barbara Ruff; Prince (in prologue), Paul Grubbs; Princess (in prologue), Carol Gallant; Knights: Larry Bowers, David Porter, Lee Settlementyre, Mark Steil; Ladies-in-Waiting: Sherry Baldwin, Janet Blake, Martha Quate, Dianne Gilmore.

The director is Arthur McDonald, and musical direction is by Franklin West. Gail Carlson is

set designer, with choreography by Lillian Phillips; and costumes by Anne Brong.

Tickets for the 1963-64 Highland Players' season will go on sale Monday, September 30. The balance of the season includes Tennessee Williams' SUMMER AND SMOKE, William Shakespeare's THE TAMING OF THE SHREW and RASHMON (a Japanese play).

Stevens Directs Student Center Cafeteria

Charles Stevens has been given direction of the college's business affairs and auxiliary services on the residence side of the campus. He is in charge of the overall management of the Student Center, and he coordinates the food service as the college's representative to Prophet Food Company.

Mr. Stevens is a retired Army colonel. He served twenty years in the Army. During World War II he was stationed in Europe in the 79th. Infantry Division. He has spent five years in the 82nd. Airborne Division, four years in the United States Special Forces, and two years in the Viet Nam Armed Forces on the combat scene in Viet Nam.



Mr. Stevens has received the Silver Star, the Bronze Star with Cluster, and the Purple Heart. He is married and has two daughters and one son. He hopes to be settled in Laurinburg by the end of the month.

Aims of

St. Andrews

St. Andrews Presbyterian College represents a new venture in Christian higher education. To justify the faith of its founders, St. Andrews must challenge complacency and mediocrity in all of life. It seeks to combine without apology the love of God and the love of learning, the spiritual and the intellectual, and is committed to the pursuit of excellence in its academic, its social and its religious program.

More specifically the objectives of the educational experience provided at St. Andrews are the following:

(1) A disciplined, informed and inquiring mind, marked by the ability to think clearly and to express ideas effectively.

(2) A breadth of intellectual sympathy that includes awareness of the major cultural achievements of Western civilization and of the emerging non-Western countries.

(3) A growing and informed Christian faith that finds expression in genuine commitment to the Church, and in the work to which its graduates are called.

(4) An intelligent concern for Christian and democratic values in personal relations, and in national and international affairs.

(5) A desire for continued intellectual, moral and spiritual growth.

(6) Physical fitness and vitality.

(Reprinted from the St. Andrews 1963-64 Catalogue.)

From The S.A. Office

Intramural football has once again come to the St. Andrews campus. Although competition is only three days old, only one team Green (twice Intramural Champions) remains undefeated.

Co-ed spectators have colorfully enhanced the new bleachers located on both fields. The Intramural Sports Council strongly encourages both upperclassmen and freshmen to participate in one or more of our sports each

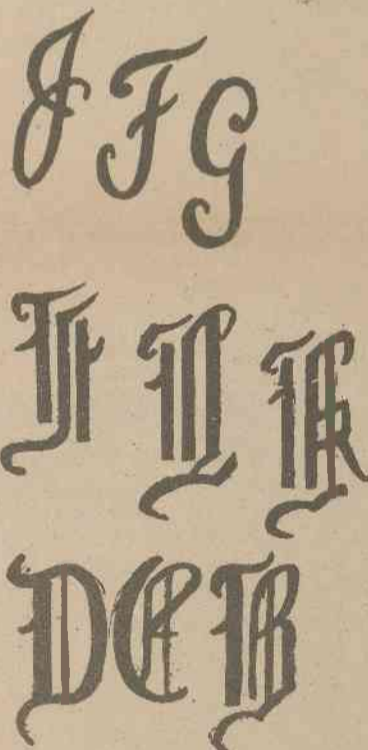
season.

Many erroneously think that Intramural sports are for men only. There are several sports which are offered to girl students. Teams from all women's dorms now being organized for the fall sports seasons.

Our sports program can only be as good as the individuals who play them. If you don't play, you can still be of great value to your team as a spectator.

FREE SWEATER MONOGRAMS

One Week Only —
Sept. 27 — Oct. 5
Have that beautiful sweater monogrammed for that personalized touch. Both boys and girls.



Men's Sweaters
Cardigans and
V-Neck slipovers
Navy, Burgandy, Camel
Green, Grey, Blue,
Charcoal & Brown
10.95 up

NOW

Just in time for Fall clothes, we invite you to use

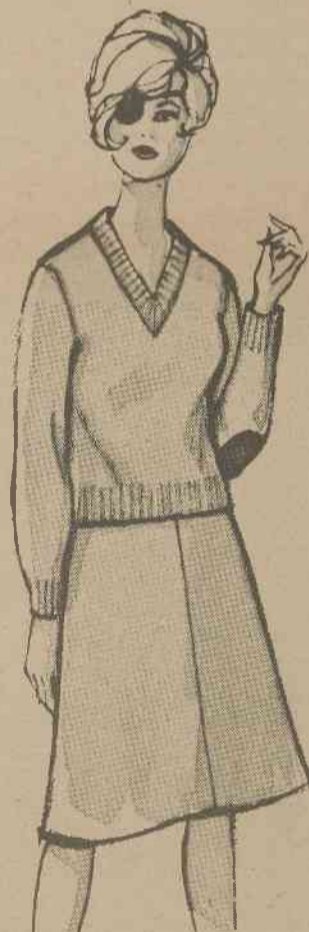
our Extend - A - Charge Account

This is your personal invitation to convenient shopping with our new Extend - A - Charge.

1/3 Oct. — 1/3 Nov. — 1/3 Dec. at your convenience. Drop in the store and we'll be happy to open your charge account.

Barron Mills Inc.

The Highland Shop — 2 doors From State Bank



Beautifully man-tailored V-neck pullover of 75% Shetland- 25% Mohair with real suede elbow patches. Colors: egg shell, navy, burgandy,



Man tailored with V-neck, real suede patches and slit-pockets. 75% Shetland, 25% Mohair. Colors: Egg shell, navy, burgandy, blue, black and lt. grey. Sizes 34-40

blue, black & lt. grey. Sizes 34-40. Popular "A"-line solid wool flannel skirt in colors to match all sweaters. sizes 6-18. \$1.25



\$10.95. Madras Plaid 100% wool seat lined sheath skirt in colors to match all sweaters. Sizes 6-18.